

Public Corridor Suggestions for I75 Connector Study

Project Item Number: 7-249

County and Route: Jessamine and Madison, US27/I-75 Connector Study

Project Description: Feasibility study of construction of US27/I-75 Connector

Project Manager Contact information (Cabinet): Stuart Goodpaster, District 7, 859-246-2355, stuart.goodpaster@ky.gov

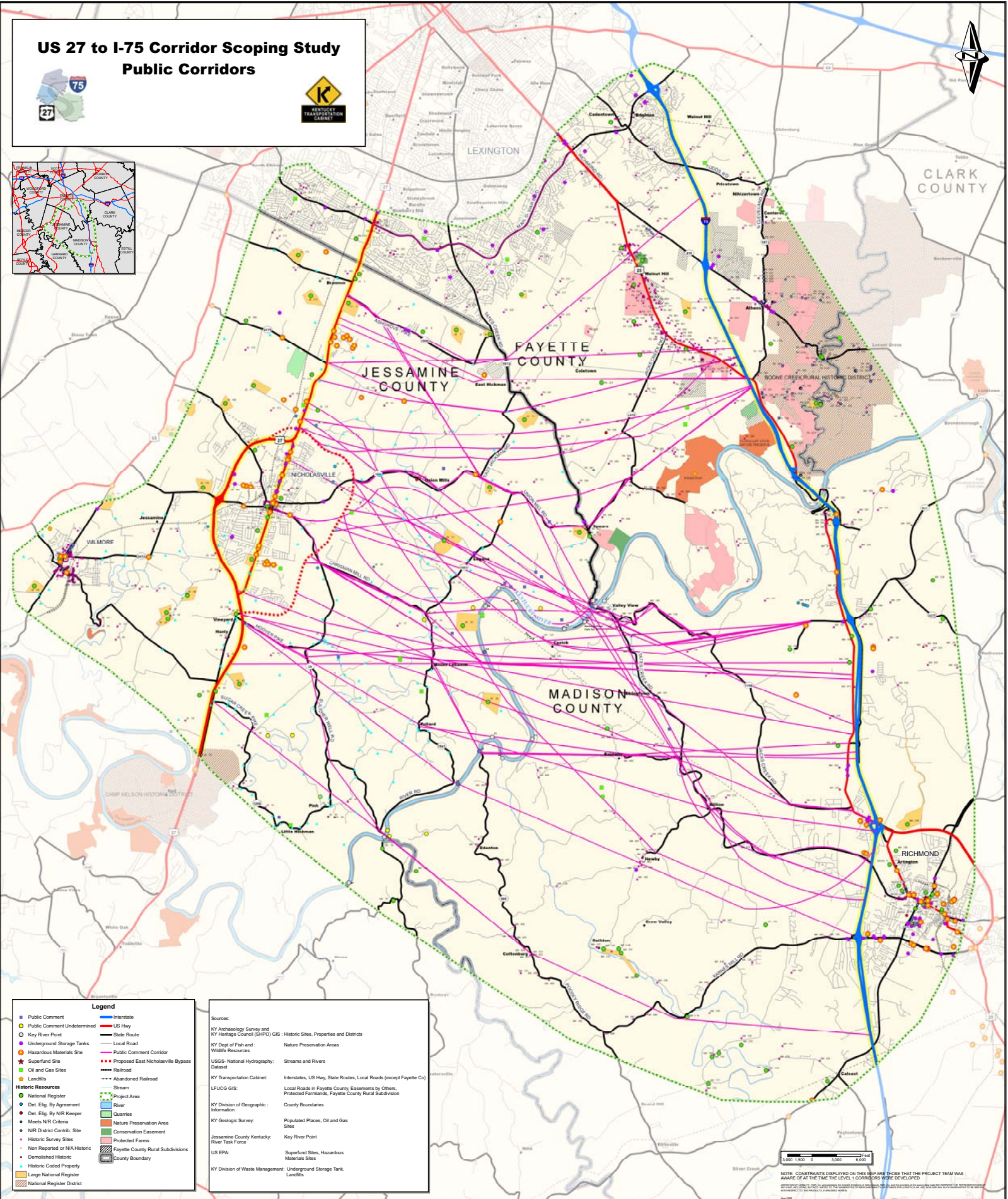
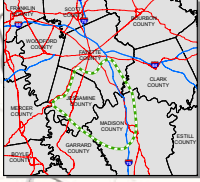
Project Manager Contact Information (Consultant): Shawn Dikes with PB Americas, Inc. (Louisville office) 502-456-2126, dikes@pbworld.com

Other contacts: Randy Turner, KYTC D7, 859-246-2355, Randy.turner@ky.gov

Approximate dates: November 20, 2007

Comments (number of people reached, effectiveness of the technique, what you would do differently, etc.): Poster size aerial photographs were provided at a public meeting in Nicholasville, and people were encouraged to draw their ideas for corridor centerlines directly onto the maps. These centerlines were synthesized into a manageable range of alternative corridors and advanced for further consideration. 244 people attended the meeting.

US 27 to I-75 Corridor Scoping Study Public Corridors



- Legend**
- Public Comment
 - Public Comment Undetermined
 - Key River Point
 - Underground Storage Tanks
 - Hazardous Materials Site
 - Superfund Site
 - Oil and Gas Sites
 - Landfills
 - Historic Resources**
 - National Register
 - Dist. Prop. By Agreement
 - Dist. Prop. By NLR Keeper
 - Meets NLR Criteria
 - NLR District Contrib. Site
 - Historic Survey Sites
 - Non Reported or N/A Historic
 - Demolished Historic
 - Historic Coded Property
 - Large National Register
 - National Register District

- Sources:**
- KY Archaeology Survey and KY Heritage Council (SHPD) GIS: Historic Sites, Properties and Districts
 - KY Dept of Fish and Wildlife Resources: Nature Preservation Areas
 - USGS: National Hydrography: Dataset: Streams and Rivers
 - KY Transportation Cabinet: Interstates, US Hwy, State Routes, Local Roads (except Fayette Co)
 - LUCOG GIS: Local Roads in Fayette County, Easements by Others, Protected Farmlands, Fayette County Rural Subdivision
 - KY Division of Geographic Information: County Boundaries
 - KY Geologic Survey: Populated Places, Oil and Gas Sites
 - Jessamine County Kentucky: River Task Force: Key River Point
 - US EPA: Superfund Sites, Hazardous Materials Sites
 - KY Division of Waste Management: Underground Storage Tank, Landfills

0 1,000 2,000 3,000 4,000

NOTE: CONSTRAINTS DISPLAYED ON THIS MAP ARE THOSE THAT THE PROJECT TEAM WAS AWARE OF AT THE TIME THE LEVEL 1 CORRIDORS WERE DEVELOPED