

A REQUEST FOR PROPOSAL FOR PROFESSIONAL SERVICES CONTRACT

Department of Highways Professional Services Procurement Bulletin 2024-11 Various | 10-188 | Rockfall/Roadslide Study

This document constitutes a Request for Proposals for a Professional Service Contract from qualified individuals and organizations to furnish those services as described herein for the Commonwealth of Kentucky, Department of Highways.

I. PROJECT DESCRIPTION

County -	Various
Route -	Rockfall/Roadslide Study
Item No. -	10-188.00
Project Description -	Planning study to identify and scope potential rockfall and slide areas on various routes in District 10.

II. PROJECT INFORMATION

Project Manager -	Darren Back, P.E.
User Division -	Planning
Approximate Fee -	\$325,000 Scoping Study (Lump Sum)
Project Funding -	Federal Statewide Planning & Research (SPR) Funds

III. PURPOSE AND NEED

Rockfalls and roadslides represent a substantial risk as negative assets to a transportation agency. In addition to their recurring maintenance and other costs to KYTC, these hazards present considerable safety exposure. Additionally, significant user costs to the traveling public exist during long-term closures with lengthy detours. These impacts are exacerbated during natural disaster events. An increased emphasis in federal resiliency projects necessitates proper planning to take advantage of future opportunities, particularly for competitive federal programs.

IV. DBE GOAL

The Consultant team shall include a DBE Participation Plan with their Response to Announcement to help the Department meet the 11.95% DBE goal established by FHWA. The plan should demonstrate how DBE companies will be mentored or used to assist in the area(s) pertaining to this contract. An additional page will be allowed in the Project Approach (Section 7) to exhibit this plan. A maximum of five (5) points will be considered in the Evaluation Factors for the DBE Participation Plan.

V. SCOPE OF WORK

This planning study aims to identify and assess the most problematic rockfall and roadslide areas along District 10 routes. The consultant will collect data using OMS (Operations Management System), engage in discussions with District and Central Office maintenance personnel, utilize the CHAF (Continuous Highway Analysis Framework) database, and explore other resources to compile a comprehensive project database. Subsequently, the consultant will propose improvement concepts for each location, providing estimates and conducting a benefit-cost analysis focused on safety improvements, other user benefits, and life-cycle costs for the top 10-15 priority areas.

The final report will prioritize these areas based on their critical impact on the transportation network. The report will be used to create CHAFs, incorporate projects into critical documentation (including the Resiliency Improvement Plan), and seek future funding (and potential grant funding) to address the most critical rockfall and roadslide areas.

Additional work, particularly relating to federal grant application and administration support may be added by the Department.

None, some, or all identified concepts may be advanced by the Department to future phases including Preliminary Engineering and Environmental Analysis upon completion of the Planning phase, as well as Final Design thereafter. The selected Consultant would then be required to provide engineering services to perform Final Roadway and Structural Design, including the preparation of any design studies, drainage design, right-of-way plans, construction plans, traffic control plans, and cost estimates as well as any other services that KYTC chooses not to perform with in-house forces.

VI. SPECIAL INSTRUCTIONS

The Department may retain any of the advertised services to be performed by in-house state forces.

Instructions for Response to Announcement can be found at:

<https://transportation.ky.gov/ProfessionalServices/Pages/Respond-to-an-Announcement.aspx>

VII. AVAILABLE STUDIES

[D10 Accessibility and Connectivity Study \(2019\)](#)

VIII. METHOD OF DESIGN

The selected Consultant shall utilize the most recent CADD Standards for Highway Plans Policy in the development of the highway plans. Refer to the 2019 CADD Standards for ORD V4 Project Development Memo for information pertaining to the latest CADD Standards and plan submittal.

IX. ENVIRONMENTAL SERVICES

Any necessary Environmental Services are likely to be provided by the Consultant. If needed, an Environmental Overview Report with a red flag summary may be included in the final report.

Environmental services necessary for the completion of Preliminary Engineering or Final Design may be added by contract modification at the appropriate time. At any time, if the Department has the capacity to provide these services, the Department may retain the advertised environmental services. Prequalification in the area of Environmental Services is not required to be identified in the Consultant's Response to Announcement.

X. PHOTOGRAMMETRIC SERVICES

The Consultant will provide mapping and will furnish manuscripts in ORD format. Statewide Elevation data and Aerial photography can be found at the following link [KyFromAbove - Kentucky's Aerial Photography & Elevation Data Program](#). The selected Consultant shall supplement this information with conventional surveying as determined during project scoping.

XI. STRUCTURE DESIGN

Structure Design is not anticipated for the Planning Study. If the Department chooses to advance the project to Final Design and if the selected Consultant is retained for Final Design services, the selected Consultant shall do the necessary engineering services to submit to the KYTC an Advanced Situation Folder(s) for the appropriate structure(s). The selected Consultant may be responsible for any necessary Structure Design services. Structure Design of the proposed structure(s) may be added as a Contract Modification. Prequalification in the area of Structure Design is required to be identified in the Consultant's Response to Announcement.

XII. GEOTECHNICAL SERVICES

The selected Consultant shall provide all Geotechnical Services required for the project. A geotechnical overview is expected to be included in the final report. Geotechnical services necessary for the completion of Preliminary Engineering or Final Design may be added by contract modification at the appropriate time. At any time, if the Department has the capacity to provide these services, the Department may retain the advertised geotechnical services. Prequalification in the area of Geotechnical Services is required to be identified in the Consultant's Response to Announcement.

XIII. TRAFFIC ENGINEERING

The Department will provide all traffic projections and related information. Analysis related to the impacts of detours pertinent to benefit-cost calculations may be required to be conducted by the Consultant.

XIV. UTILITIES

The selected Consultant will identify existing utility facilities within the project area and complete or contribute to a utility conflict matrix, documenting those that may be negatively impacted by the project. The Consultant shall document the following for each utility in the conflict matrix: type of utility, owner of utility, quantify the extent they may be impacted, potential impacts to project budget, potential impact to project schedule, confidence of utility location depicted, and recommendations for remedy.

XV. PREQUALIFICATION REQUIREMENTS

To respond to this project the Consultant must be prequalified in the following areas by the response due date of this advertisement:

GEOTECHNICAL SERVICES

- Geotechnical Engineering

ROADWAY DESIGN

- Rural Roadway Design
- Surveying
- Photogrammetry & Related Services

STRUCTURE DESIGN

- Spans Under 500 Feet

TRANSPORTATION PLANNING

- Transportation Planning Engineering
- Conceptual Transportation Planning
- *Traffic Forecasting** (see note below)

*Environmental Aquatic & Terrestrial Ecosystems Analysis** (see note below)

- *Botany**
- *Terrestrial Zoology**
- *Wetlands**
- *Freshwater Macroinvertebrates**
- *Water Quality**

*Environmental Archaeology & Other Services** (see note below)

- *Prehistoric Archaeology**
- *Socio-Economic Analysis**
- *Historic Archaeology**
- *Environmental Document Writing & Coordination**
- *Cultural-Historic Analysis**
- *Stream & Wetland Mitigation**

*Maintenance / Bridge Maintenance Services** (see note below)

- *In-Depth Structure Inspection**

** Note – These prequalifications are not required with the initial proposal as it is uncertain to the extent practicable if they are necessary. Should these services become necessary during the delivery of the project in this or future phases, the selected Consultant team must obtain the required qualifications before providing those services or bring on a prequalified subconsultant at that time.*

XVI. PROCUREMENT SCHEDULE

Dates other than Response Date are tentative and provided for information only.

- Advertisement Date: May 14, 2024
- Response Date: June 5, 2024 by 4:30 PM ET (Frankfort Time)
- First Selection Meeting: June 10, 2024

- Final Selection: June 26, 2024
- Scoping Conference: July 3, 2024
- Consultant Fee Proposal: July 12, 2024
- Contract Negotiations: July 24, 2024
- Notice to Proceed: August 14, 2024

XVII. PROJECT SCHEDULE

- Identify Potential Sites October 2024
- Develop Improvement Concepts January 2025
- Project Prioritization March 2025
- Draft Report: April 2025
- Final Report: May 2025

XVIII. EVALUATION FACTORS

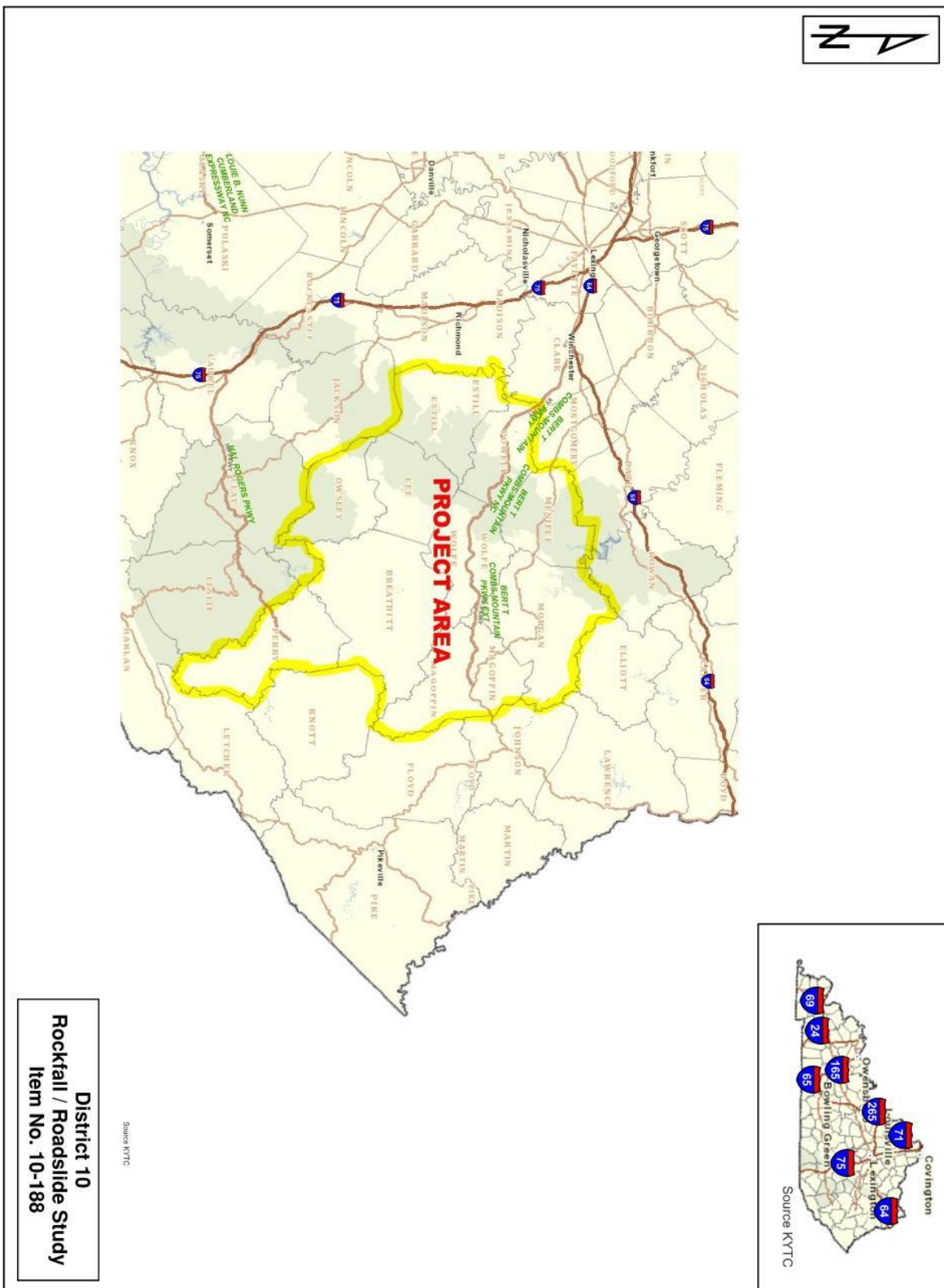
Consultants will be evaluated by the selection committee based on the following weighted factors:

1. Project approach and proposed procedures to accomplish the services for the project. (20 Points)
2. Relative experience of consultant personnel assigned to project team with highway project for KYTC and/or federal, local or other state governmental agencies. (15 Points)
3. Past record of performance on projects similar in type and complexity. (15 Points)
4. Capacity to comply with project schedule. (10 Points)
5. DBE Participation Plan (5 Points)
6. Knowledge of the locality and familiarity of the general geographic area. (2 Points)

XIX. SELECTION COMMITTEE MEMBERS

1. Darren Back, P.E., User Division
2. Nathan Ridgway, P.E., User Division
3. Casey Smith, P.E., Secretary's Pool
4. Amanda Desmond, P.E., Secretary's Pool
5. Cindy Evensen, Governor's Pool

XX. AREA MAP



Disclaimer: KYTC provides this map as a reference only. Users are to validate information independently.
Copyright: 2024 Kentucky Transportation Cabinet. All rights reserved.

Date: 5/2/2024



District 10
Rockfall / Roadside Study
Item No. 10-188