

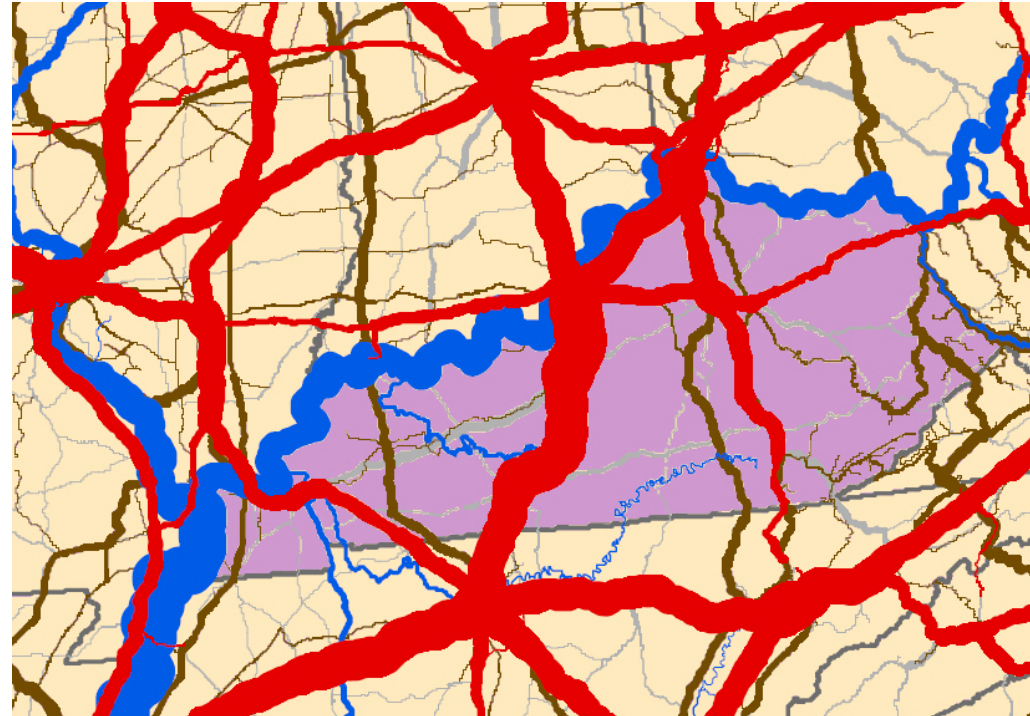
# Kentucky Freight Program

## KYTC Freight

Lynn Soporowski, P.E.  
Branch Manager, Modal Programs  
e [Lynn.Soporowski@ky.gov](mailto:Lynn.Soporowski@ky.gov)  
p 502-782-5083

Casey Wells  
Freight Coordinator  
e [Casey.Wells@ky.gov](mailto:Casey.Wells@ky.gov)  
p 502-782-5095

Carol Brent  
Freight GIS & Annual Reports  
e [Carol.Brent@ky.gov](mailto:Carol.Brent@ky.gov)  
p 502-782-5048



# Kentucky Freight Program

## 2016 Statewide Freight Plan

Chapter 1 - Introduction

Chapter 2 - Kentucky Freight System

Chapter 3 - Goals and Performance Measures

Chapter 4 - Current Conditions

Chapter 5 - Key Industries and Supply Chains

Chapter 6 - Trends and Challenges

Chapter 7 - Freight System Needs

Chapter 8 - Policy and Strategic Recommendations



# FAST ACT Freight Plan Requirements

1. Identification of significant freight system trends, needs, and issues
2. Description of freight policies, strategies, and performance measures guiding transportation investment decisions
3. A listing of critical multimodal urban and rural freight facilities and corridors.
4. How the State will help meet the goals of National Freight Policies and Programs
5. Technologies and operational strategies that improve the safety and efficiency of freight movement
6. Description of improvements that may be required to reduce or impede the deterioration due to heavy vehicles
7. Inventory of freight mobility issues and mitigation strategies
  1. Congestion, delay, bottlenecks, etc.
8. A freight investment plan with a list of priority projects
9. Consultation with the State Freight Advisory Committee

# FAST ACT Freight Plan Requirements

- 1. Identification of significant freight system trends, needs, and issues*
- 2. Description of freight policies, strategies, and performance measures guiding transportation investment decisions*
- 3. A listing of critical multimodal urban and rural freight facilities and corridors.**
- 4. How the State will help meet the goals of National Freight Policies and Programs*
- 5. Technologies and operational strategies that improve the safety and efficiency of freight movement**
- 6. Description of improvements that may be required to reduce or impede the deterioration due to heavy vehicles*
- 7. Inventory of freight mobility issues and mitigation strategies**
  - 1. Congestion, delay, bottlenecks, etc.**
- 8. A freight investment plan with a list of priority projects*
- 9. Consultation with the State Freight Advisory Committee**



# Kentucky National Highway System

With Major Intermodal Facilities

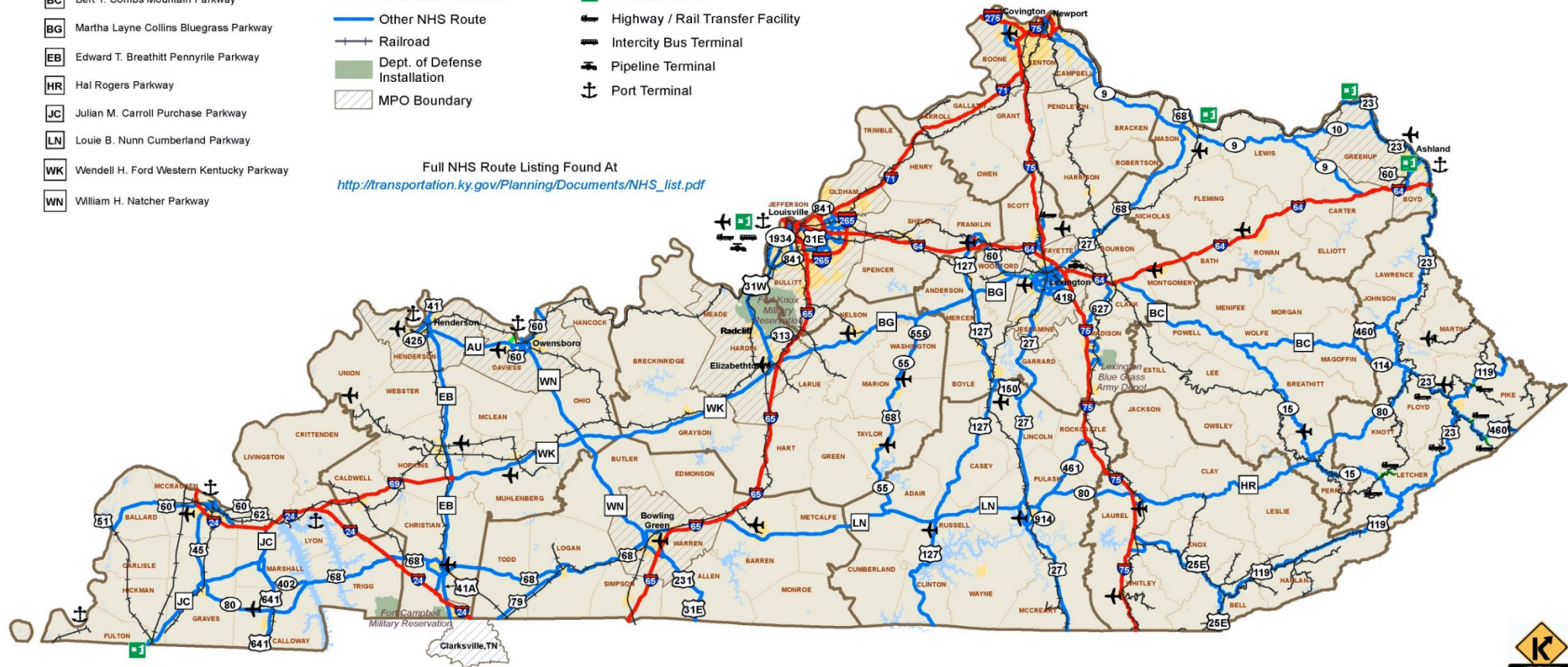


- AU** Audubon Parkway
- BC** Bert T. Combs Mountain Parkway
- BG** Martha Layne Collins Bluegrass Parkway
- EB** Edward T. Breathitt Pennyrile Parkway
- HR** Hal Rogers Parkway
- JC** Julian M. Carroll Purchase Parkway
- LN** Louie B. Nunn Cumberland Parkway
- WK** Wendell H. Ford Western Kentucky Parkway
- WN** William H. Natcher Parkway

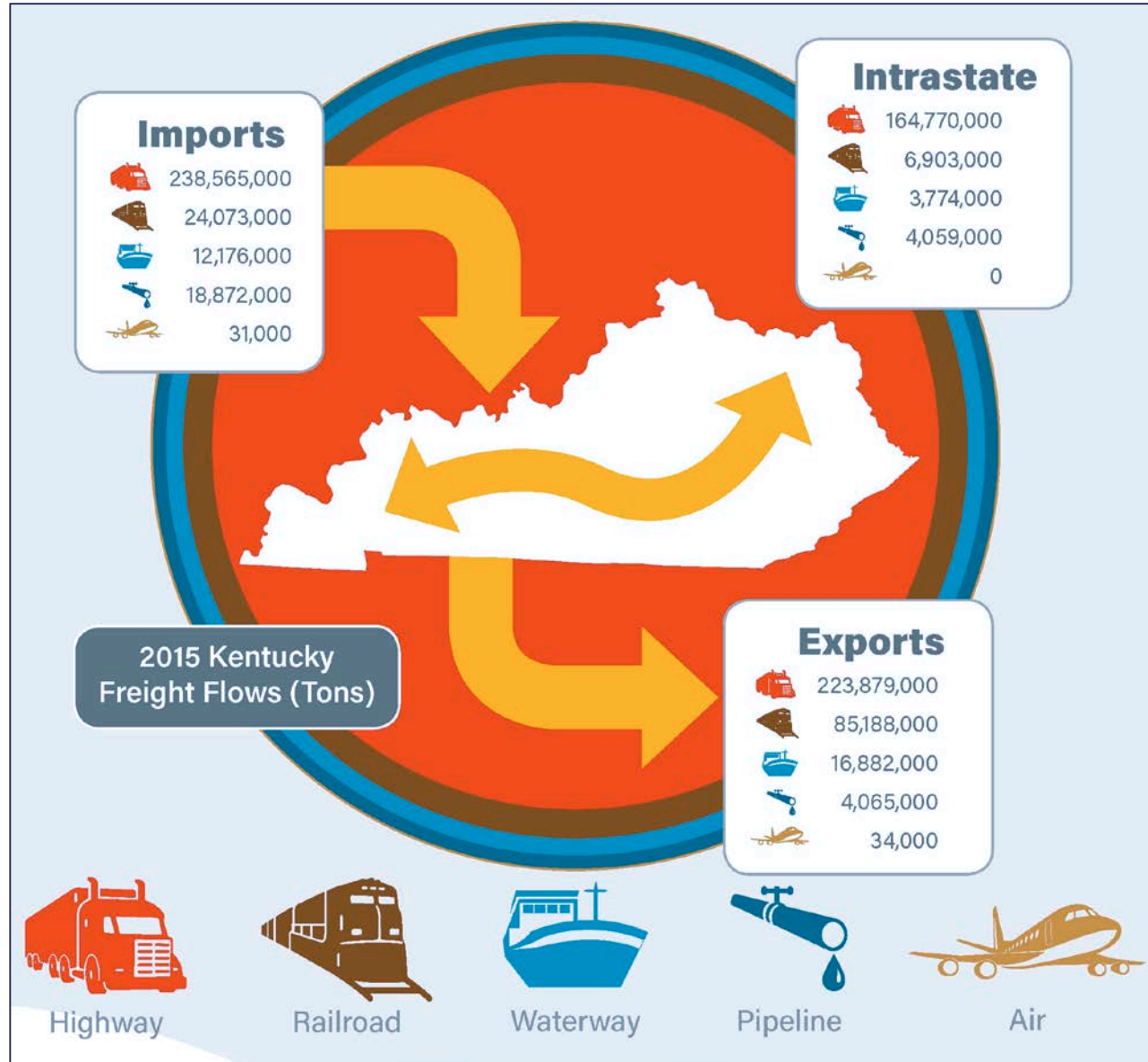
- Interstate System
- Intermodal Connector
- Other NHS Route
- Railroad
- Dept. of Defense Installation
- MPO Boundary

- Airport - Runway > 4,999'
- Amtrak Station
- Highway / Rail Transfer Facility
- Intercity Bus Terminal
- Pipeline Terminal
- Port Terminal

Full NHS Route Listing Found At  
[http://transportation.ky.gov/Planning/Documents/NHS\\_list.pdf](http://transportation.ky.gov/Planning/Documents/NHS_list.pdf)



# Kentucky Freight Program



# Kentucky Freight Program



KYTC owns and maintains nearly 28,000 miles of the Kentucky roadway system.



Kentucky has over 2,900 miles of railroads, consisting of five Class I railroads, one Class II railroad, and 13 Class III railroads.



Kentucky has the 9th best roads in the country, with 90.3% of all federal-aid highway miles in excellent or good condition.



Kentucky is located within 600 miles of over 60% of the nation's population, personal income, and manufacturing.



Kentucky is home to two major air cargo hubs operated by integrated express carriers DHL and UPS.



Kentucky is a major player in the auto industry, with four assembly plants.



The state contains over 1,980 navigable inland waterway miles.

# Kentucky Freight Advisory Committee for Transportation

## KFACT Framework

<b>Seat #</b>	<b>Sector</b>	<b>Mode</b>	<b>Name</b>	<b>Representing</b>
1	Highway	Highway	Asa James Swan	KYTC
2	Trucking	Highway	Guy Young	KY Trucking Association
3	Local Gov	Varies	Lori Kelsey	Louisville MPO (KIPDA)
4	Logistics	Varies	Kim Menke	Toyota Georgetown
5	Industry	Varies	Greg Higdon	KY Association of Manufacturers
6	Rail	Rail	Tom Garrett	Paducah and Louisville Railroad
7	Riverport	Water	Greg Curlin	Hickman Riverport
8*	Airport	Air	Jeff Wafford	UPS
	Pipeline	Pipe	Rick Bender	KY Dept of Energy
9*	Energy	Varies	Rick Bender	KY Dept of Energy
	Agriculture	Varies	John McCauley	KY Department of Agriculture



# Kentucky Freight Advisory Committee for Transportation

## KFACT Goals

The KFACT will provide KYTC and committee members with a venue to directly and efficiently exchange information regarding matters related to freight transportation.

- Document freight assets and concerns
  - *Strengths and weaknesses*
- Identify trends and future needs
  - *Help KYTC plan ahead*
- Recommend strategic initiatives
  - *Help improve policy*

# Kentucky Freight Advisory Committee for Transportation

## KFACT Duties

- KYTC compliance with Freight Planning requirements of FAST Act
- Review/Update KY portion of the National Truck Network
- Review National Multimodal Freight Network
- Communicate regional priorities to KYTC
- OS/OW Regs - Regional coordination

# Kentucky Freight Advisory Committee for Transportation

## KFACT Duties

- Gap analysis
  - Safety and Congestion
    - Truck crash locations
    - Access to Riverports and Airports
    - Access to and around Railyards

Rollovers by Year and Severity			
Year	Fatal	Non-Fatal	Total Rollovers
2001	12	41	53
2002	13	48	61
2003	16	60	76
2004	21	73	94
2005	21	69	90
2006	15	80	95
2007	17	71	88
2008	16	66	82
2009	13	53	66
All Years	144	561	705



# Kentucky Freight Advisory Committee for Transportation

## KFACT Duties

- Gap analysis
  - Truck Parking
    - Locations - Public and Private
  - ITS Solutions

