

# NORTHERN KENTUCKY PORT AUTHORITY



Northern Kentucky Port Authority  
 300 Buttermilk Pike, Suite 332  
 Fort Mitchell, KY 41071  
 859-344-0040  
[www.northernkentuckyusa.com](http://www.northernkentuckyusa.com)

## KEY FEATURES:

- Northern Kentucky Port Authority includes Boone, Campbell, and Kenton County in Northern Kentucky
- River mileage along Boone, Campbell, and Kenton County is 72 miles
- Annual regional freight movement: \$36.6 million tons

## REGIONAL COMMODITY GROWTH FORECAST:

- 1) Broken stone/riprap
- 2) Mixed consumer products
- 3) Iron or steel
- 4) Grain
- 5) Waste or scrap
- 6) Industrial chemicals



### WATERWAY:

Ohio River (River Mile 444 to River Mile 516), Licking River



### RAILROAD:

CSX Railroad  
 NS (Norfolk Southern)



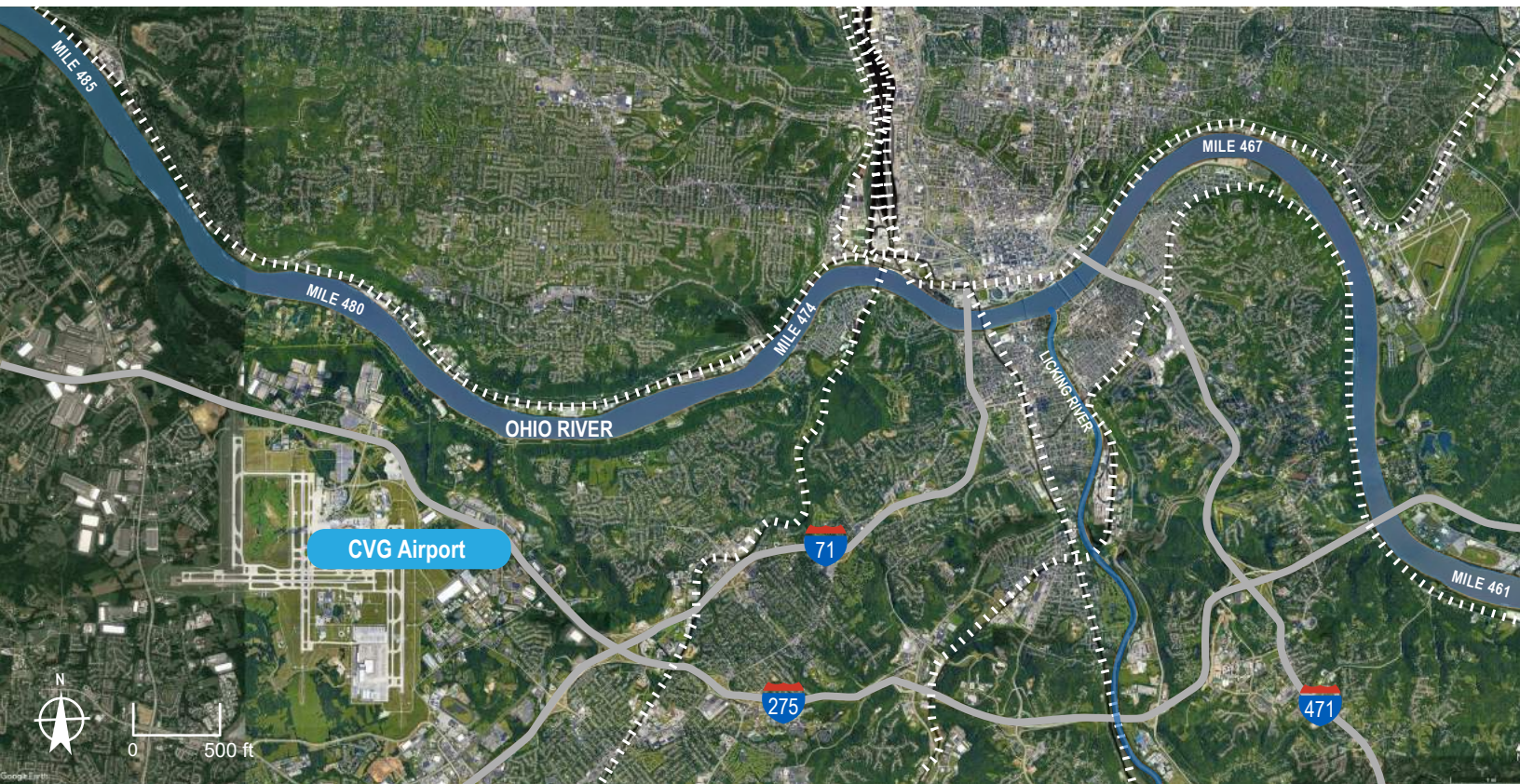
### ROADWAY:

Access to I-71, I-75, I-471,  
 and I-275



### AVIATION:

CVG is North America's seventh largest cargo airport; 13.75 miles from the port



..... ) Rail



## FUTURE INFRASTRUCTURE INVESTMENT

Regional Economic Study to Identify Port Projects

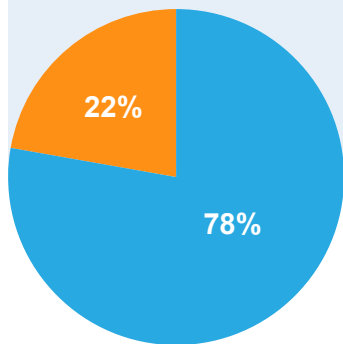
Kentucky 8 Highway Improvements



Licking River Development - Phase I

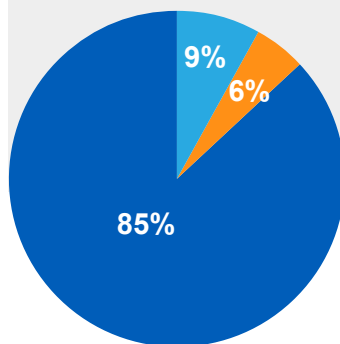
### BARGE CARGO:

Petroleum products, construction materials, agricultural commodities, iron and steel, and metal scrap



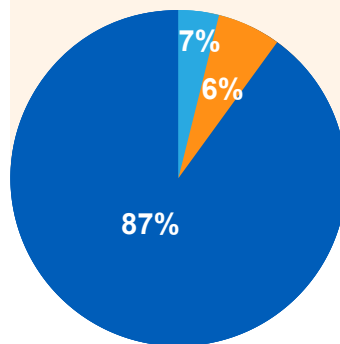
### RAIL CARGO:

Construction materials, coal, consumer goods, grain, agricultural commodities, iron and steel, chemicals, and motor vehicles



### TRUCK CARGO:

Construction materials, agricultural commodities, consumer products, petroleum products, and beverages



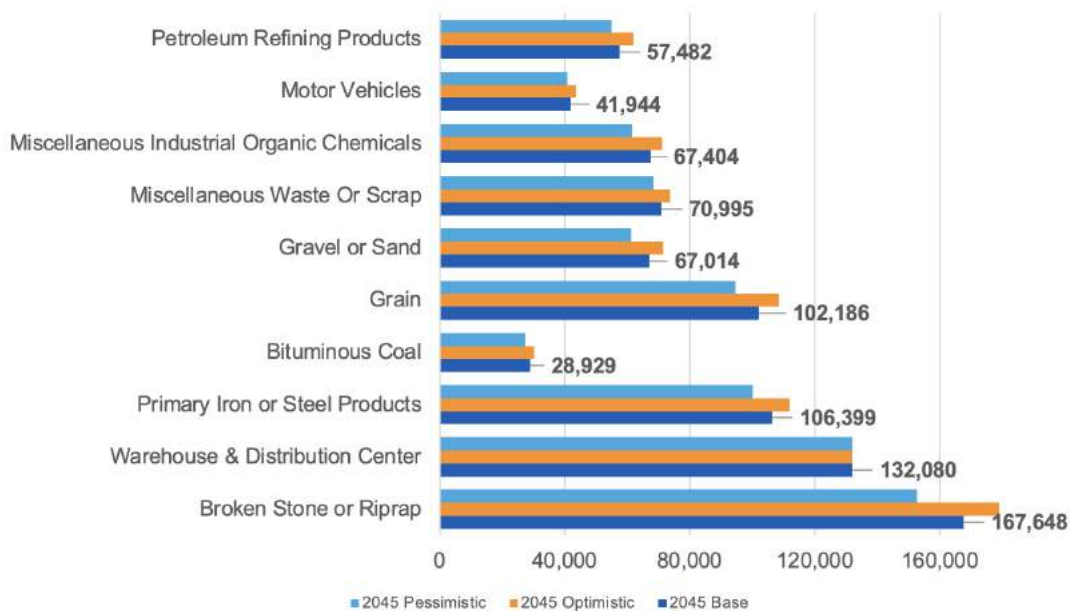
CARGO MOVEMENTS BY MODE, 2018 HINTERLAND = INBOUND | OUTBOUND | THROUGH

## PORT FACILITY INFRASTRUCTURE

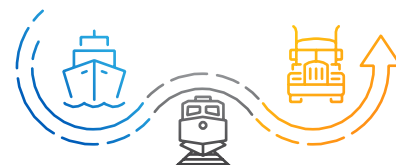
### Existing Waterside

**Conditions:** 68 docks and terminals on the Ohio side, 54 docks and terminals on the Kentucky side and seven docks and terminals on the Licking River

### Top Regional Commodities: Forecast Scenarios (Tons)



Based on 2018 Transearch Data



KENTUCKY RIVERPORTS, HIGHWAY & RAIL FREIGHT NETWORK