

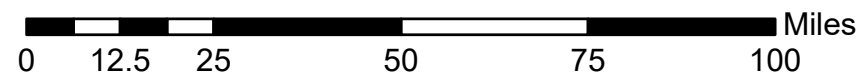
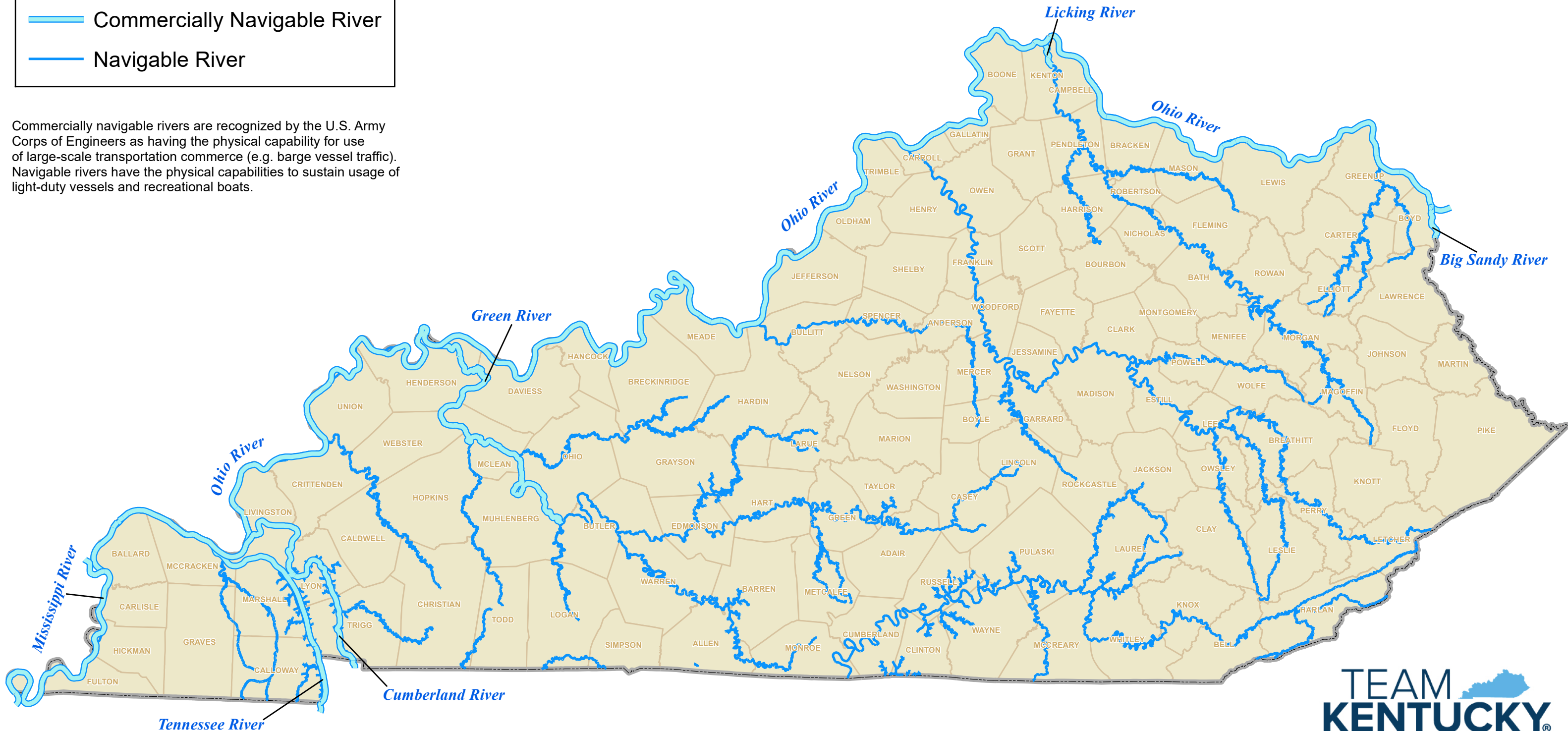
KENTUCKY NAVIGABLE WATERWAYS



As recognized by the U.S. Army Corps of Engineers

— Commercially Navigable River
— Navigable River

Commercially navigable rivers are recognized by the U.S. Army Corps of Engineers as having the physical capability for use of large-scale transportation commerce (e.g. barge vessel traffic). Navigable rivers have the physical capabilities to sustain usage of light-duty vessels and recreational boats.



Map Updated: 2022

