

# MAYSVILLE- MASON COUNTY RIVERPORT AUTHORITY



Riverport in Development  
219 Stanley Reed Court Street  
Maysville, KY 41056  
606-654-2510  
[www.cityofmaysville.com/  
industrial-development](http://www.cityofmaysville.com/industrial-development)

## KEY FEATURES:

- Recommended site: Charleston Bottom area, just north of the US 68 William Harsha Ohio River bridge
- Easy rail and highway access with two bridges
- 140 acres to accommodate a 150-car rail track turnaround
- Facilities would be located on a high flood plain with low flood water impacts
- Deep waterway bank access for mooring opportunities

## REGIONAL COMMODITY GROWTH FORECAST:

- 1) Broken stone/riprap
- 2) Mixed consumer products
- 3) Grain
- 4) Iron or steel products
- 5) Industrial chemicals
- 6) Waste and scrap



**WATERWAY:**  
Ohio River mile 406-413  
Meldahl Pool



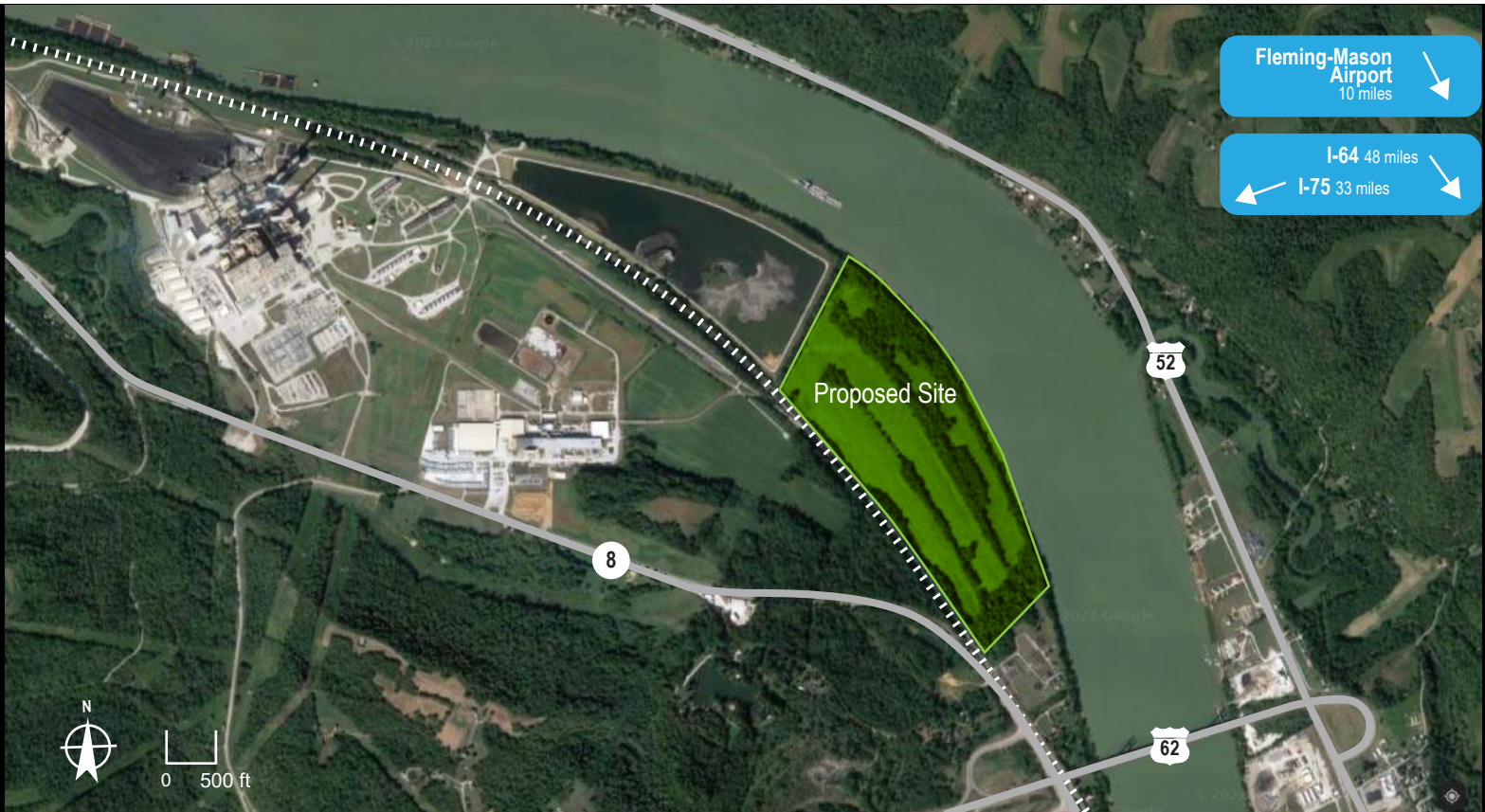
**RAILROAD:**  
Class I – CSX and Class III  
– Transkentucky  
Transportation coal line



**ROADWAY:**  
North of US 68 and near  
US 62 with connections  
to I-75 and I-64



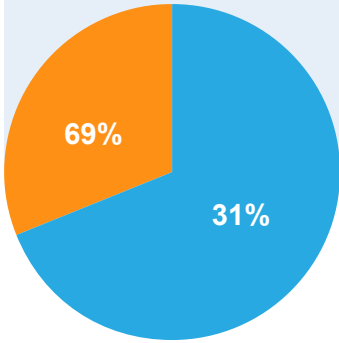
**AVIATION:**  
Fleming-Mason Airport  
is 10 miles south





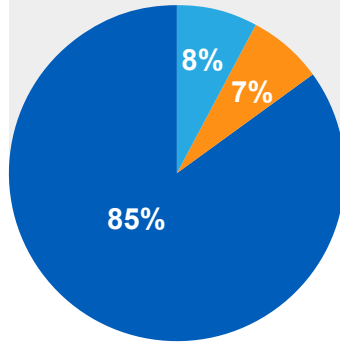
**BARGE CARGO:**

Coal, agricultural commodities, petroleum products, chemicals, construction materials, and fertilizers



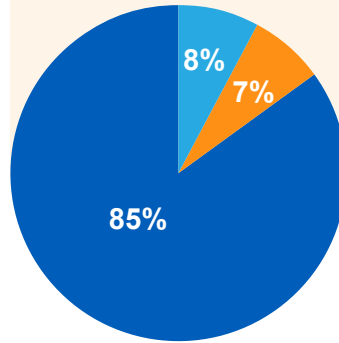
**RAIL CARGO:**

Coal, grain, agricultural commodities, fertilizer, consumer goods, iron and steel, construction materials, and petroleum products



**TRUCK CARGO:**

Agricultural commodities, construction materials, coal, food products, chemicals, and consumer goods



**FUTURE INFRASTRUCTURE INVESTMENT**

**FY 25/26**  
1000 acres near Dover  
**\$4,000,000**

**FY 25/26**  
350 acres for International Paper Plant  
**\$1,000,000**

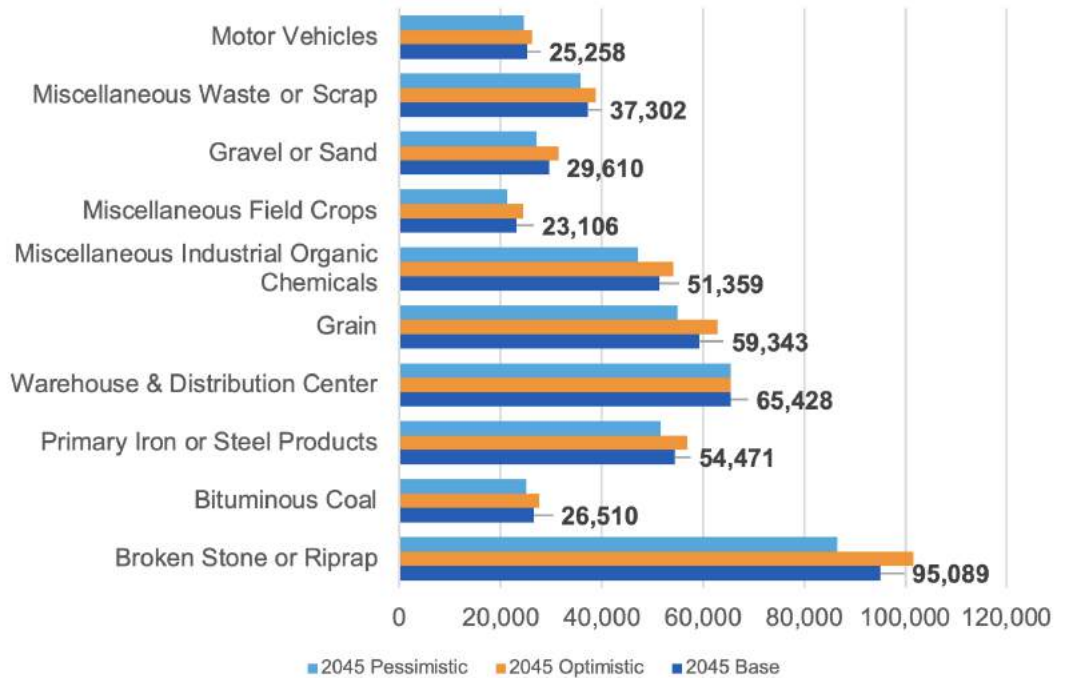


CARGO MOVEMENTS BY MODE, 2018 HINTERLAND = **INBOUND** | **OUTBOUND** | **THROUGH**

**PORT FACILITY INFRASTRUCTURE**

**Regional Workforce:** As of 2019, the population of Maysville was 8,782 with 3,274 people employed. The median household income is \$35,102.

**Top Regional Commodities: Forecast Scenarios (Tons)**



Based on 2018 Transearch Data



KENTUCKY RIVERPORTS, HIGHWAY & RAIL FREIGHT NETWORK