



Kentucky Transportation Cabinet Truck Parking Workshop

Truck Parking Challenges and Effective Practices: Ohio-Kentucky-Indiana Regional Council of Governments

July 27, 2022





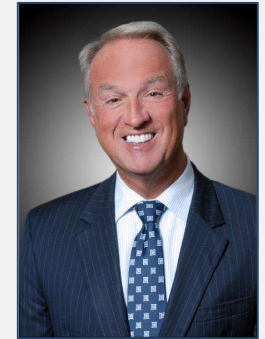
BOONE COUNTY

TRANSPORTATION PLAN

3 Truck Parking RECOMMENDATIONS:

- Freight Roundtable to Address Truck Parking
- County Zoning and Subdivision Regulation Update: Truck Parking Policy
- I-71 and I-75 Expanded Truck Parking

Boone County Truck Parking Task Force



First Mtg – July 2, 2019

Boone County

- Fiscal Court/Administration
- Public Works/Transportation
- Planning & Zoning Commission
- Sherriff Department

City of Florence

- Mayor
- Public Works/Transportation
- Economic Development

Kentucky Dept. of Transportation

Verst Logistics

Amazon

Radial

Northern Kentucky Chamber

OKI

Second Mtg – August 15, 2019

Previous Attendees PLUS...

CVG Airport

Truck Drivers

FHWA – on conference call w/ the group

- Resource Center (Nick and Tom)
- Kentucky Division Office
- Ohio Division Office
- Indiana Division Office
- Kentucky Transportation Cabinet-Central Office – Division of Planning



SAVE THE DATE!

DEVELOPING TRUCK PARKING SOLUTIONS

A Workshop for Identifying and Addressing Truck Parking Needs

Date: Tuesday, October 22, 2019

Time: 9 a.m. – 4 p.m.

Location: SETEC, 3861 Olympic Blvd, Erlanger, KY 41018

The Boone County Fiscal Court and the Ohio-Kentucky-Indiana Regional Council of Governments (OKI) are both increasingly concerned about the growing shortage of truck parking that could adversely affect the region's economic health, road safety and the community's quality of life.

Challenges with truck parking are likely to grow due to the considerable amount of development that is occurring and under consideration for the I-71/75 Brent Spence Bridge Corridor and the surrounding areas near Cincinnati/Northern Kentucky International Airport (CVG).



This Workshop will draw public and private sector truck parking stakeholders together to collectively draw an accurate picture of the truck parking situation and share concepts and approaches to form an action plan that addresses the problem.

Workshop topics include:

- Truck Parking Situation across the US and in the OKI Region with a focus on Boone County
- Current Truck Parking Assessments and Needs
- Best Practices and Possible Solutions
- Implementation Considerations for Truck Parking Solutions
- Breakout Working Groups
- Development of Truck Parking Actions, Strategies and Priorities

For questions concerning this event, please contact:



Primary Host Agency Contact:
Chris Courtney
ccourtney@boonecountky.org
859-446-1171

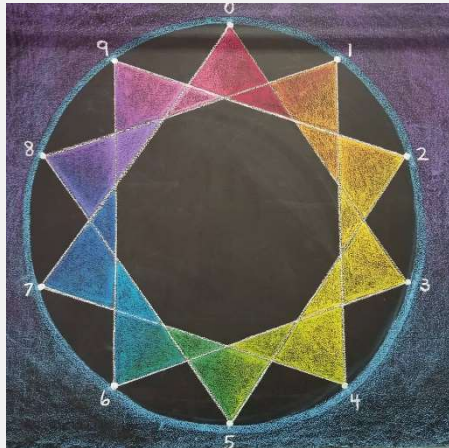


Collaborating Agency/MPO Contact:
Robyn Bancroft, AICP
rbancroft@oki.org
513-619-7662

www.oki.org



RESULT: 10-Point Truck Parking Action Plan



SOLUTIONS	Leading/ Responsible Partner	Timing	Solution Type	Funding Sources	Risks
7) Expand Existing Public Right-of-Way Truck Parking <ul style="list-style-type: none"> a) Consider truck parking needs/opportunities as every new surface transportation improvement project is designed b) Repurpose unused public property with access to interstate (i.e.: weigh stations, rest areas) c) Utilize adjacent greenspace to expand the number of truck parking spaces (I-75 Rest Areas) d) Create truck turnout areas along interstate (outside of metropolitan area) (i.e.: I-25, I-80 and I-90 in Wyoming) 	Nikki Hill/Dane Blackburn, KYTC D6	a) Immediate b-d) Intermediate/Long Term	b) Policy b-d) Capital	a) No additional funding necessary b-d) funding to be identified	Staff education needed to know exactly "what" (# of spaces, staging needs, etc.) to consider <u>Mitigation of risk:</u> look to local and national examples
8) On-Time Dock Windows <ul style="list-style-type: none"> • Have conversations with businesses to identify potential operational improvements/efficiencies • work w/ companies on their timing policies/internal operations to have docks ready for drivers to minimize the need for temporary truck parking • have businesses consider off-peak scheduling 	Angie Mulberry, TriED	Short to Medium	Policy	No additional funding necessary	Businesses objecting
9) Retrofit Existing Industrial Parks <ul style="list-style-type: none"> • Use existing open land for new, shared truck parking/staging lots • Use as a value-added amenity to park tenants • Encourage/assist tenants to expand truck parking/staging where possible • Get creative and think comprehensively vs tenant-by-tenant, parcel-by-parcel • Contract with private truck stop (i.e.: Loves "Tier 3" Truck Stop 	Kevin Costello, Boone County Planning & Zoning	Short, Intermediate, Long phases to this	Capital	Private investment, added cost to tenants, public dollars	Liability of having trucks on property. Businesses, developers don't view as their problem to solve <u>Mitigation of risk:</u> show incentive and need (Truck Parking Marketing Plan)

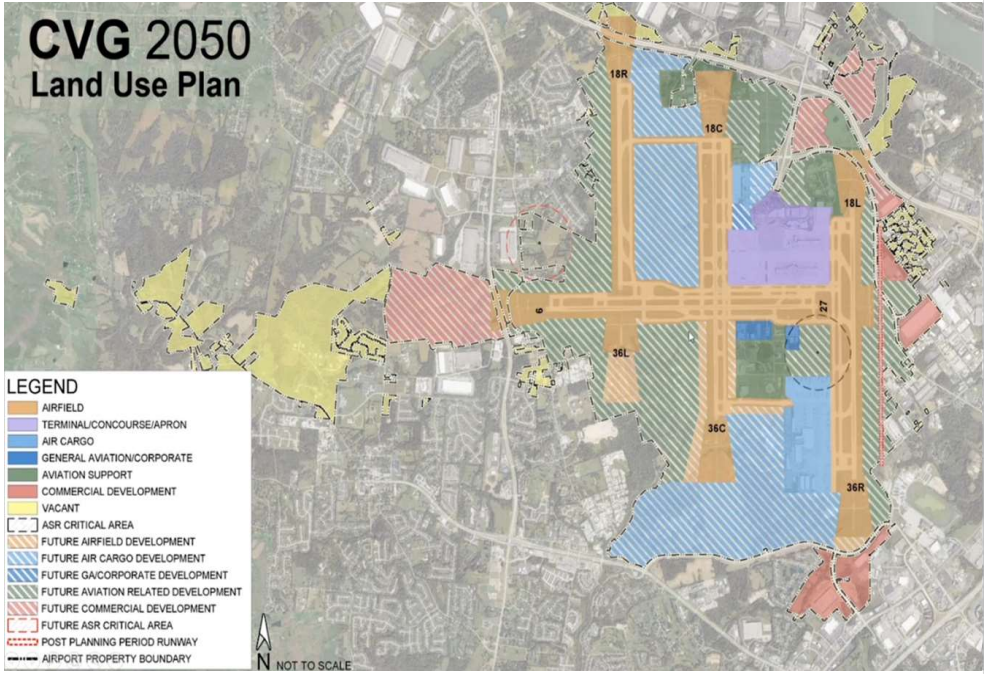
SOLUTIONS	Leading/ Responsible Partner	Timing	Solution Type	Funding Sources	Risks
1) Amend Zoning Ordinance <ul style="list-style-type: none"> a) Require minimum truck parking space requirement, minimum staging capacity in all new commercial and industrial developments/parks b) Create Logistics Zoning Code to require specialized building requirements c) Consider a temporary use of existing commercial/retail parking lots during off business hours/days for truck parking during peak season (Oct-Feb) 	Kevin Costello, Boone County Planning & Zoning	Immediate	Policy	No additional funding necessary	Developer pushback/objections, land availability, politics. Are there needs beyond parking to consider? (Bathrooms, food, showers, etc.) <u>Mitigation of Risk:</u> prevents many problems by being proactive – development of a "Truck Parking Marketing Plan" to speak to the benefits of being proactive and ensuring sustainable economic growth could help this zoning transition. Create Developer incentives
2) Create a Truck Parking "Marketing Plan" <ul style="list-style-type: none"> • PR multi-media plan to promote what's viable/beneficial to land owner/developer "there is money to be made and demand exists." • Emphasize impact on safety (Lt. Noel stats) and truck volume/growth • Messaging to public citizens "truck drivers are your neighbors...deliver your Holiday gifts" 	Kristin Baldwin, Northern Kentucky Chamber	Immediate	Policy	Utilize existing staff time and resources	Printed media would have cost <u>Mitigation of risk:</u> concentrate on Social Media, online/website, pro-bono/public service TV/radio announcements and other low/no cost media options to spread the "Marketing Plan"
3) Engage Neighboring Counties <ul style="list-style-type: none"> • Share this Truck Parking Action Plan with neighboring counties (Grant, Dearborn, etc.) and discuss needs/opportunities 	Jeff Earlywine, Boone County Fiscal Court	Immediate	Policy	Public and/or Private investment	Losing business to other communities
4) Enforcement <ul style="list-style-type: none"> • Boone County Sheriff issue citations to illegally-parked truck drivers – especially as parking options are more available 	Boone County Sheriff	Ongoing	Policy	Use of existing department resources as available	
5) Kentucky Speedway's "Toyota Parking Lot" <ul style="list-style-type: none"> • 60 acre, gravel lot, gated with two entrances • Used only once/twice a year • Potential revenue opportunity for Speedway to provide overnight truck parking 	Mark Simendinger, Kentucky Speedway General Manager	Short Term	Capital	P3s, Federal funding – incentivize owners w/ potential parking revenue	Safety, securing, liability, cost for necessary infrastructure improvements (fencing, asphalt, lighting, etc.) Florence does not want to encourage more trucks access <u>Mitigation of risk:</u> eliminate non-feasible sites – focus on 1 or 2 with greatest feasibility
6) Include truck parking in Large Logistic Negotiations <ul style="list-style-type: none"> • When making a large deal w/ logistics companies, make sure to have truck parking as part of the plan 	Jeff Earlywine, Boone County Fiscal Court, and TriED	Immediate	Policy	EDC provide \$ or incentives	Loss of business to other states <u>Mitigation of risk:</u> use of a "Truck Parking Marketing Plan"

November 13, 2019





Our
Boone
 County
 PLAN 2040





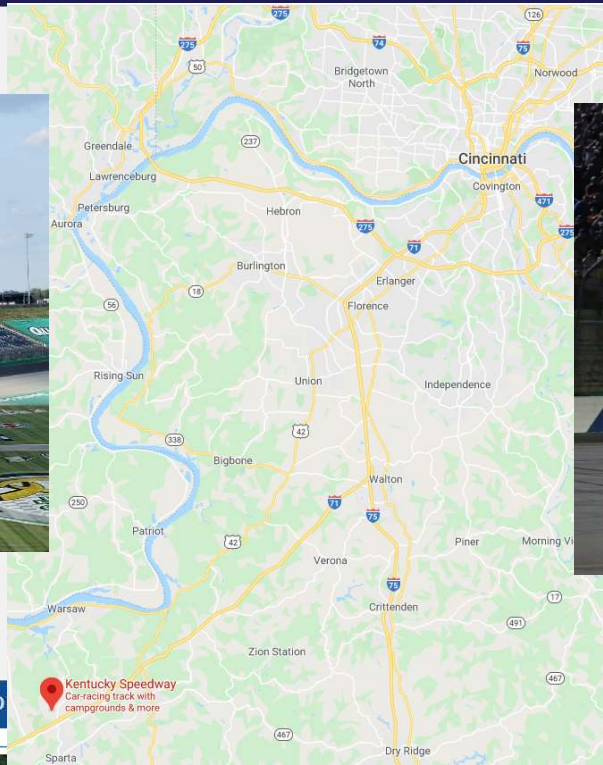
OKI | Map icons made by [Freepik](#) and [Google](#) from [www.flaticon.com](#) are licensed by [CC 3.0 BY](#) | OKI Regional





OKI | Map icons made by [Freepik](#) and [Google](#) from [www.flaticon.com](#) are licensed by [CC 3.0 BY](#) | OKI Regional Council of...







FIND BUILDINGS FIND

OD PROPERTIES HELP

SEARCH LAYERS

Find:

 Buildings  Sites  Businesses  Communities

Square Feet

MIN SIZE - MAX SIZE

For Sale For Lease

Select Type

Office Industrial Special

MORE FILTERS SEARCH

Clear Form Minimize

Map Terrain Hybrid

DEARBORN

INDIANA

ECONOMIC DEVELOPMENT

MAP TOOLS:  Pinpoint  By location  Measure  Polygon  Radius  Export Map

Google

Imagery ©2020, IndianaMap Framework Data, Maxar Technologies, U.S. Geological Survey, USDA Farm Service Agency | Terms of Use | Report a map error

Airpark West Industrial Park: Langley Drive/Wright Blvd



2017



2022

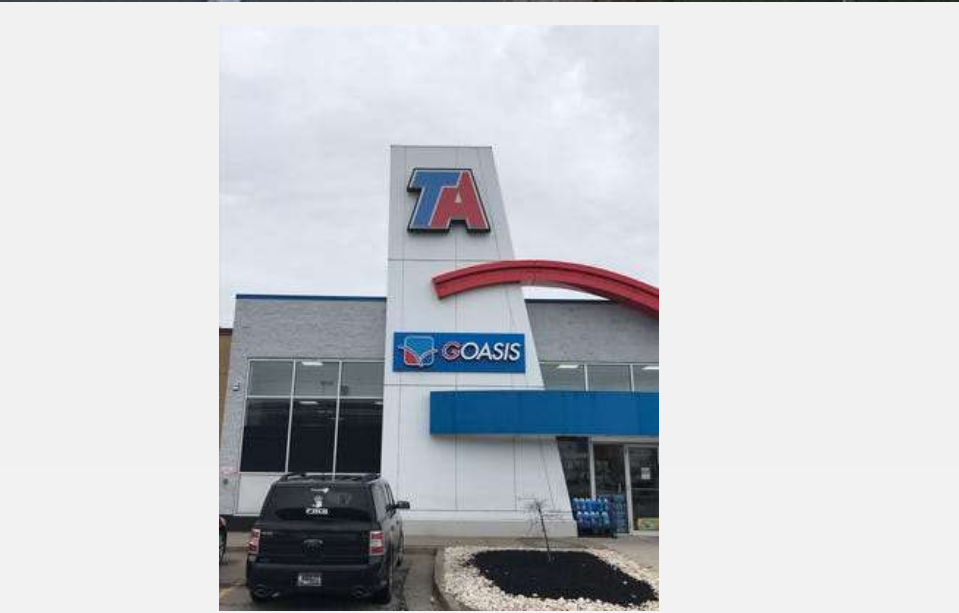
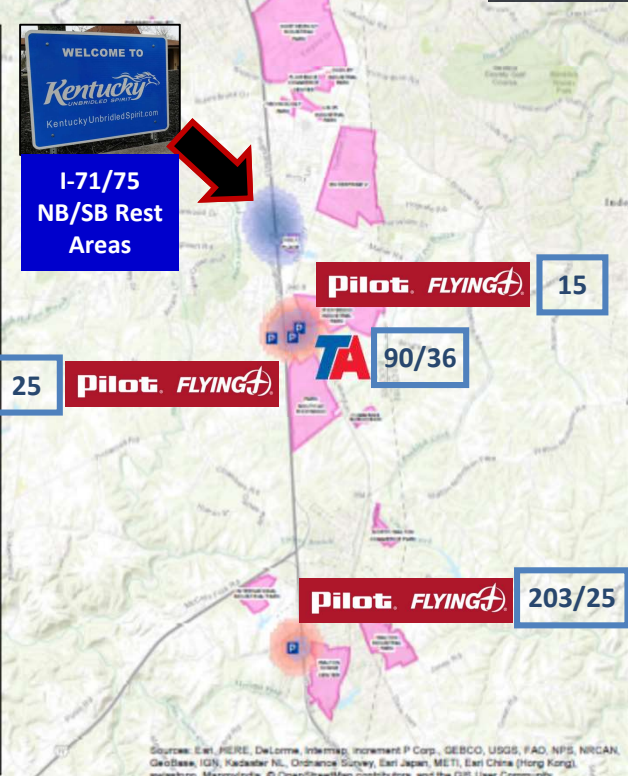
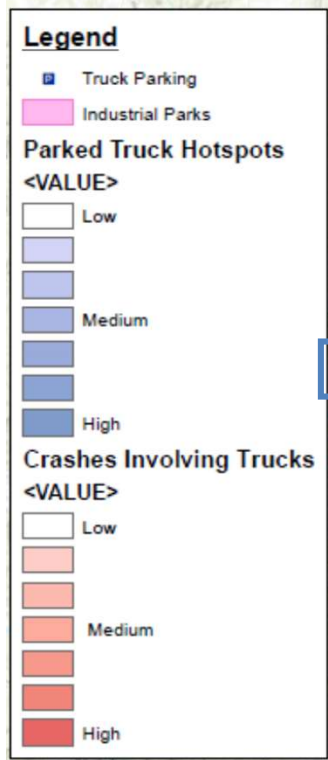


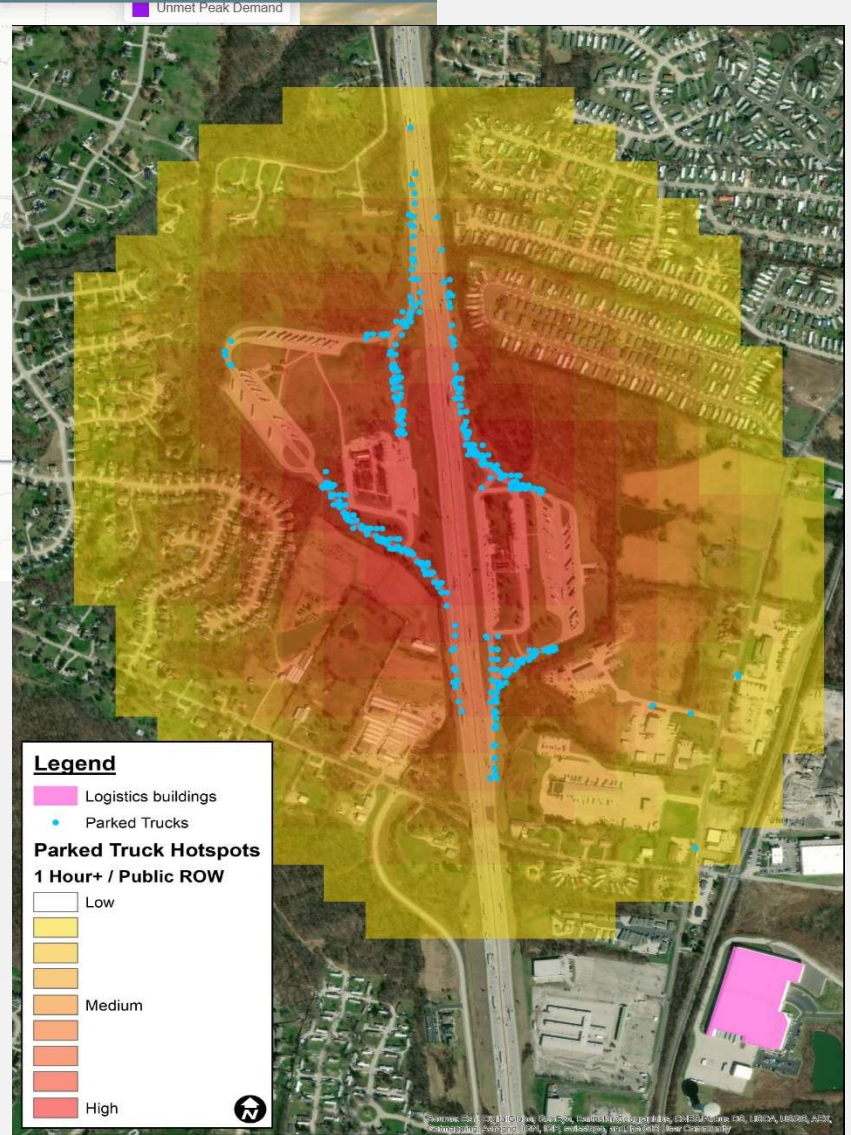
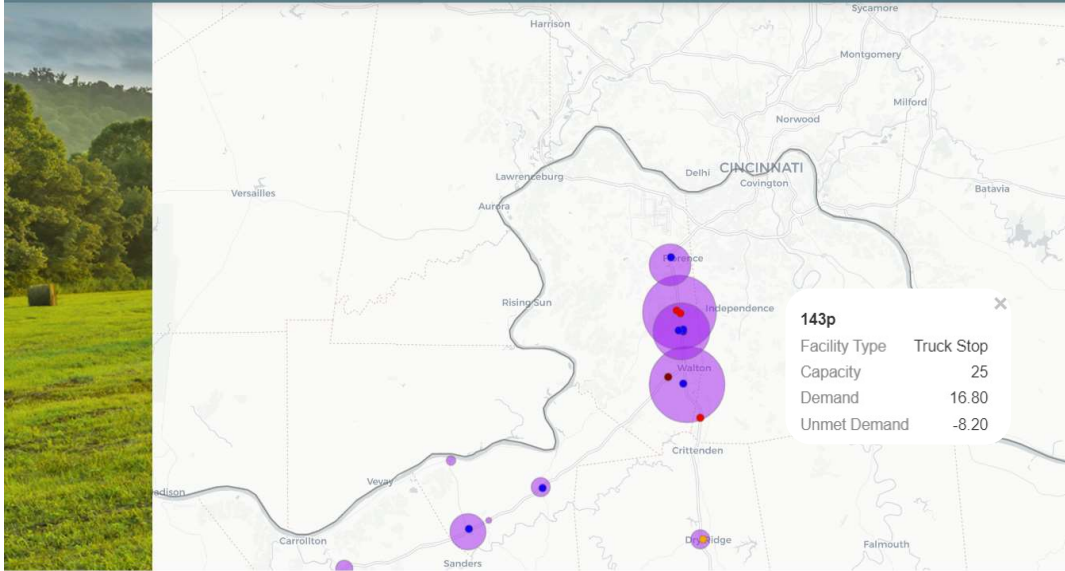
www.oki.org

 /okiregional

 /okircog







Boone	I-75	From MP 176.500 To 177.200	On NHS	Description:	PLANNING STUDY TO EXPAND NORTHBOUND AND SOUTHBOUND REST AREAS ON I-71/I-75 IN BOONE COUNTY (2022CCN)				
				Type of Work:	PLANNING-OKI(O)				
Item#:	6-80257.00	Parent#:	6-80257.00	Length					
Plan Year:	2022	Parent Year:	2022	0.700					
FUND	PH	2022	2023	2024	2025	2026	2027	2028	Phase Total
SPP	P	\$0	\$1,100,000	\$0	\$0	\$0	\$0	\$0	\$1,100,000
		\$0	\$1,100,000	\$0	\$0	\$0	\$0	\$0	\$1,100,000



Planning Factors for all Projects

Points

Air Quality Cost Effectiveness: Will the project contribute to improved air quality?

Yes

Please select the element of the project that will contribute to improved air quality:

Idle Reduction (Diesel Trucks)

5

Please explain:

Truck parking will reduce the need for trucks to idle on County roads waiting for parking or docking.

Please Explain:

The project will remove trucks parking on County Streets and improves safety on those streets.

What is the status of the project?

No plans completed

What is the impact of the project on reliability?

Low positive impact

What is the existing asset's physical condition?

Poor

Justification:

Parking Facilities are inadequate currently. More parking is needed in the County.

Yes

Comprehensive Plan (or other): Is the project consistent with the jurisdiction's comprehensive plan?

Title of Plan:

Boone County Transportation Plan

Date Adopted:

January of 2018

Contact Person:

Robyn Bancroft

Provide page numbers and a link to the relevant local Comprehensive Plan where your project is identified. You may also upload relevant pages in your Application Submission Form online.

Truck Parking - Tier 1 Projects



Project Information

Build a truck parking facility in Boone County to help alleviate the truck parking problem in the County. Parking facility will consist of 70+/- truck parking spaces, fencing, lighting and a restroom facility. 4 possible locations were identified as potential sites.

Technology: Describe elements of your project that encourage the implementation of new technologies, automation, advanced materials, etc, in transportation.

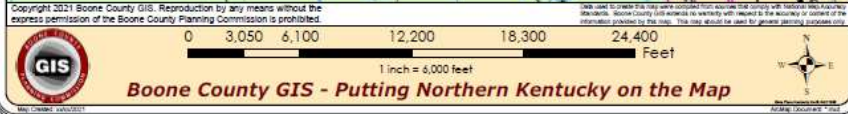
Security cameras, fast pay options, sensors will be used for the truck parking facility.

Phase	Fiscal Year	Requested Funds	Local Match**	Project Estimate	Local Match %
Design (KY Only)	2023	\$180,000	\$180,000	\$360,000	50.00%
PE-ROW Services		\$0	\$0	\$0	#DIV/0!
Right-of-Way	2025	\$150,000	\$150,000	\$300,000	50.00%
Utilities		\$0	\$0	\$0	#DIV/0!
Construction	2026	\$1,200,000	\$1,200,000	\$2,400,000	50.00%
Totals		\$1,530,000	\$1,530,000	\$3,060,000	50%



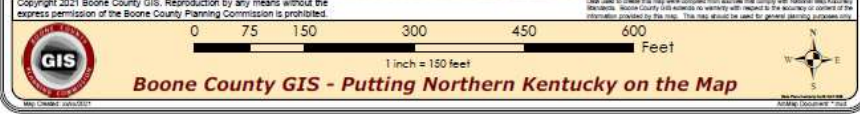
Potential Truck Parking Sites

www.boonecountygis.com



Boone County Truck Parking Facility

www.boonecountygis.com



OKI

No Action (yet) Strategies

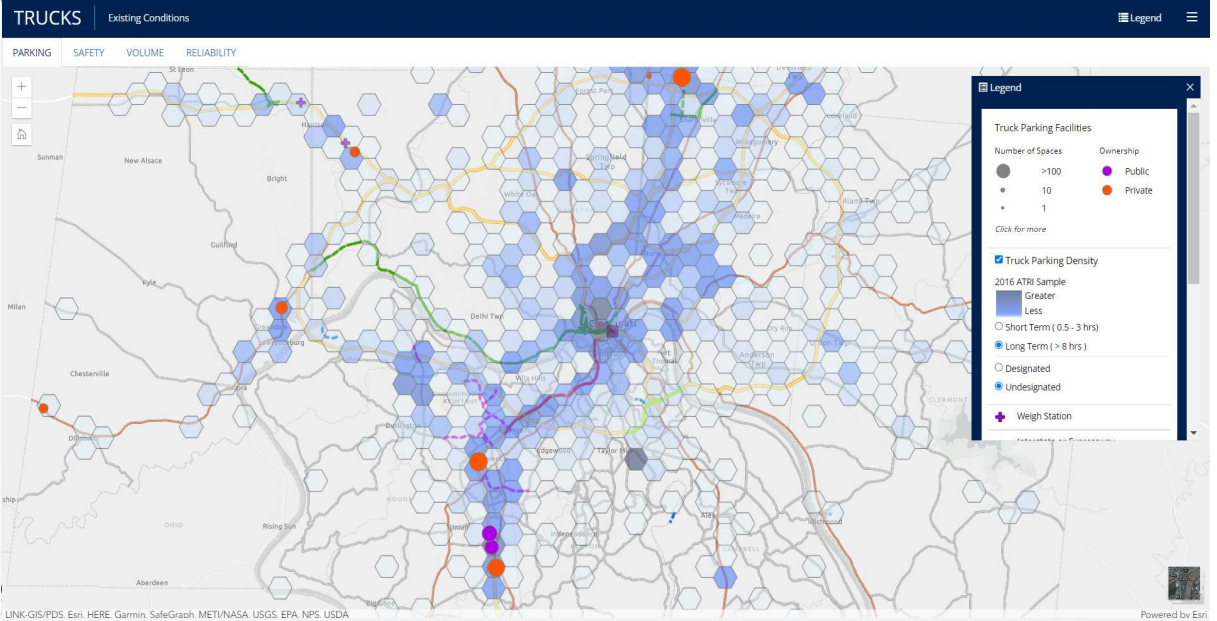
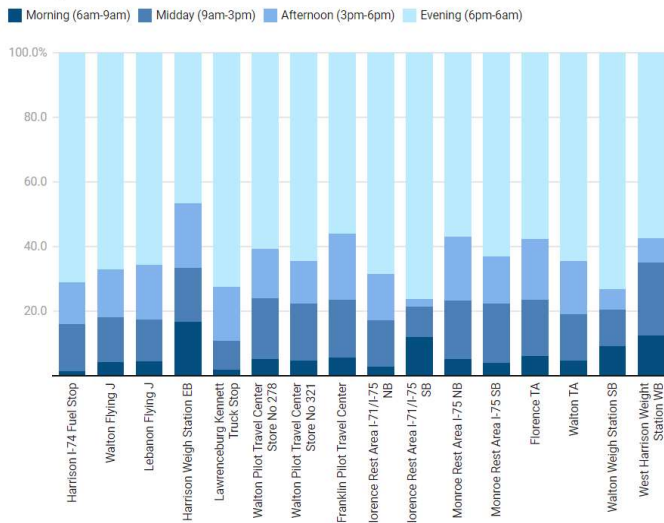
- **Create a Truck Parking “Marketing Plan”**
- **On-Time Dock Windows**
- **Retrofit Existing Industrial Parks**



Freight.oki.org



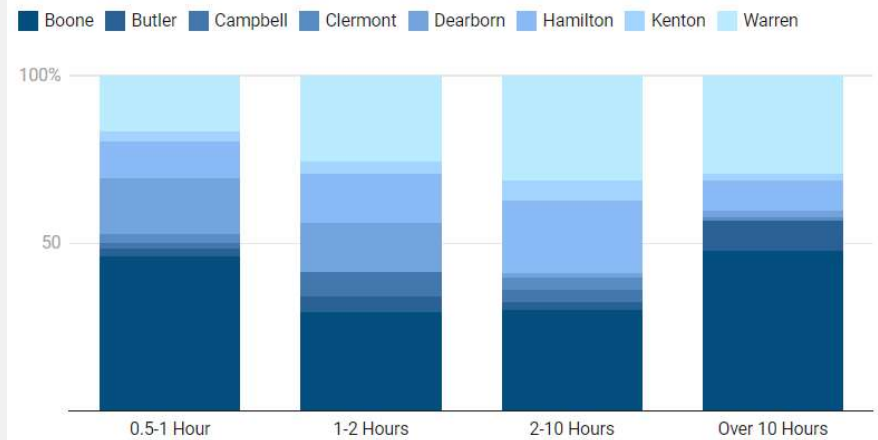
Percent Parked Trucks by Location and Arrival Time (March 1-15, 2016)



Boone County – trucks parked in undesignated locations (as % of region’s total) by length of time parked:

- ½ hour – 1 hour: 41.5%
- 1-2 hours: 29.3%
- 2-10 hours: 30.1%
- over 10 hours: 47.7%

Percent of Trucks Parked in Undesignated Locations by County and Dwell Time, (March 1-15, 2016)



Source: The Ohio-Kentucky-Regional Council of Governments (OKI). Preliminary Findings on Truck Parking Using ATRI Data (Dec 2019). American Transportation Research Institute (ATRI). [2016 Data set]. • [Get the data](#) • Created with [Datawrapper](#)

Top 10 Long Term (8+ hours) Truck Parking in Undesignated, Public Rights-of-Way

Ranking	Area	Location	County
1	I-71/75 NB and SB Rest Areas	Florence, Kentucky	Boone
2	Allen Road Area	Between I-75 and Cincinnati Dayton Rd, south of Union Centre Blvd	Butler
3	I-75 NB Rest Area	South of the SR 63 Interchange	Butler
4	US 50	From SR 1 to Lorey Lane	Dearborn
5	Langley Dr and Wright Blvd in Hebron	Includes area west of KY 237 encompassing portions of Bullittsville and Petersburg roads.	Boone
6	I-75 SB Rest Area	Monroe, Ohio	Butler
7	Decoursey Yard	Locust Pike from Wards Lan to Spanton Rd	Kenton
8	Queensgate Area/NS Gest Street Yard	Cincinnati along I-75 corridor	Hamilton
9	Mosteller/Crescentville Roads Area	North of the I-275/Mosteller Interchange between both NS rail lines	Hamilton/Butler
10	US 27 (Alexandria Pike)	Includes Bob Huber Dr and Cooper Bain Rd	Campbell

#1 & #5 in OKI region...Top 2 locations in NKY:

- I-71/75 NB and SB Rest Areas
- Langley Dr and Wright Blvd



KENTUCKY TRUCK PARKING STUDY

Why Truck Parking

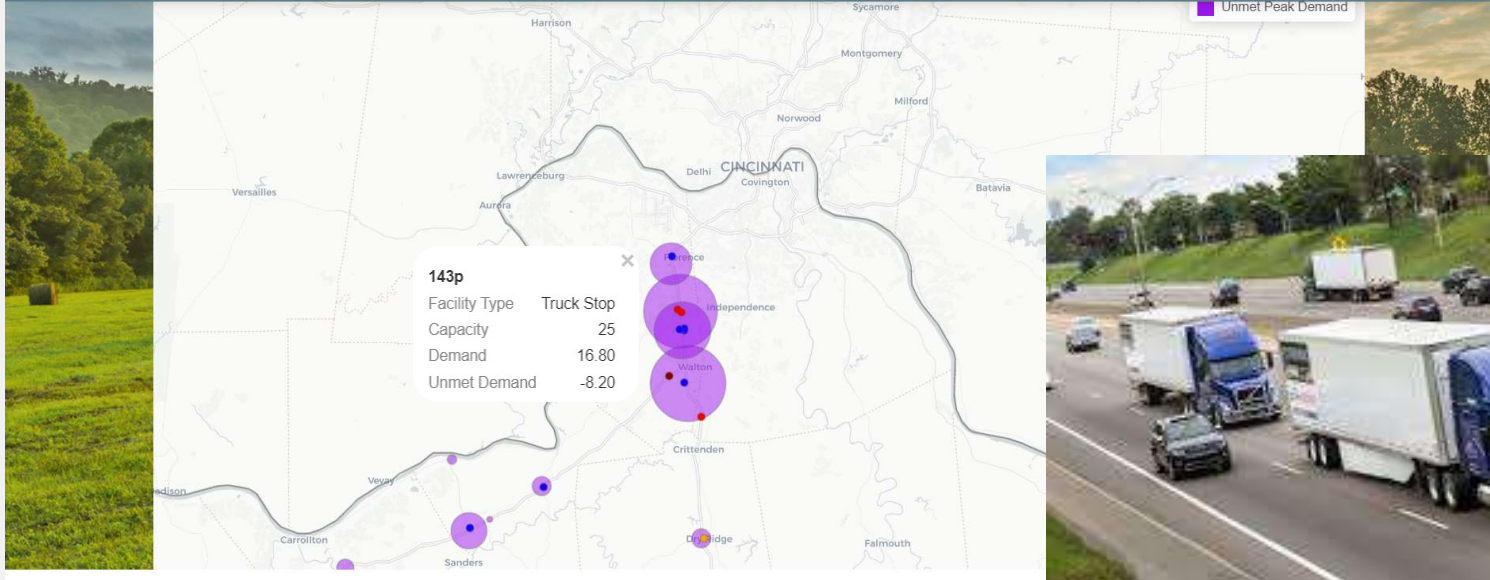
Current Trends

Study Goals

Key Takeaways

Truck Parking Supply and Demand Map

Connect



Automated Vehicles (AV) Pooled Fund

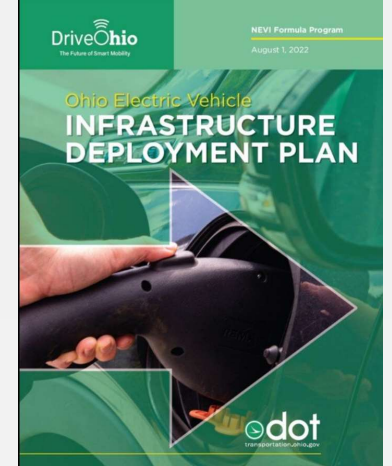
Freight Automation Corridor Coalition

DriveOhio

AASHIO

TRANSPORTATION POOLED FUND PROGRAM

"Crossroads of America"



Robyn Bancroft, AICP
Strategic Initiatives Manager
OKI Regional Council of Governments
(513) 619-7662
rbancroft@oki.org
www.oki.org
Freight.oki.org

www.oki.org



[/okiregional](https://www.facebook.com/okiregional)



[/okircog](https://twitter.com/okircog)

