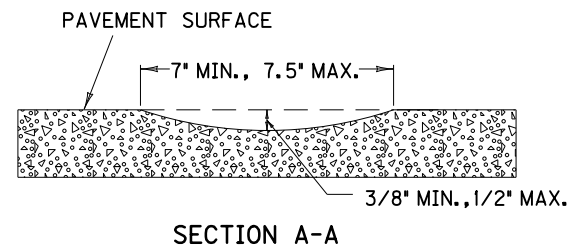
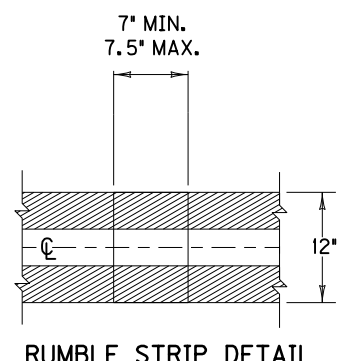
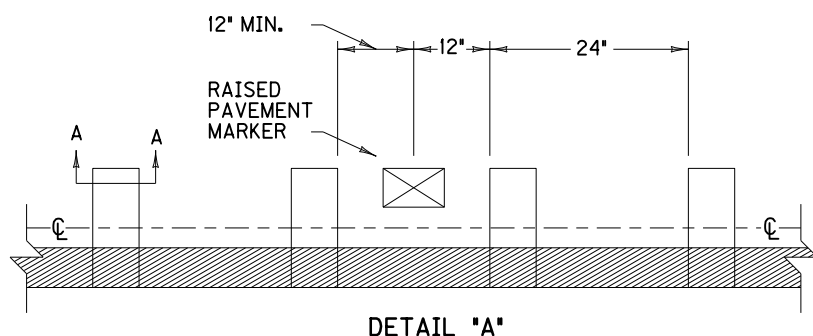
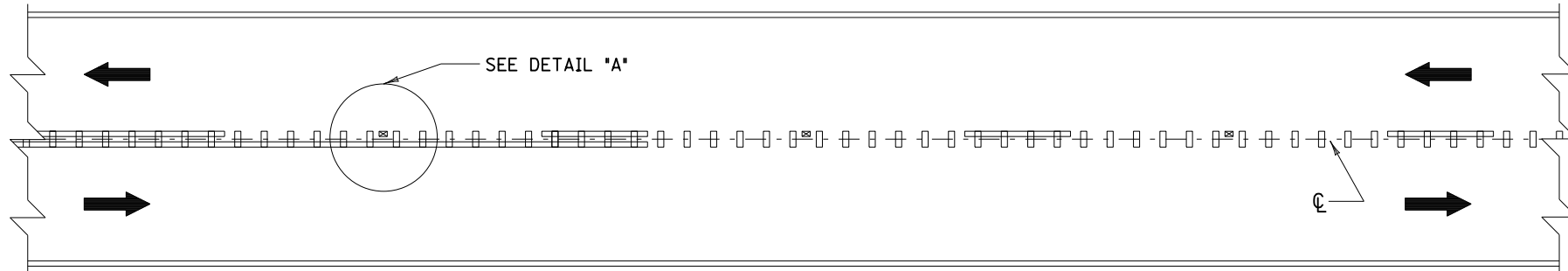


PLAN VIEW



~ NOTES ~

1. DISTANCES SHOWN ARE APPROXIMATE. MAINTAIN RUMBLE STRIP DIMENSIONS AND SPACING AS MUCH AS POSSIBLE.
2. RUMBLE STRIPS SHALL BE INSTALLED IN LINE WITH THE CENTER OF THE ROADWAY AS MUCH AS POSSIBLE.
3. DISCONTINUE RUMBLE STRIPS AT LEAST 12" BEFORE AND AFTER THE CENTER OF EACH RAISED PAVEMENT MARKER. INSTALL AS MANY RUMBLE STRIPS AS POSSIBLE BETWEEN ADJACENT PAVEMENT MARKERS WHILE MAINTAINING THE 24" CYCLE.
4. DO NOT INSTALL CENTERLINE RUMBLE STRIPS IN AREAS INDICATED ON **TPM-150**.
5. RUMBLE STRIPS SHALL BE OMITTED WHERE THE POSTED SPEED LIMIT IS 45 MPH OR LESS.

BID ITEMS AND UNIT TO BID  
 CENTERLINE RUMBLE STRIPS EACH  
 CENTERLINE RUMBLE STRIPS-12 IN EACH

DRAWING NOT TO SCALE

USE WITH CUR. STD. DWG.  
**TPM-150**

<b>KENTUCKY DEPARTMENT OF HIGHWAYS</b>	
<b>CENTERLINE RUMBLE STRIPS 4 INCH STRIPING</b>	
STANDARD DRAWING NO. TPM-155-02	
SUBMITTED <i>B. Allen Wolf</i>	DATE 12-01-15
<small>DIRECTOR OF TRANSPORTATION OPERATIONS</small>	
APPROVED <i>[Signature]</i>	DATE 12-01-15
<small>STATE HIGHWAY ENGINEER</small>	