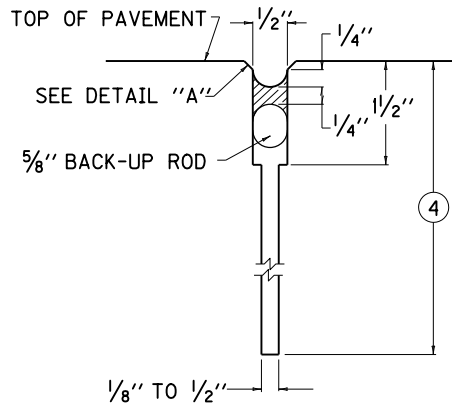
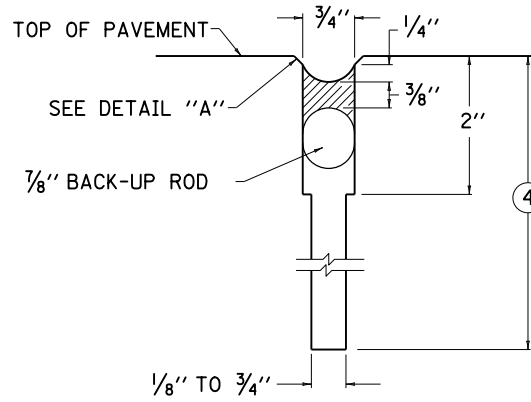


~ NOTES ~

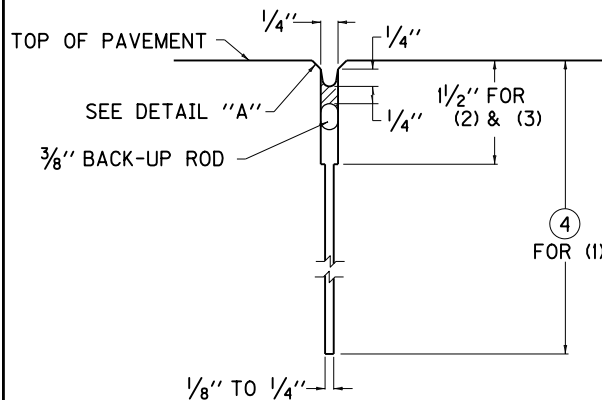


**JOINT SHAPE FOR
TRANSVERSE SAWED CONTRACTION JOINT**
(WHEN SLAB LENGTH DOES NOT EXCEED 25'-0'')

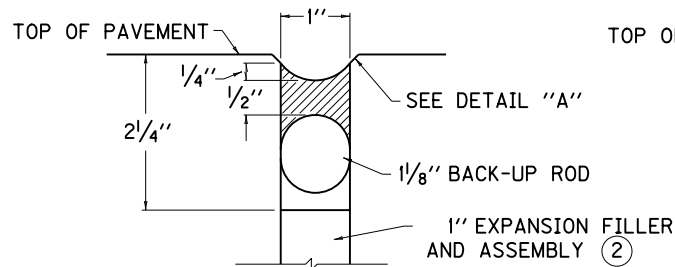


**JOINT SHAPE FOR
TRANSVERSE SAWED CONTRACTION JOINT**
(WHEN SLAB LENGTH EXCEEDS 25'-0'')

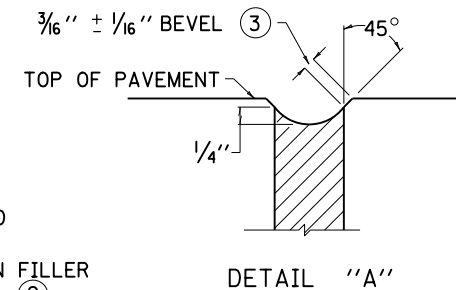
1. PAYMENT FOR WORK SHALL BE INCIDENTAL TO THE UNIT PRICE PER SQ. YD. OF PAVEMENT.
- ② THE REMAINING JOINT SHALL BE IN ACCORDANCE WITH CUR. STD. DWGS. [RPS-020](#) AND [RPS-010](#).
- ③ THESE EDGES SHALL BE BEVELED USING A CUTTING OR GRINDING DEVICE.
JOINT TOLERANCES : SAW CUT DEPTH -0" TO + 1/2"
SAW CUT WIDTH -0" TO + 1/16"
SEAL BEAD THICKNESS -0" TO + 1/8"
- ④ JOINT DEPTH IS T/3 OR 4", WHICHEVER IS LESS.
T = PAVEMENT THICKNESS.



- JOINT SHAPE FOR**
- (1) LONGITUDINAL SAWED JOINT (TIED)
 - (2) LONGITUDINAL SAWED CONSTRUCTION JOINT (TIED)
 - (3) TRANSVERSE SAWED CONSTRUCTION JOINT (TIED)



**JOINT SHAPE FOR
TRANSVERSE EXPANSION JOINT**



USE WITH CUR. STD. DWGS.
[RPS-010](#) , [RPS-020](#)

KENTUCKY	
DEPARTMENT OF HIGHWAYS	
SILICONE RUBBER SEALS FOR CONCRETE PAVEMENT	
STANDARD DRAWING NO. RPX-020-06	
SUBMITTED <i>William P. Gullett</i>	DATE 12-01-15
<small>DIRECTOR, DIVISION OF DESIGN</small>	
APPROVED <i>[Signature]</i>	DATE 12-01-15
<small>STATE HIGHWAY ENGINEER</small>	