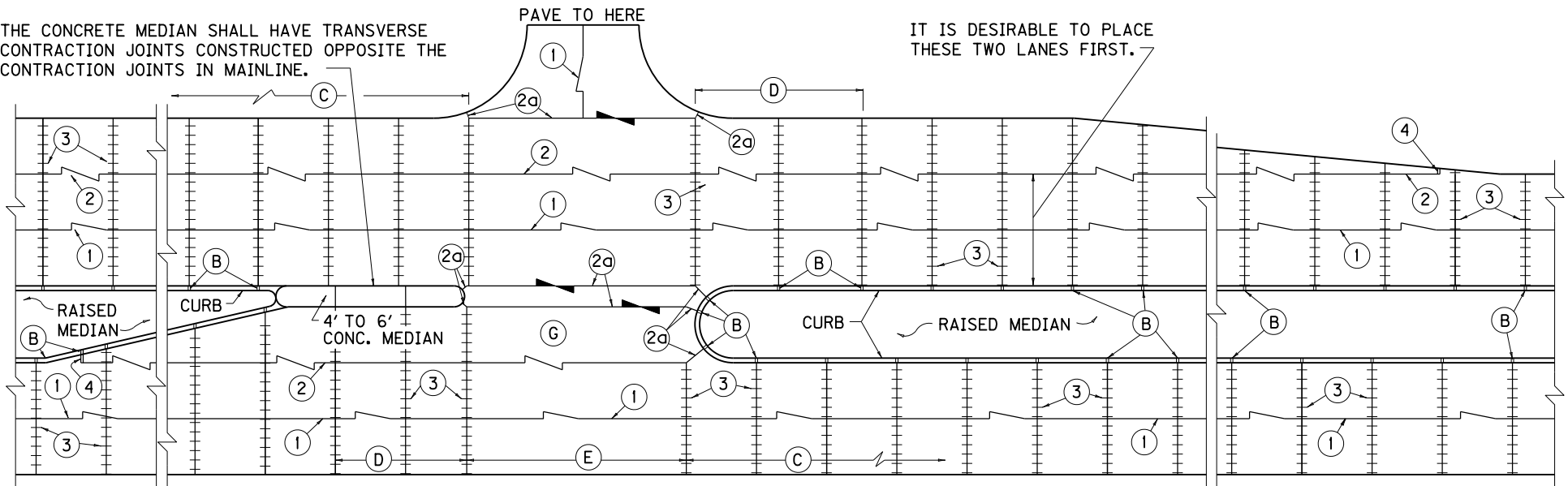
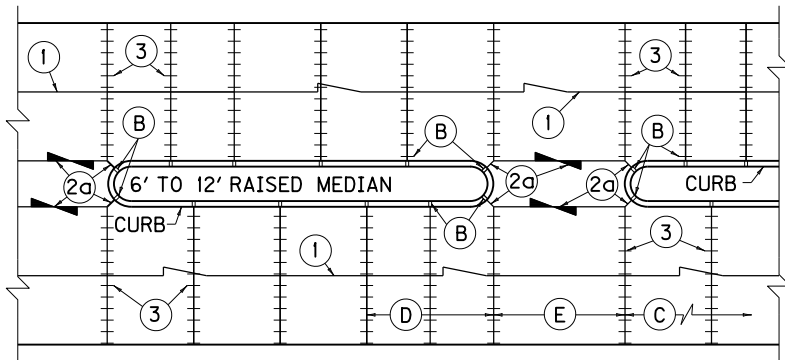


THE CONCRETE MEDIAN SHALL HAVE TRANSVERSE CONTRACTION JOINTS CONSTRUCTED OPPOSITE THE CONTRACTION JOINTS IN MAINLINE.

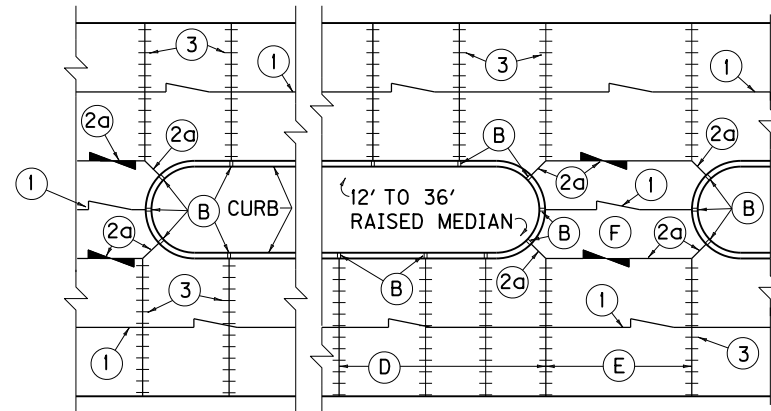
IT IS DESIRABLE TO PLACE THESE TWO LANES FIRST.



TYPICAL STORAGE LANE, CROSS-OVER SINGLE INTERSECTION, ACCELERATING AND DECELERATING LANE



TYPICAL DIVIDED PAVEMENT WITH NARROW RAISED MEDIAN AND CROSS-OVER



TYPICAL DIVIDED PAVEMENT WITH WIDE RAISED MEDIAN AND CROSS-OVER

~ NOTES ~

- (B) 1/2" EXPANSION JOINT FILLER.
- (C) NORMAL SPACING OF CONTRACTION JOINTS 15'-0" ON CENTER.
- (D) THIS DISTANCE TO BE EQUALLY DIVIDED WHEN GREATER THAN 20' AND LESS THAN 40'.
- (E) NO CONTRACTION JOINT REQUIRED WHEN DISTANCE LESS THAN NORMAL SPACING OF JOINTS. EQUALLY DIVIDED WHEN DISTANCE IS GREATER THAN 20' AND LESS THAN 40'.
- (F) A LONGITUDINAL SAWED JOINT SHALL BE CONSTRUCTED IN THE CROSS-OVER WHEN THE WIDTH OF CROSS-OVER BECOMES GREATER THAN 16' AND LESS THAN 24'. WHEN WIDTH BECOMES GREATER THAN 24' A LONGITUDINAL SAWED AND LONGITUDINAL CONSTRUCTION JOINT SHALL BE CONSTRUCTED IN THE CROSS-OVER.
- (G) SHOULD THE CROSSOVER LENGTH BECOME GREATER THAN NORMAL SPACING OF CONTRACTION JOINTS A TRANSVERSE CONTRACTION JOINT SHALL BE PLACED IN THE CROSS-OVER OPPOSITE THE CONTRACTION JOINTS IN THE MAINLINE.
- H. SEE CUR. STD. DWG. RPS-010 FOR JOINT SYMBOLS AND DETAIL.
- I. ALL INTEGRAL CURBS CONSTRUCTED WITH CONCRETE BASE OR PAVEMENT SHALL HAVE JOINTS COINCIDING WITH THE TRANSVERSE JOINTS AND OTHER JOINTS SHOWN ON THIS STANDARD DRAWING. THE JOINTS SHALL BE FILLED WITH 1/2" PREMOLDED EXPANSION JOINT FILLER, CUT TO THE REQUIRED SECTION.

USE WITH CUR. STD. DWG.  
RPS-010

KENTUCKY  
DEPARTMENT OF HIGHWAYS  
CONCRETE  
PAVEMENT JOINTS  
TYPES AND SPACING

STANDARD DRAWING NO. RPS-032-06

SUBMITTED	<i>William P. Gullett</i>	12-01-15
	DIRECTOR, DIVISION OF DESIGN	DATE
APPROVED	<i>[Signature]</i>	12-01-15
	STATE HIGHWAY ENGINEER	DATE