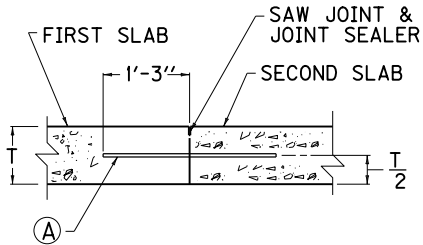
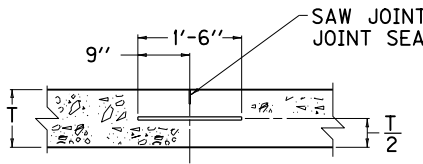


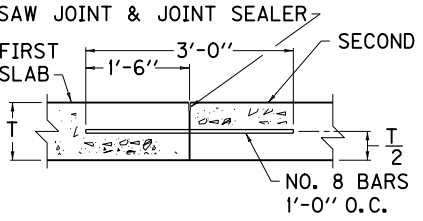
① LONGITUDINAL SAWED JOINT



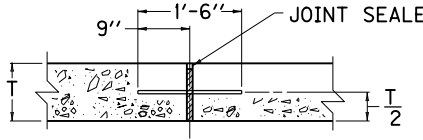
② LONGITUDINAL SAWED CONSTRUCTION JOINT



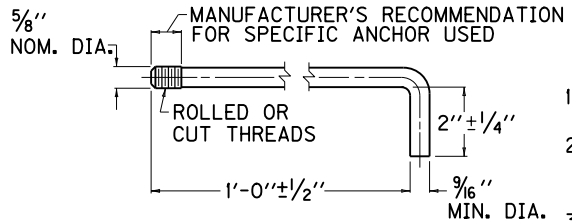
③ TRANSVERSE SAWED CONTRACTION JOINT



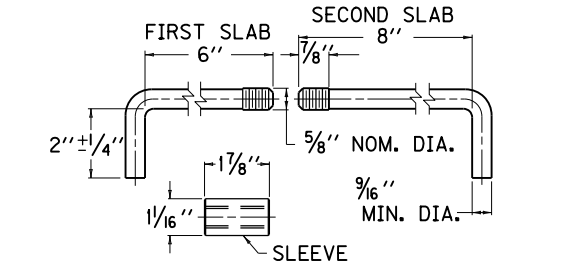
④ TRANSVERSE SAWED CONSTRUCTION JOINT



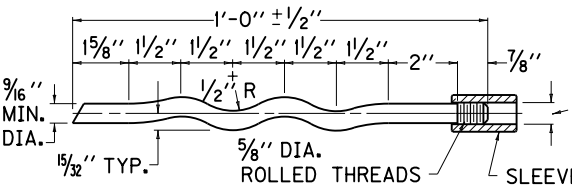
⑤ TRANSVERSE EXPANSION JOINT



② HOOK BOLT FOR USE WITH EXPANSION ANCHOR (SEE STANDARD SPECIFICATIONS FOR BASIS OF PAYMENT)



ALTERNATE 1 HOOK BOLTS FOR CONSTRUCTION JOINTS



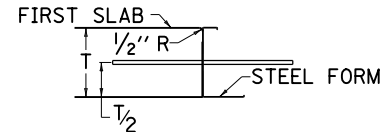
ALTERNATE 2 (FIRST SLAB) DEFORMED ANCHOR BOLT (TO BE USED WITH 8" HOOK BOLT)



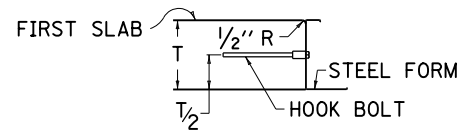
5/8" PLASTIC INSERT

~ NOTES ~

- LONGITUDINAL JOINTS SHALL BE USED WHEN SHOWN ON THE TYPICAL SECTION, AND STANDARD DRAWINGS AND SHALL BE CONSTRUCTED AS SHOWN ON THIS DRAWING.
  - LONGITUDINAL CONSTRUCTION JOINTS BETWEEN ADJOINING SLABS, AND PAVED IN SEPARATE OPERATIONS SHALL USE HOOK-BOLTS OR TIE BARS AND BE CONSTRUCTED AS SHOWN ON THIS DRAWING.
  - IN LIEU OF THE DEFORMED TIE BARS THE CONTRACTOR SHALL BE PERMITTED TO USE EITHER ALT. 1 OR ALT. 2 HOOK BOLT AS DETAILED.
  - DEFORMED TIE BARS USED IN TRANSVERSE CONSTRUCTION JOINTS SHALL BE NO CLOSER THAN 6" TO THE PAVEMENT EDGE OR ANY LONGITUDINAL JOINT.
- (A) NO. 5 DEFORMED TIE BAR 2'-6" LONG PLACED 1'-8" ON CENTER AND PLACED 1'-8" MINIMUM FROM ANY TRANSVERSE JOINT.
- (B) EXPANSION ANCHOR FOR BOLT SIZE INDICATED SHALL BE BETHLEHEM MINE ROOF EXPANSION TYPE WITH K-1 SHELL, PHILLIPS RED HEAD ANCHOR, CHICAGO EXPANSION BOLT CO. - SPECIAL FLUSH SELF DRILLING ANCHOR, OR APPROVED TYPE. INSTALLATION SHALL CONFORM TO MANUFACTURER'S RECOMMENDATION. HOOK BOLTS WITH EXPANSION ANCHORS ATTACHED SHALL NOT BE LESS THAN 14" IN LENGTH. HOOK BOLTS WITH EXPANSION ANCHORS SHALL BE SPACED 5'-0" O.C.



TYPE A



TYPE B

METHODS OF FORMING CONSTRUCTION JOINTS WHEN FORMS ARE USED

JOINT SYMBOLS	
	① LONGITUDINAL SAWED JOINT
	② LONGITUDINAL SAWED CONSTRUCTION JOINT
	③ TRANSVERSE SAWED CONTRACTION JOINT
	④ TRANSVERSE SAWED CONSTRUCTION JOINT (1'-0" MIN.)
	⑤ TRANSVERSE EXPANSION JOINT
	①a LONGITUDINAL SAWED JOINT (WITHOUT TIE BARS)
	②a LONGITUDINAL SAWED CONSTRUCTION JOINT (WITHOUT TIE BARS)
	③a TRANSVERSE SAWED CONTRACTION JOINT (WITHOUT LOAD TRANSFER ASSEMBLY)
	④a TRANSVERSE SAWED CONSTRUCTION JOINT (WITHOUT TIE BARS)
	⑤a 1/2" TRANSVERSE EXPANSION JOINT (WITHOUT LOAD TRANSFER ASSEMBLY)

USE WITH CUR. STD. DWGS.  
 RPN-001, RPN-010, RPN-015,  
 RPN-020, RPS-030, RPS-031,  
 RPS-032, RPS-033, RPS-034,  
 RPS-035, RPS-036, RPS-037,  
 RPS-038, RPS-039, RPX-010,  
 RPX-015, RPX-020

<b>KENTUCKY</b>	
<b>DEPARTMENT OF HIGHWAYS</b>	
<b>CONCRETE PAVEMENT</b>	
<b>JOINT DETAILS</b>	
STANDARD DRAWING NO. RPS-010-11	
SUBMITTED	DATE 12-01-15
<i>William P. Gullett</i> DIRECTOR, DIVISION OF DESIGN	
APPROVED	DATE 12-01-15
<i>John</i> STATE HIGHWAY ENGINEER	