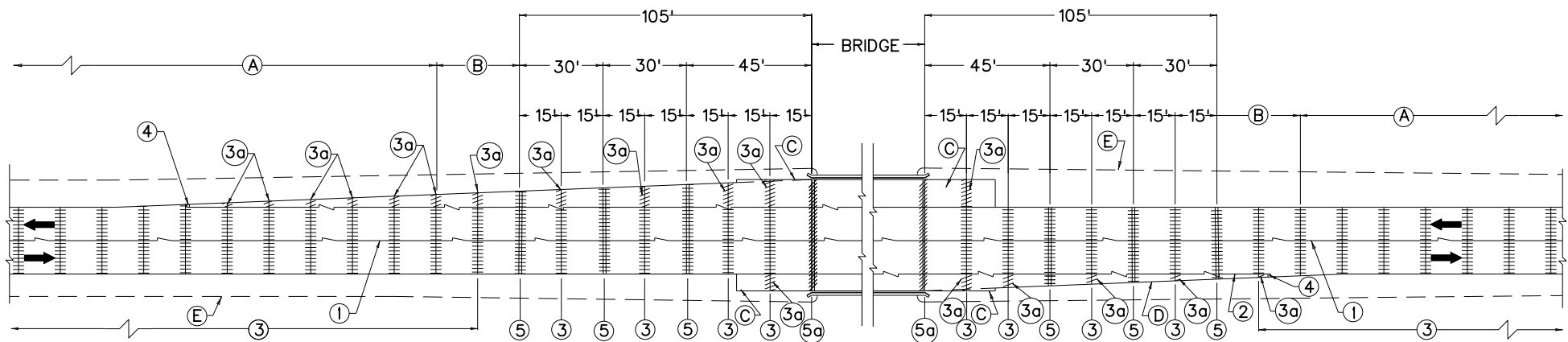


SINGLE BRIDGE OR TWIN BRIDGES WITH ONE DIRECTION TRAFFIC



SINGLE BRIDGE WITH TWO DIRECTION TRAFFIC

~ NOTES ~

- (A) NORMAL SPACING OF TRANSVERSE CONTRACTION JOINTS ARE 15'-0" ON CENTER TAKEN ALONG  $\mathcal{C}$  OF PAVEMENT.
- (B) THIS DISTANCE IS TO BE EQUALLY DIVIDED WHEN IT IS LESS THAN THE SUM OF THE SPACING OF THE NEXT TWO TRANSVERSE CONTRACTION JOINTS EXCEEDS A MAXIMUM OF 15'-0".
- (C) THIS SLAB REQUIRED ONLY WHEN NEEDED FOR BRIDGE END DRAINAGE.
- (D) PAVEMENT TRANSITION 25':1', NOT PERMITTED WHEN CONSTRUCTED IN CONJUNCTION WITH P.C.C. SHOULDERS.
- (E) SHOULDER TRANSITION 100':1'.
- F. SEE CUR. STD. DWG. [RPS-010](#) FOR JOINT SYMBOLS AND DETAILS.
- G. IF WORK IS INTERRUPTED IN EXCESS OF 30 MINUTES, OR AT THE END OF A DAYS PAVING, A TRANSVERSE CONSTRUCTION JOINT SHALL BE INSTALLED; HOWEVER, IT SHALL NOT BE PERMITTED WITHIN 5' OF A TRANSVERSE CONTRACTION JOINT.

USE WITH CUR. STD. DWG.  
[RPS-010](#)

<b>KENTUCKY</b>		
<b>DEPARTMENT OF HIGHWAYS</b>		
<b>PAVEMENT TRANSITIONS &amp; JOINT DETAILS FOR JOINED PLAIN CONCRETE PAVEMENT AT BRIDGE ENDS</b>		
STANDARD DRAWING NO. <a href="#">RPN-010-07</a>		
SUBMITTED <i>William P. Galbraith</i>	DATE	12-01-15
<small>DIRECTOR, DIVISION OF DESIGN</small>		
APPROVED <i>[Signature]</i>	DATE	12-01-15
<small>STATE HIGHWAY ENGINEER</small>		
	DATE	