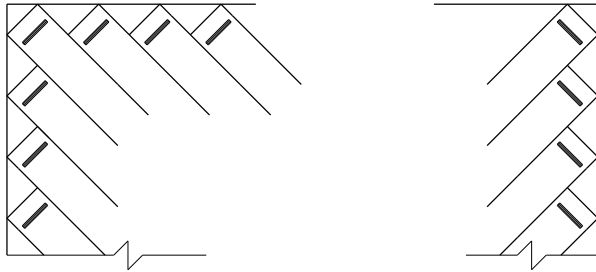


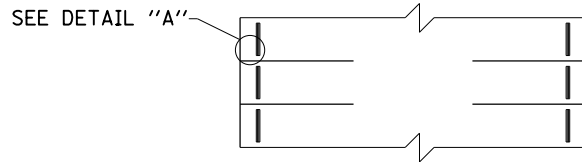
~ NOTES ~

BID ITEM AND UNIT TO BID
 PRECAST VEHICLE STOP LF

1. THE UNIT PRICE BID PER LINEAR FOOT FOR "PRECAST VEHICLE STOP" SHALL INCLUDE ALL CLASS "A" CONCRETE, STEEL REINFORCEMENT, STEEL DOWELS, LABOR AND ALL INCIDENTALS NECESSARY FOR A COMPLETE INSTALLATION.
2. THE PLANS SHALL SPECIFY THE LENGTHS OF THE INDEPENDENT UNITS. 2'-0", 4'-0", 6'-0" AND 8'-0" ARE STANDARD LENGTHS. 3'-0", 5'-0" AND 7'-0" LENGTHS MAY BE USED WHEN REQUIRED.
3. NO. 5 BARS - 1'-6" MIN. LENGTH. FILL VOID WITH BUTYL RUBBER CAULKING (COMMERCIAL GRADE) OR OTHER APPROVED MATERIAL.
4. NO. 3 DEFORMED BARS (OR LARGER) 3 REQUIRED.
5. THE MINIMUM REQUIREMENT FOR REINFORCING STEEL SHALL BE GRADE 40.
6. THE UNIT WEIGHS APPROXIMATELY 38 LBS./FT.
7. OTHER TYPES OF STOPS MAY BE PERMITTED IF APPROVED IN WRITING BY THE ENGINEER.

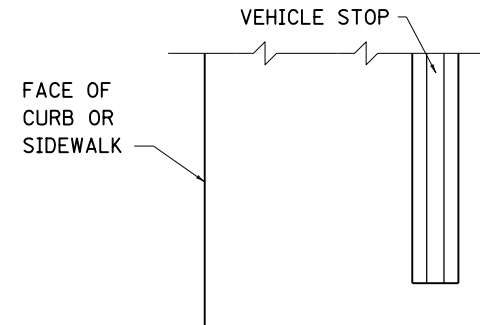


ANGLED PARKING

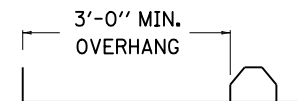


PERPENDICULAR PARKING

TYPICAL VEHICLE STOP
 INSTALLATION

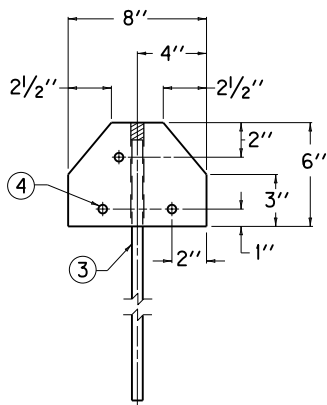


PLAN VIEW

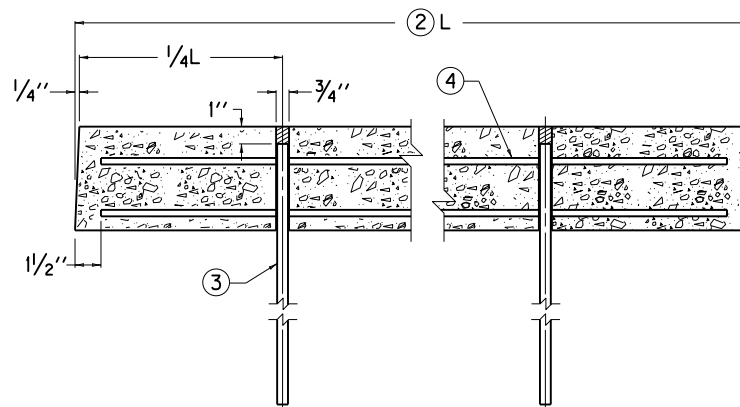


END ELEVATION

DETAIL "A"



END VIEW



SECTIONAL ELEVATION VIEW

KENTUCKY DEPARTMENT OF HIGHWAYS	
PRECAST VEHICLE STOP	
STANDARD DRAWING NO. RPM-130-04	
SUBMITTED <i>William P. Galbraith</i> <small>DIRECTOR, DIVISION OF DESIGN</small>	DATE 12-01-15
APPROVED <i>[Signature]</i> <small>STATE HIGHWAY ENGINEER</small>	DATE 12-01-15