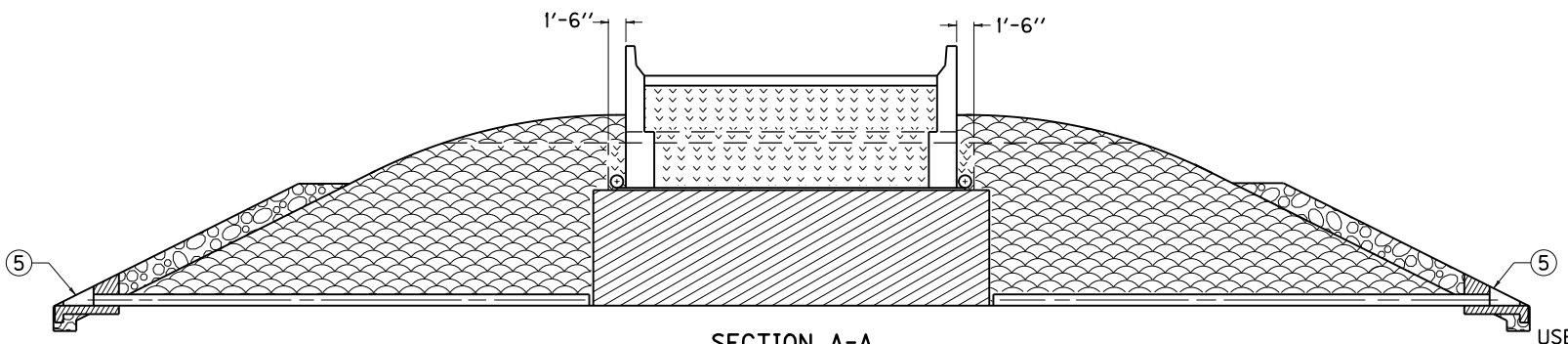


- LEGEND**
- ① SLOPE PROTECTION (SEE BRIDGE PLANS)
 - ② EMBANKMENT (GRANULAR, ROCK OR SOIL PER PLANS)
 - ③ GRANULAR PILE CORE OR COHESIVE PILE CORE
 - ④ STRUCTURE GRANULAR BACKFILL
 - ⑤ 4" PERFORATED UNDERDRAIN PIPE

PLAN VIEW



SECTION A-A

~ NOTES ~

- THE PURPOSE OF THIS DRAWING AND CUR. STD. DWG. **RGX-105** IS TO DEFINE THE LIMITS OF THE FOUR MATERIALS SHOWN. FOR SIMPLICITY PURPOSES, AN END-BENT ON A ZERO DEGREE SKEW IS SHOWN. THE SAME PRINCIPLES WOULD APPLY FOR MORE VARIED STRUCTURES.
- ① SLOPE PROTECTION REQUIRED WHEN AND AS NOTED ON THE BRIDGE PLANS.
 - ② GRANULAR OR ROCK EMBANKMENT REQUIRED WHEN AND AS NOTED ON THE ROADWAY PLANS.
 - ③ GRANULAR PILE CORE REQUIRED WITH GRANULAR OR ROCK EMBANKMENT. COHESIVE PILE CORE REQUIRED WITH DRILLED SHAFTS AND PRE-DRILLED PILES.
 - ④ STRUCTURE GRANULAR BACKFILL REQUIRED AT ALL TIMES.
 - ⑤ 8" PERFORATED UNDERDRAIN PIPE. FOR HEADWALL CONSTRUCTION SEE CUR. STD. DWG **RDP-010**.

USE WITH CUR. STD. DWGS.
RDP-010, RGX-105

KENTUCKY		
DEPARTMENT OF HIGHWAYS		
TREATMENT OF EMBANKMENTS AT END-BENTS		
STANDARD DRAWING NO. RGX-100-06		
SUBMITTED	<i>William P. Gullett</i> DIRECTOR, DIVISION OF DESIGN	12-01-15 DATE
APPROVED	<i>[Signature]</i> STATE HIGHWAY ENGINEER	12-01-15 DATE