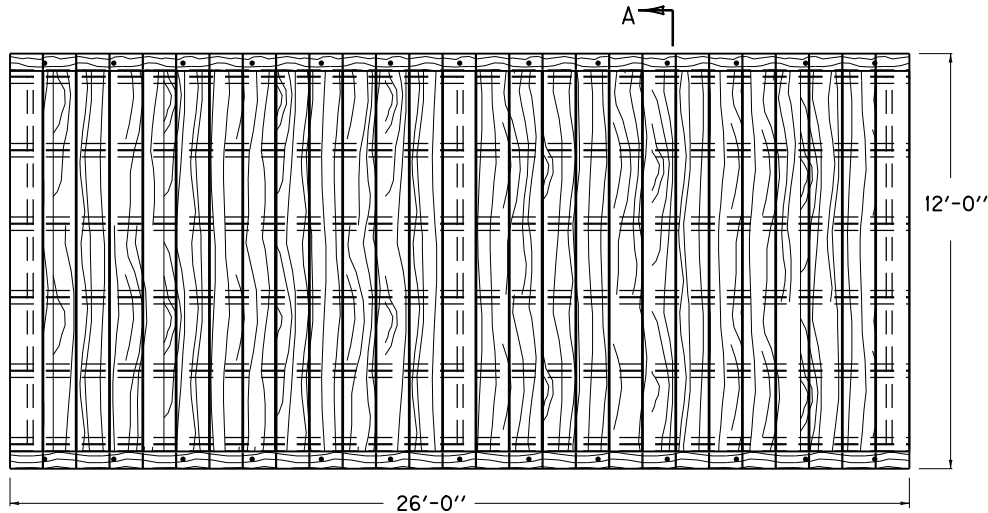


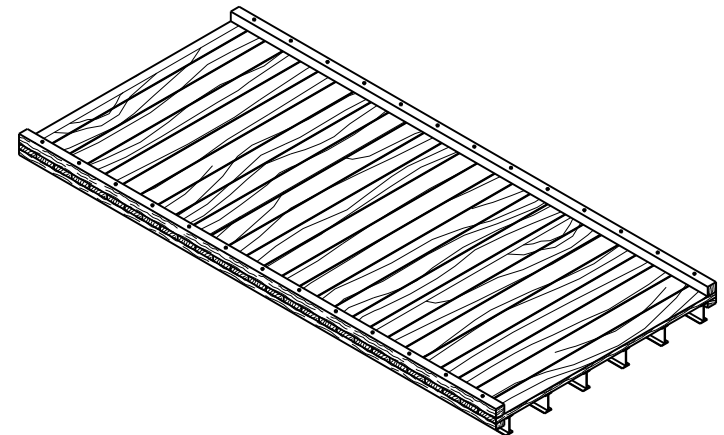
~ NOTES ~

BID ITEM AND UNIT TO BID
TEMPORARY BRIDGE EACH

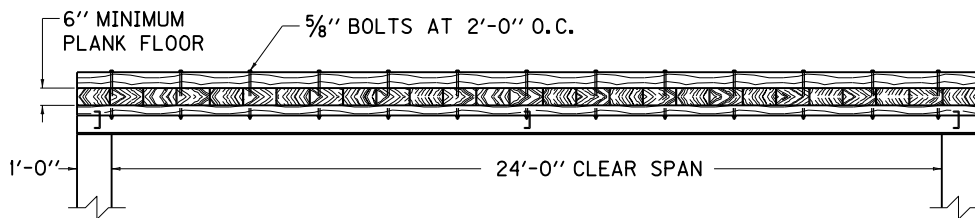
1. TYPES OF TEMPORARY BRIDGES AND PAVEMENT CROSSOVERS, OTHER THAN THE I-BEAM BRIDGE SHOWN HERE, WILL BE ACCEPTABLE UPON APPROVAL BY THE DEPARTMENT.
2. UNLESS OTHERWISE SPECIFIED THE STRUCTURE SHALL BE DESIGNED FOR AN HS20-44 LOADING.
3. STRUCTURE TO REMAIN THE PROPERTY OF THE CONTRACTOR.



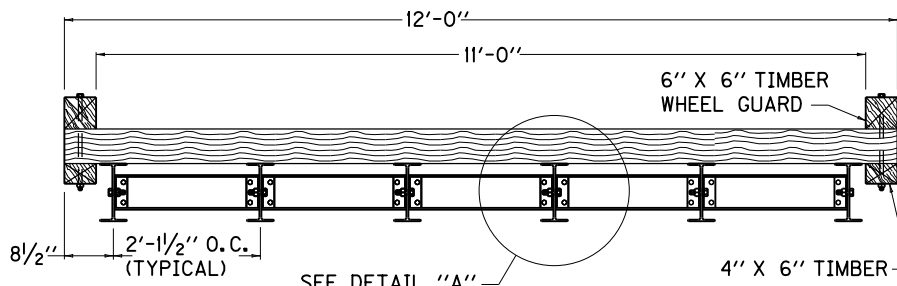
PLAN VIEW



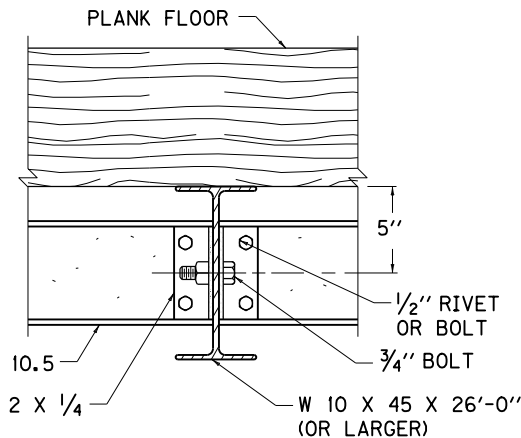
ISOMETRIC VIEW



ELEVATION VIEW



SECTION A-A



DETAIL "A"

KENTUCKY		
DEPARTMENT OF HIGHWAYS		
TEMPORARY BRIDGE		
OR		
PAVEMENT CROSSOVER		
STANDARD DRAWING NO. RGX-003-03		
SUBMITTED	<i>William P. Gullett</i> DIRECTOR, DIVISION OF DESIGN	12-01-15 DATE
APPROVED	<i>[Signature]</i> STATE HIGHWAY ENGINEER	12-01-15 DATE