

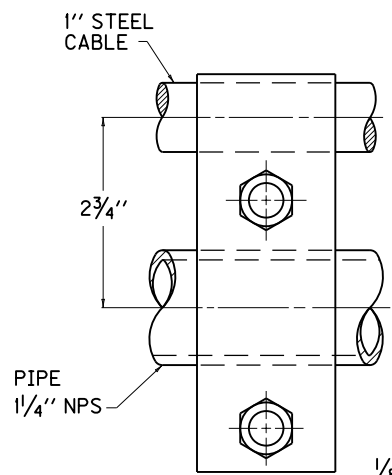
TYPICAL WATER GATE

~ NOTES ~

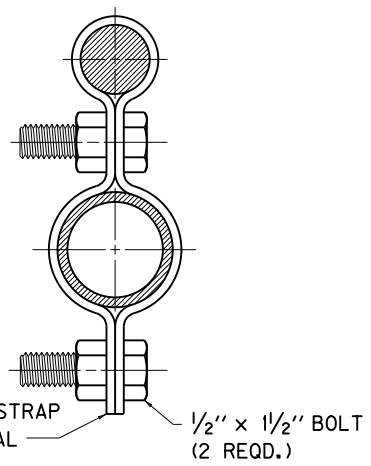
1. THIS ILLUSTRATION DEPICTS WATER GATE TYPE I USING WOVEN WIRE FABRIC.
2. FABRIC TIE WIRES SHALL BE SPACED 1'-0" ON CENTERS. THE CONTRACTOR IS NOT TO ORDER GATES OF ANY TYPE UNTIL THEIR NECESSITY AND LOCATION ARE CERTIFIED BY THE ENGINEER.
3. ALL FENCE FITTINGS SHALL COMPLY WITH ASTM F626.
4. WOVEN-WIRE FABRIC USED ON WATER GATE TYPE I SHALL BE EITHER ALUMINUM-COATED STEEL NO. 1047-6-9 OR ZINC COATED STEEL NO. 1047-6-9.
5. WATER GATES SHALL HAVE HEAVY PRESSED STEEL CORNERS SECURELY RIVETED OR SHALL BE MACHINE NOTCHED AND ELECTRICALLY WELDED SO AS TO BE RIGID AND WATER TIGHT. ALL WELDED JOINTS SHALL BE CLEANED AND PAINTED WITH TWO (2) COATS OF ALUMINUM PAINT.
6. NPS = NOMINAL PIPE SIZE - ASTM F1083 AND F1043 (HEAVY INDUSTRIAL FENCE) SHALL GOVERN.

BID ITEMS AND UNIT TO BID  
 WATER GATE TYPE I  
 CONCRETE-CLASS A  
 CONCRETE-CLASS B  
 STEEL REINFORCEMENT

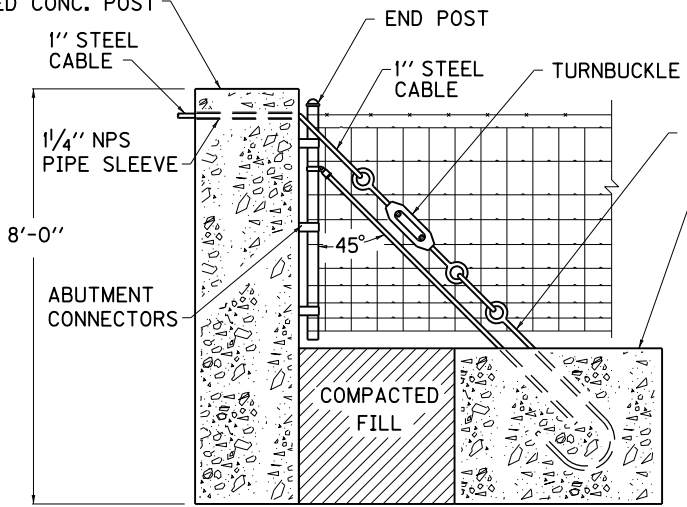
EACH  
 CUYD  
 CUYD  
 LB



DETAIL "A"



2'-0" x 2'-0" CLASS "A"  
 REINFORCED CONC. POST



DETAIL "B"

CHANNEL TO BE CUT IN SUCH A MANNER AS TO ALLOW GATES TO SWING AND BE RIPRAPPED IF SO DIRECTED ON CONSTRUCTION BY THE ENGINEER.

<b>KENTUCKY DEPARTMENT OF HIGHWAYS</b>	
<b>WATER GATE TYPE I</b>	
STANDARD DRAWING NO. RFG-010-05	
SUBMITTED <i>William P. Galbraith</i>	12-01-15
<small>DIRECTOR, DIVISION OF DESIGN</small>	
APPROVED <i>[Signature]</i>	12-01-15
<small>STATE HIGHWAY ENGINEER</small>	