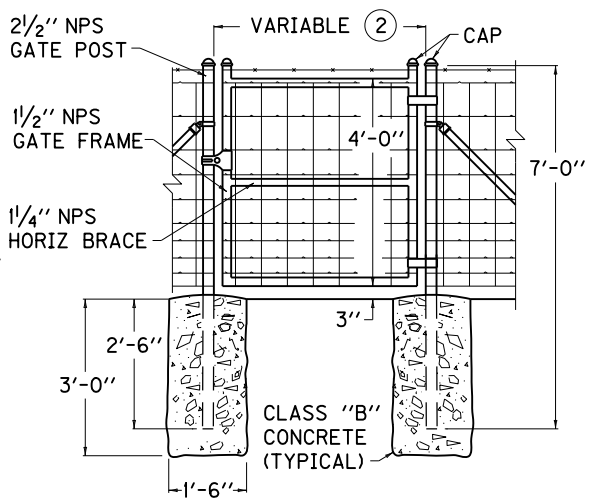
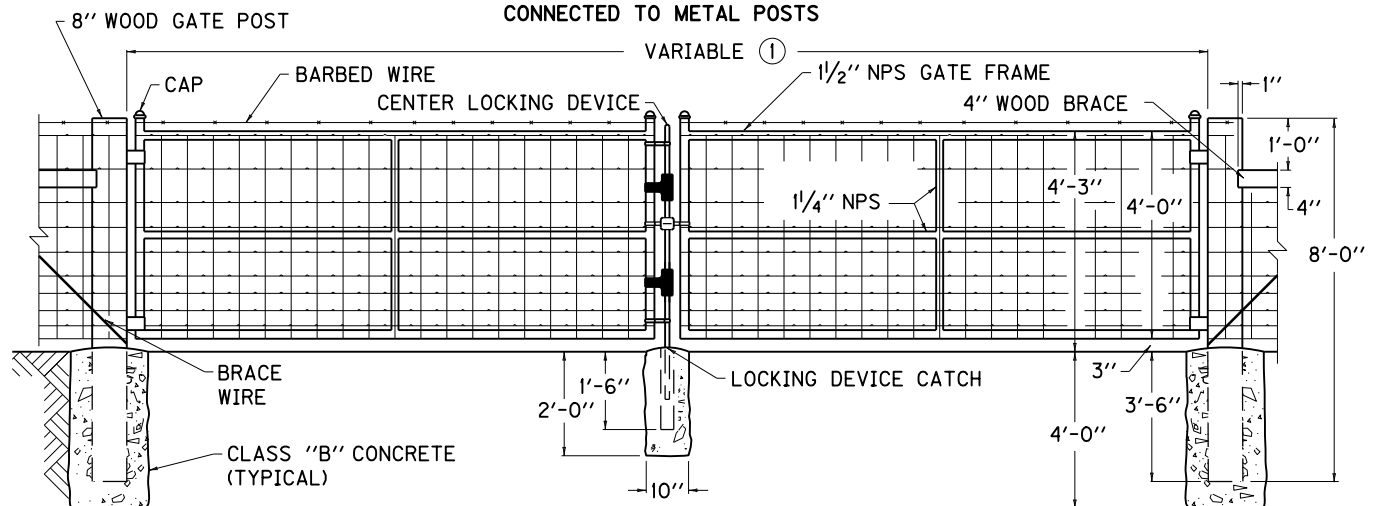


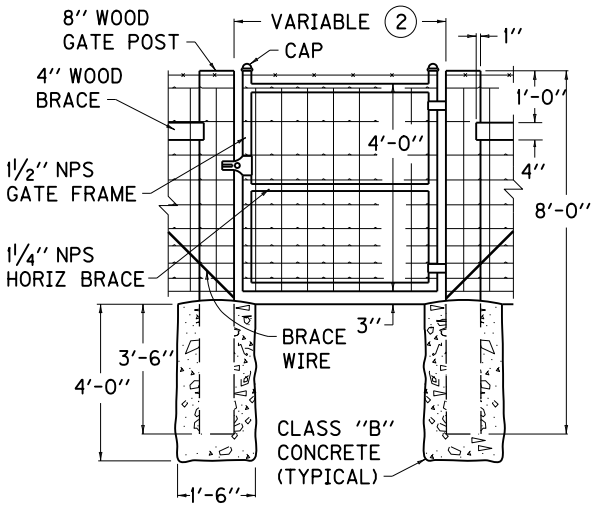
VEHICULAR GATE
CONNECTED TO METAL POSTS



PEDESTRIAN GATE
CONNECTED TO METAL POSTS



VEHICULAR GATE
CONNECTED TO WOOD POSTS



PEDESTRIAN GATE
CONNECTED TO WOOD POSTS

~ NOTES ~

- BID ITEMS AND UNIT TO BID
- SINGLE VEHICULAR WOVEN WIRE GATE EACH
- OR
- DOUBLE VEHICULAR WOVEN WIRE GATE EACH
- OR
- PEDESTRIAN WOVEN WIRE GATE EACH
- CONCRETE-CLASS B CUYD
- ① 6' TO 13' WIDTH FOR SINGLE GATE AND 12' TO 26' WIDTH FOR DOUBLE GATE.
- ② 4' TO 6' WIDTH
- 3. FABRIC TIE WIRES SHALL BE SPACED 1'-0" ON CENTERS.

- 4. THE CONTRACTOR IS NOT TO ORDER GATES UNTIL THEIR NECESSITY AND LOCATION HAVE BEEN CERTIFIED BY THE ENGINEER.
- 5. WOVEN-WIRE FABRIC USED IN THE GATES SHALL EITHER BE ALUMINUM-COATED STEEL NO. 1047-6-9 OR ZINC-COATED STEEL NO. 1047-6-9.
- 6. NPS = NOMINAL PIPE SIZE - ASTM F1083 AND F1043 (HEAVY INDUSTRIAL FENCE) SHALL GOVERN.
- 7. GATES SHALL HAVE HEAVY PRESSED STEEL CORNERS SECURELY RIVETED OR SHALL BE MACHINE NOTCHED AND ELECTRICALLY WELDED SO AS TO BE RIGID AND WATER TIGHT. ALL WELDED JOINTS SHALL BE CLEANED AND PAINTED WITH TWO (2) COATS OF ALUMINUM PAINT.

**KENTUCKY
DEPARTMENT OF HIGHWAYS**

**WOVEN WIRE
GATES**

STANDARD DRAWING NO. RFG-001-07

SUBMITTED <i>William P. Gallo</i>	DATE 12-01-15
APPROVED <i>[Signature]</i>	DATE 12-01-15
STATE HIGHWAY ENGINEER	DATE