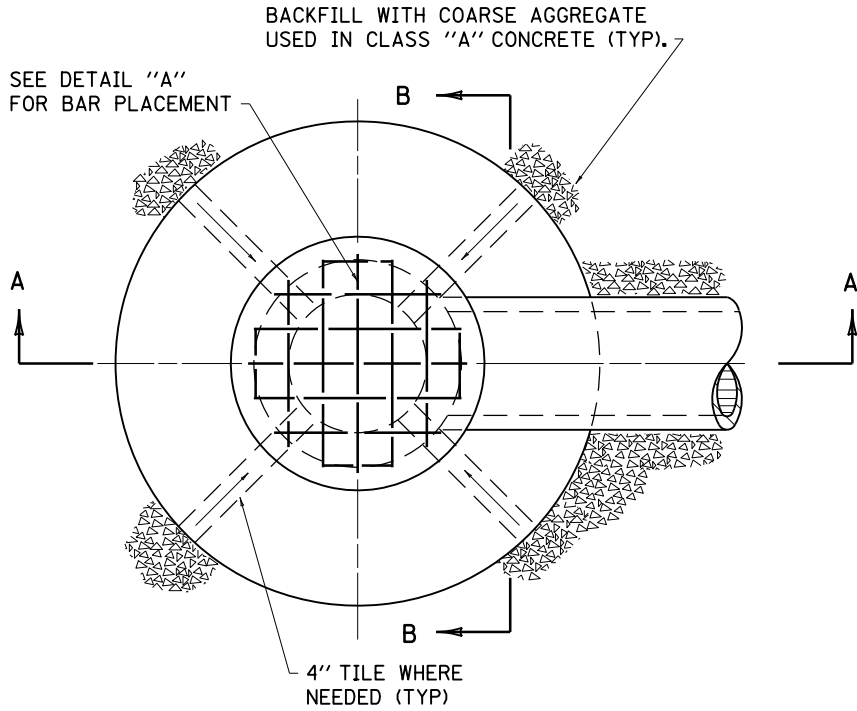


~ NOTES ~

- BID ITEM AND UNIT TO BID  
 SPRING BOX INLET TYPE B EACH
- 12", 15", OR 18" DIAMETER PIPE OUTLET (SEE PIPE SECTIONS FOR SIZE AND TYPE). MORTAR AROUND PIPE TO PREVENT SEEPAGE.
  - SPRING BOX INLET TYPE "B" MAY BE USED WHEN FILL OVER TOP IS LESS THAN 10'-0".
  - STEEL REINFORCEMENT PLACED 6" ON CENTERS.
  - "+" IS CONCRETE PIPE WALL THICKNESS OR METAL PIPE CORRUGATION DEPTH.



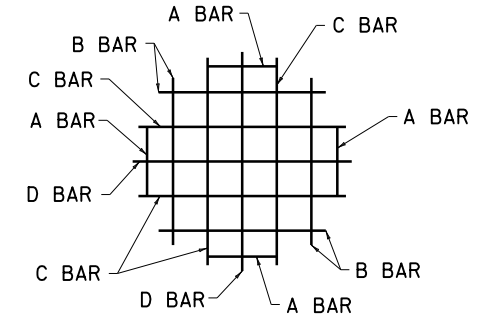
PLAN VIEW

STEEL REINFORCEMENT FOR CONCRETE COVER

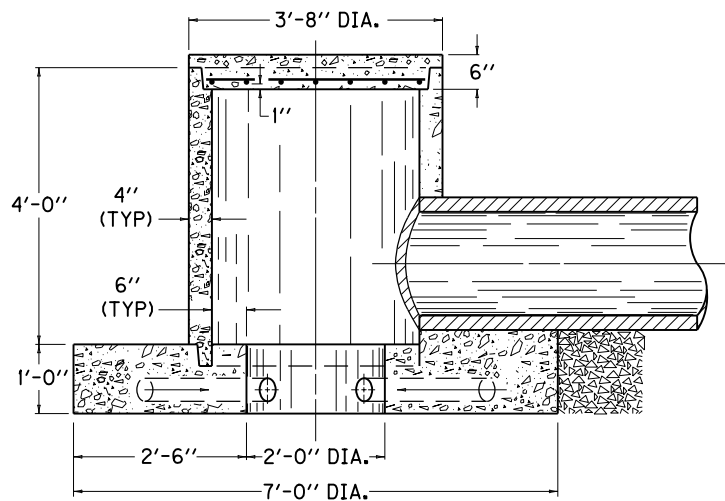
NO. 3 STEEL BARS	TOTAL		
BAR QTY.	LENGTH	LBS.	
A	4	1'-0"	13
B	4	2'-5"	
C	4	3'-0"	
D	2	3'-2"	

CLASS "A" CONCRETE

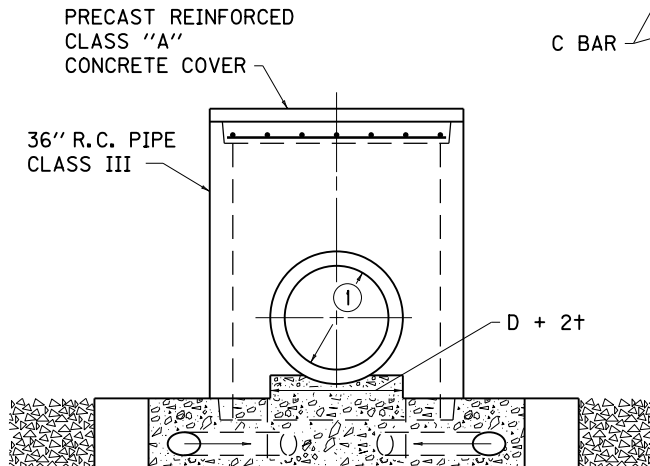
PIPE DIA.	CU. YDS. CONCRETE
12"	1.54
15"	
18"	



DETAIL "A"



SECTION A-A



SECTION B-B

**KENTUCKY  
 DEPARTMENT OF HIGHWAYS**

**SPRING BOX INLET  
 TYPE B**

STANDARD DRAWING NO. RDX-011-05

SUBMITTED *William P. Galles* DATE 12-01-15  
DIRECTOR, DIVISION OF DESIGN

APPROVED *[Signature]* DATE 12-01-15  
STATE HIGHWAY ENGINEER