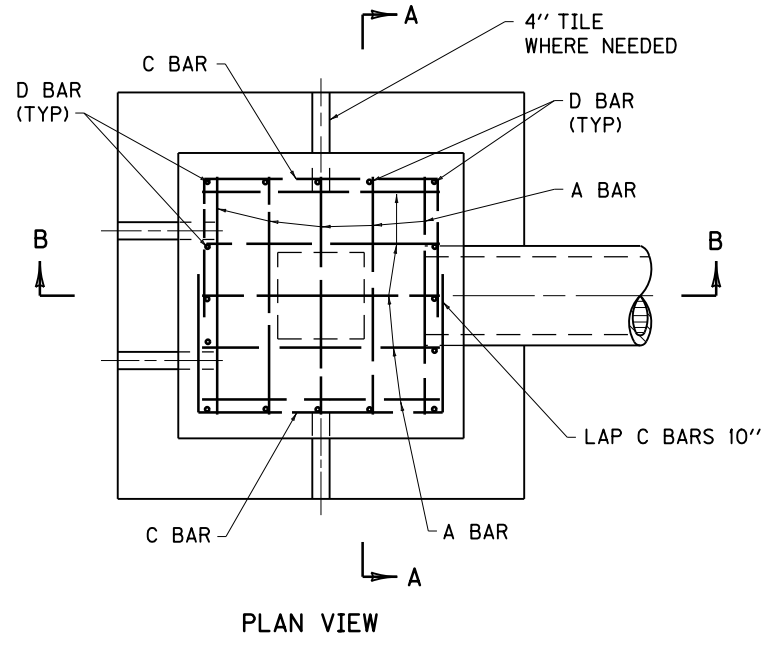


~ NOTES ~

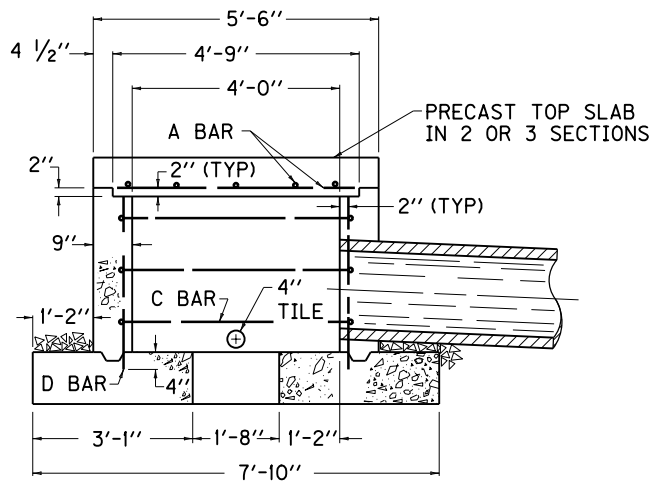
BID ITEM AND UNIT TO BID
 SPRING BOX INLET TYPE A EACH

1. LOCATION OF OPENING MAY BE DETERMINED IN THE FIELD FOR A SIDE OR BOTTOM SPRING INLET.
2. SPRING INLET TYPE "A" SHALL BE USED WHEN FILL OVER TOP IS 10' OR MORE.

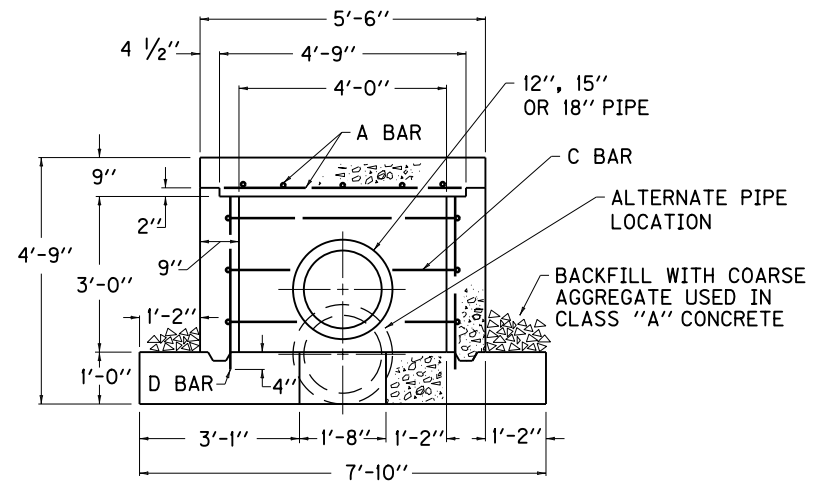


STEEL REINFORCEMENT			
NO. 4 STEEL BARS			TOTAL LBS.
BAR	QTY.	LIN. FT.	
A	10	4'-7"	105
C	6	9'-9"	
D	16	3'-4"	

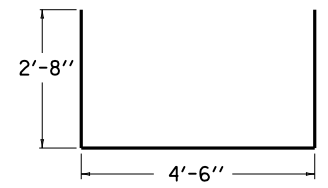
CLASS "A" CONCRETE	
PIPE DIA.	CU. YDS. CONCRETE
12"	4.61
15"	4.59
18"	4.58



SECTION B-B



SECTION A-A



C BAR DETAIL

KENTUCKY DEPARTMENT OF HIGHWAYS		
SPRING BOX INLET TYPE A		
STANDARD DRAWING NO. RDX-010-05		
SUBMITTED	<i>William P. Gullett</i> DIRECTOR, DIVISION OF DESIGN	12-01-15 DATE
APPROVED	<i>[Signature]</i> STATE HIGHWAY ENGINEER	12-01-15 DATE