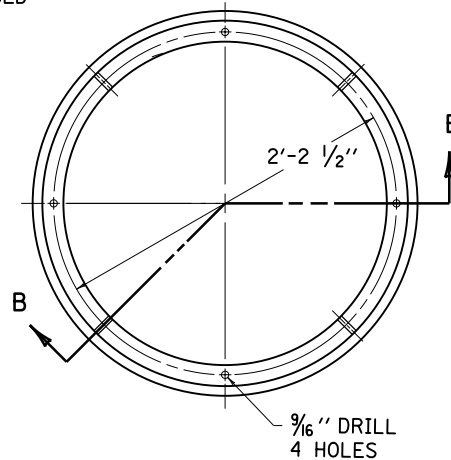
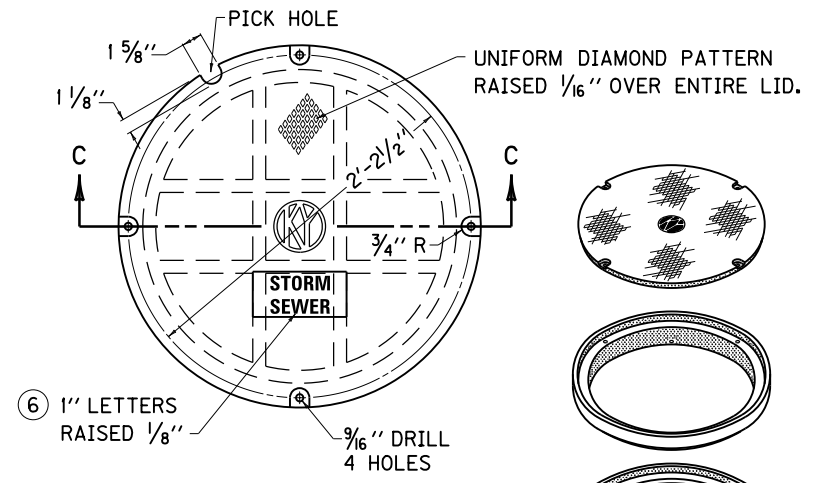


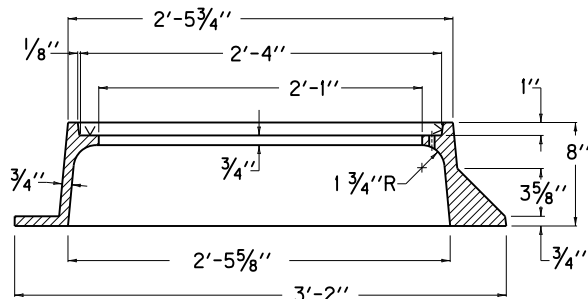
PLAN VIEW



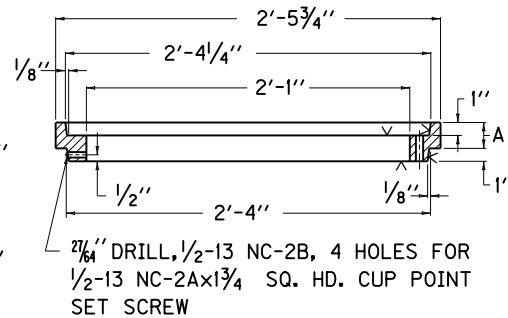
PLAN VIEW



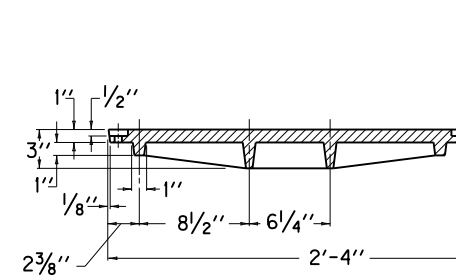
PLAN VIEW



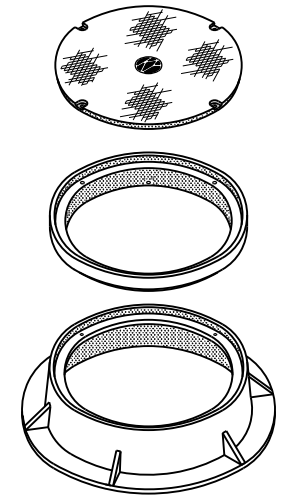
FRAME SECTION A-A



ADJUSTING RING SECTION B-B



LID SECTION C-C



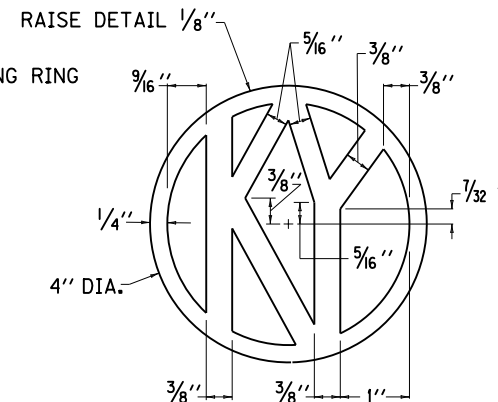
ISOMETRIC EXPLODED VIEW

DIMENSION	A (8)
	1 1/2"
	2"
	2 1/2"
	3"

APPROX. WEIGHT	
FRAME	270 LBS.
LID	240 LBS.

~ NOTES ~

- BID ITEM AND UNIT TO BID FRAME AND LID TY 2 EACH
- THE LID SHALL BE FASTENED WITH 1/2-13 NC-2Ax2 HEXAGON CAP SCREW. WHEN THE ADJUSTING RING IS USED ADD DIMENSION (A) SHOWN IN SECTION B-B TO THE LENGTH OF THE CAP SCREW.
- THE CAP SCREWS AND SET SCREWS SHALL BE STAINLESS STEEL, TYPES 302, 304, AND 430 CONFORMING TO ASTM A276.
- MANUFACTURER'S TOLERANCES WILL BE ACCEPTED ON ALL DIMENSIONS.
- ADJUSTING RINGS WHEN REQUIRED SHALL BE PAID FOR AT THE CONTRACT UNIT PRICE EACH AND SHALL INCLUDE THE NECESSARY HEX HEAD BOLTS AND SET SCREWS.
- THE "v" DENOTES MACHINED SURFACE.
- VARIATION IN LID LETTERING (SEE PIPE SUMMARY) DENOTES SEWER TYPE:  
 (A) STORM SEWER  
 (B) SANITARY SEWER  
 (C) SANITARY AND STORM SEWER
- THE "KY" SYMBOL SHALL APPEAR ON ALL LIDS.
- NET HEIGHT OF ADJUSTING RING (AS SPECIFIED IN CONTRACT).
- FRAME AND LID TYPE 2 SHALL BE USED IN VEHICULAR TRAFFIC AREAS.



DETAIL OF "KY" SYMBOL

KENTUCKY  
DEPARTMENT OF HIGHWAYS

FRAME AND LID  
TYPE 2

STANDARD DRAWING NO. RDM-105-03

SUBMITTED *William P. Gullett* DATE 12-01-15  
 DIRECTOR, DIVISION OF DESIGN

APPROVED *[Signature]* DATE 12-01-15  
 STATE HIGHWAY ENGINEER