

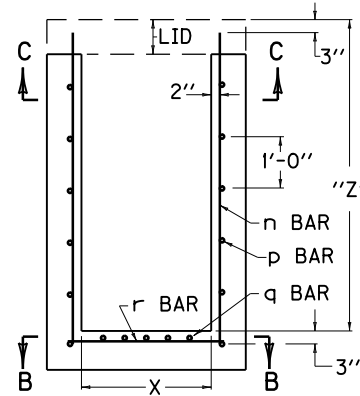
① ADDITIONAL STEEL REINFORCEMENT REQUIREMENTS
(PIPE CHAMBER, H = 8' TO 15')

SIZE ②		NO. 5 STEEL BARS									
X	Y	③ BAR n		④ BAR p		BAR q		BAR r		LBS. ⑤	
		QTY.	LIN. FT.	QTY.	LIN. FT.	QTY.	LIN. FT.	QTY.	LIN. FT.	TOTAL	⑥
2'-0"	2'-0"	20			10'-2"		2'-6"	4		220	31
	2'-6"	22			11'-2"		3'-0"	5		245	35
	3'-0"	24			12'-2"		3'-6"	6		269	38
	3'-6"	26	6'-0"	7	13'-2"	4	4'-0"	7	2'-6"	294	41
	4'-0"	28			14'-2"		4'-6"	8		318	44
	4'-6"	30			15'-2"		5'-0"	9		343	47
	5'-0"	32			16'-2"		5'-6"	10		367	50
2'-6"	2'-0"	22			11'-2"		2'-6"	4		245	35
	2'-6"	24			12'-2"		3'-0"	5		270	38
	3'-0"	26	6'-0"	7	13'-2"	5	3'-6"	6	3'-0"	296	41
	3'-6"	28			14'-2"		4'-0"	7		321	44
	4'-0"	30			15'-2"		4'-6"	8		347	47
	4'-6"	32			16'-2"		5'-0"	9		373	50
	5'-0"	34			17'-2"		5'-6"	10		398	53
3'-0"	2'-0"	24			12'-2"		2'-6"	4		268	38
	2'-6"	26			13'-2"		3'-0"	5		295	41
	3'-0"	28	6'-0"	7	14'-2"		3'-6"	6		321	44
	3'-6"	30			15'-2"	6	4'-0"	7	3'-6"	348	47
	4'-0"	32			16'-2"		4'-6"	8		374	50
	4'-6"	34			17'-2"		5'-0"	9		401	53
	5'-0"	36			18'-2"		5'-6"	10		427	57
3'-6"	2'-0"	26			13'-2"		2'-6"	4		293	41
	2'-6"	28			14'-2"		3'-0"	5		320	44
	3'-0"	30	6'-0"	7	15'-2"		3'-6"	6		348	47
	3'-6"	32			16'-2"	7	4'-0"	7	4'-0"	376	50
	4'-0"	34			17'-2"		4'-6"	8		404	53
	4'-6"	36			18'-2"		5'-0"	9		431	56
	5'-0"	38			19'-2"		5'-6"	10		459	60
4'-0"	2'-0"	28			14'-2"		2'-6"	4		317	44
	2'-6"	30			15'-2"		3'-0"	5		346	47
	3'-0"	32	6'-0"	7	16'-2"		3'-6"	6		374	50
	3'-6"	34			17'-2"	8	4'-0"	7	4'-6"	404	53
	4'-0"	36			18'-2"		4'-6"	8		432	56
	4'-6"	38			19'-2"		5'-0"	9		460	60
	5'-0"	40			20'-2"		5'-6"	10		490	63
4'-6"	2'-0"	30			15'-2"		2'-6"	4		342	47
	2'-6"	32			16'-2"		3'-0"	5		371	50
	3'-0"	34	6'-0"	7	17'-2"		3'-6"	6		401	53
	3'-6"	36			18'-2"	9	4'-0"	7	5'-0"	431	56
	4'-0"	38			19'-2"		4'-6"	8		460	60
	4'-6"	40			20'-2"		5'-0"	9		490	63
	5'-0"	42			21'-2"		5'-6"	10		519	66

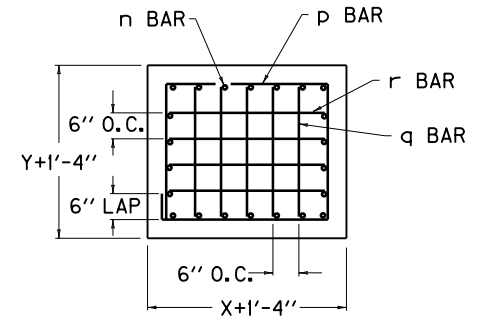
SIZE ②		NO. 5 STEEL BARS									
X	Y	③ BAR n		④ BAR p		BAR q		BAR r		LBS. ⑤	
		QTY.	LIN. FT.	QTY.	LIN. FT.	QTY.	LIN. FT.	QTY.	LIN. FT.	TOTAL	⑥
5'-0"	2'-0"	32			16'-2"		2'-6"	4		367	50
	2'-6"	34			17'-2"		3'-0"	5		398	53
	3'-0"	36	6'-0"	7	18'-2"		3'-6"	6		427	56
	3'-6"	38			19'-2"	10	4'-0"	7	5'-6"	459	60
	4'-0"	40			20'-2"		4'-6"	8		490	63
	4'-6"	42			21'-2"		5'-0"	9		519	66
	5'-0"	44			22'-2"		5'-6"	10		551	69

~ NOTES ~

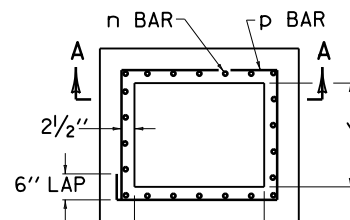
- ① BASED ON "Z" AS EQUAL TO 6'-0".
- ② SEE CUR. STD. DWGS. RDB-270 AND RDB-280 FOR LOCATION AND DIMENSIONS.
- ③ LENGTH OF "n" BAR IS ALWAYS SAME AS "Z" DIMENSION.
- ④ ADD OR SUBTRACT ONE "p" BAR PER EVEN FT. VARIANCE FROM 6'-0" "Z".
- ⑤ NO DEDUCTIONS HAVE BEEN MADE FOR PIPE.
- ⑥ ADD OR SUBTRACT LBS. STEEL PER FT. VARIANCE FROM 6'-0" "Z".
7. REINFORCEMENT SHALL HAVE A CLEAR DISTANCE OF 2" FROM THE FACE UNLESS OTHERWISE SHOWN.



SECTION A-A



SECTION B-B



SECTION C-C

(USE WITH C.B.I. A and C.B.I. B WHEN H = 8' to 15')

USE WITH CUR. STD. DWGS.
RDB-270, RDB-280

KENTUCKY	
DEPARTMENT OF HIGHWAYS	
BOX INLET	
PIPE CHAMBER	
(ADDITIONAL STEEL)	
STANDARD DRAWING NO. RDB-420-05	
SUBMITTED <i>William P. Gullett</i> DIRECTOR, DIVISION OF DESIGN	12-01-15 DATE
APPROVED <i>[Signature]</i> STATE HIGHWAY ENGINEER	12-01-15 DATE