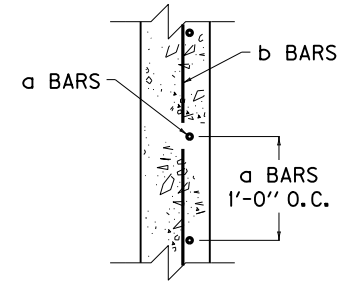
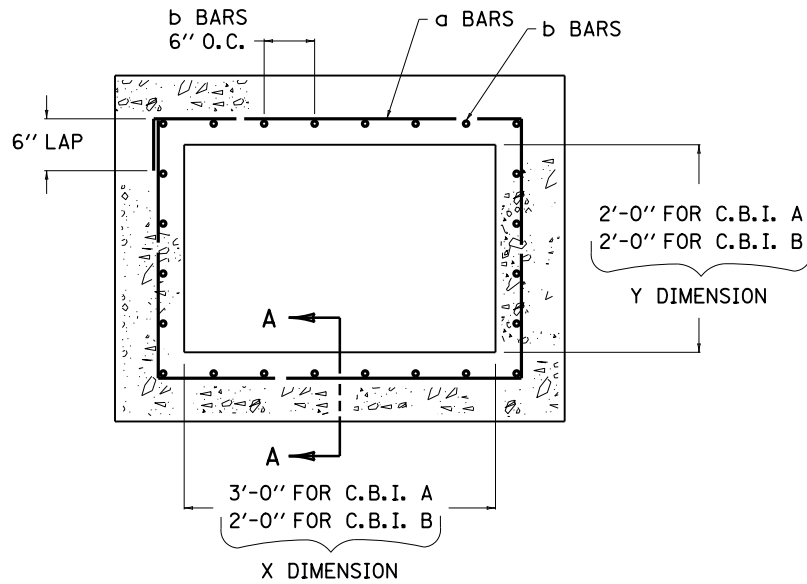


ADDITIONAL STEEL REQUIREMENTS FOR RISER  
(WHEN H = 8' TO 15')

~ NOTES ~

- ① USE WHEN "H" EXCEEDS 8'-0"
2. ALL REINFORCEMENT SHALL BE NO. 5 STEEL BARS.



SECTION A-A  
CURB BOX INLET TYPE A  
AND  
CURB BOX INLET TYPE B

(USE WITH C.B.I. A & C.B.I. B  
WHEN H = 8' TO 15')

① APPROXIMATE QUANTITIES PER ONE FT. IN HEIGHT	
C.B.I. A	C.B.I. B
LBS. STEEL	LBS. STEEL
38	31

<b>KENTUCKY</b>	
<b>DEPARTMENT OF HIGHWAYS</b>	
<b>BOX INLET RISER</b>	
STANDARD DRAWING NO. RDB-400-05	
SUBMITTED <i>William S. Gullett</i>	DATE 12-01-15
<small>DIRECTOR, DIVISION OF DESIGN</small>	
APPROVED <i>[Signature]</i>	DATE 12-01-15
<small>STATE HIGHWAY ENGINEER</small>	