

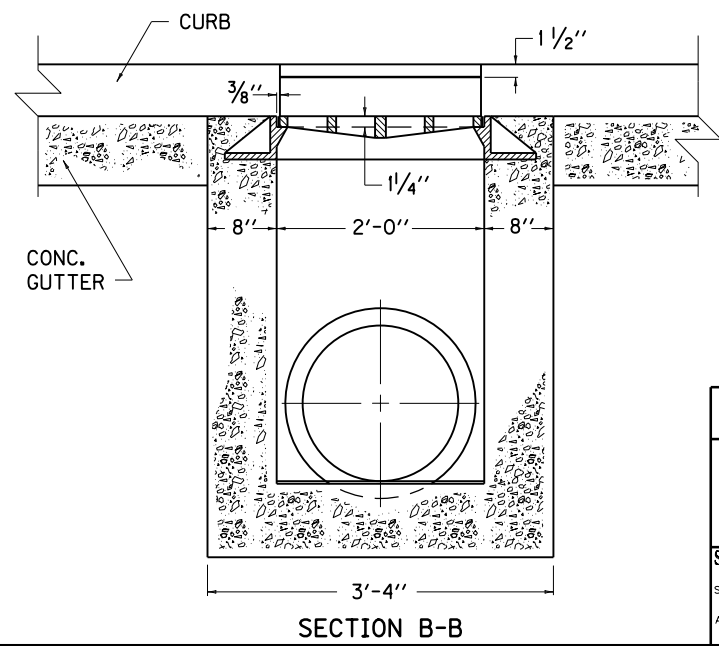
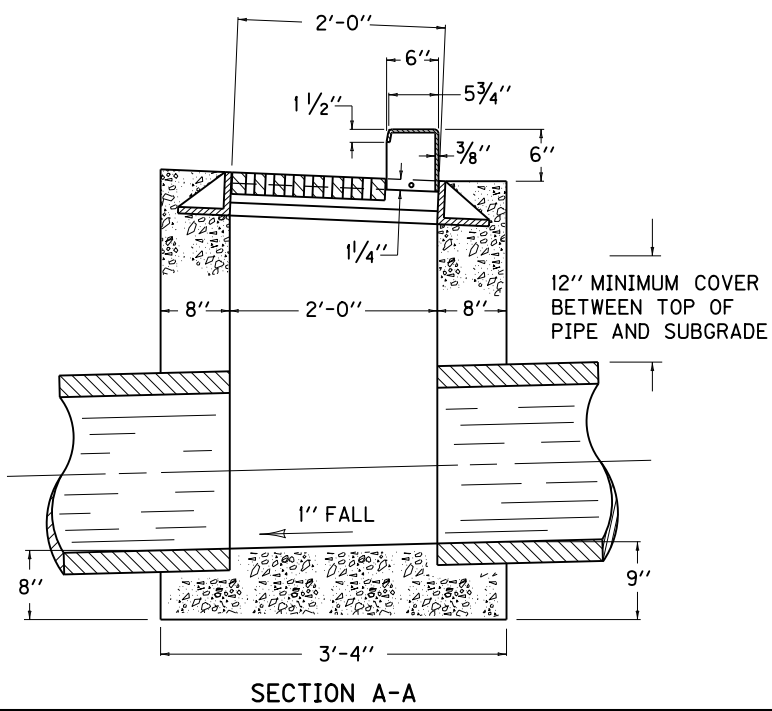
SUITABLE LUGS SHALL BE PROVIDED FOR SECURING CURB BOX.

APPROXIMATE QUANTITIES

PIPE SIZE	MIN. HEIGHT	CU. YDS. CONC.
15"	4'-0"	1.15
18"	4'-3"	1.22
CURB FRAME WEIGHT = 61 LBS.		
FRAME WEIGHT = 277 LBS.		
GRATE WEIGHT = 127 LBS.		

BID ITEM AND UNIT TO BID CURB BOX INLET TYPE F EACH

NO DEDUCTIONS HAVE BEEN MADE FOR PIPE.



KENTUCKY  
DEPARTMENT OF HIGHWAYS

CURB BOX INLET  
TYPE F

STANDARD DRAWING NO. RDB-320-06

SUBMITTED: *William S. Galles* 12-01-15  
DATE: 12-01-15  
DIRECTOR, DIVISION OF DESIGN

APPROVED: *[Signature]* 12-01-15  
DATE: 12-01-15  
STATE HIGHWAY ENGINEER