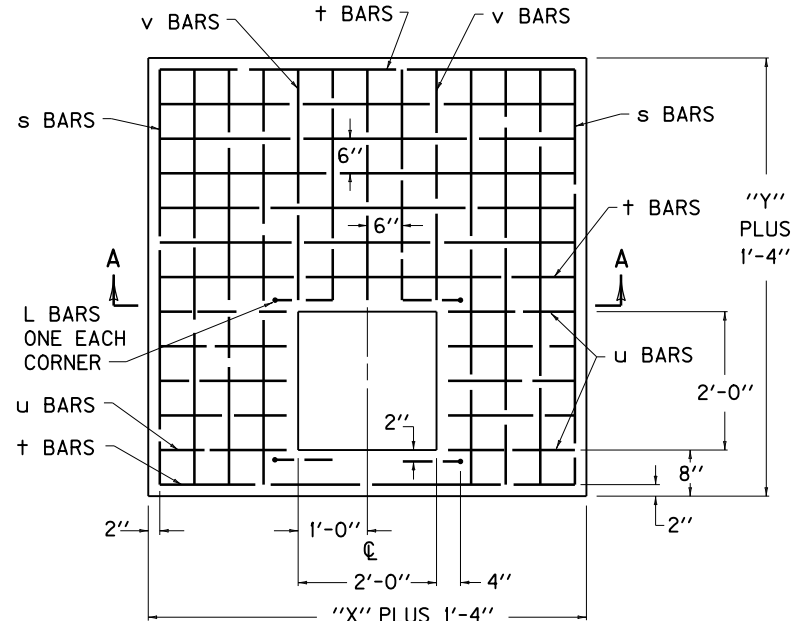


REINFORCEMENT STEEL FOR 8" LID

SIZE		NO. 5 STEEL BARS								LBS.
		BAR s		BAR †		BAR u		BAR v		
X	Y	QTY.	LIN. FT.	QTY.	LIN. FT.	QTY.	LIN. FT.	QTY.	LIN. FT.	
2'-0"	2'-0"	-	-	-	-	-	-	-	-	7
	2'-6"	4	3'-6"	6	3'-0"	-	-	10	0'-10"	49
	3'-0"		4'-0"	8					1'-4"	63
	3'-6"		4'-6"	10					1'-10"	76
	4'-0"		5'-0"	12					2'-4"	90
	4'-6"		5'-6"	14					2'-10"	103
5'-0"	6'-0"		16	3'-4"					117	
2'-6"	2'-0"	4	3'-0"	4	3'-6"	-	-	10	-	34
	2'-6"		3'-6"	6					0'-10"	52
	3'-0"		4'-0"	8					1'-4"	67
	3'-6"		4'-6"	10					1'-10"	81
	4'-0"		5'-0"	12					2'-4"	96
	4'-6"		5'-6"	14					2'-10"	111
3'-0"	2'-0"	8	3'-0"	4	4'-0"	20	0'-10"	10	-	66
	2'-6"		3'-6"	6					0'-10"	87
	3'-0"		4'-0"	8					1'-4"	105
	3'-6"		4'-6"	10					1'-10"	123
	4'-0"		5'-0"	12					2'-4"	141
	4'-6"		5'-6"	14					2'-10"	158
3'-6"	2'-0"	8	3'-0"	4	4'-6"	20	1'-1"	10	-	73
	2'-6"		3'-6"	6					0'-10"	96
	3'-0"		4'-0"	8					1'-4"	114
	3'-6"		4'-6"	10					1'-10"	133
	4'-0"		5'-0"	12					2'-4"	152
	4'-6"		5'-6"	14					2'-10"	171
4'-0"	2'-0"	12	3'-0"	4	5'-0"	20	1'-4"	10	-	93
	2'-6"		3'-6"	6					0'-10"	119
	3'-0"		4'-0"	8					1'-4"	141
	3'-6"		4'-6"	10					1'-10"	162
	4'-0"		5'-0"	12					2'-4"	184
	4'-6"		5'-6"	14					2'-10"	206
4'-6"	2'-0"	12	3'-0"	4	5'-6"	20	1'-7"	10	-	101
	2'-6"		3'-6"	6					0'-10"	127
	3'-0"		4'-0"	8					1'-4"	150
	3'-6"		4'-6"	10					1'-10"	173
	4'-0"		5'-0"	12					2'-4"	196
	4'-6"		5'-6"	14					2'-10"	219
5'-0"	2'-0"	16	3'-0"	4	6'-0"	20	1'-10"	10	-	120
	2'-6"		3'-6"	6					0'-10"	150
	3'-0"		4'-0"	8					1'-4"	176
	3'-6"		4'-6"	10					1'-10"	202
	4'-0"		5'-0"	12					2'-4"	228
	4'-6"		5'-6"	14					2'-10"	254
	5'-0"		6'-0"	16					3'-4"	280

~ NOTES ~

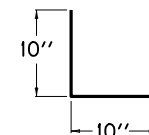
1. IN ADDITION TO THE CHARTED STEEL, FOUR "L" BARS ARE REQUIRED IN THE LID AND ARE INCLUDED IN THE TOTALS.
2. CONCRETE QUANTITIES FOR LID ARE INCLUDED ON "DIMENSIONS AND ESTIMATE OF QUANTITIES (PIPE CHAMBER)", SEE CUR. STD. DWG. RDB-410.
3. REINFORCEMENT SHALL HAVE A CLEAR DISTANCE OF 2" FROM THE OUTSIDE FACE UNLESS OTHERWISE SHOWN.



DETAIL OF 8" LID
PLAN VIEW



SECTION A-A



L BAR DETAIL

USE WITH CUR. STD. DWGS.
RDB-280, RDB-281, RDB-282,
RDB-400, RDB-410, RDB-420

KENTUCKY	
DEPARTMENT OF HIGHWAYS	
CURB BOX INLET	
TYPE B	
(DETAIL & BAR CHART FOR 8" LID)	
STANDARD DRAWING NO. RDB-283-04	
SUBMITTED <i>William S. Gullett</i>	DATE 12-01-15
<small>DIRECTOR, DIVISION OF DESIGN</small>	<small>DATE</small>
APPROVED <i>[Signature]</i>	DATE 12-01-15
<small>STATE HIGHWAY ENGINEER</small>	<small>DATE</small>