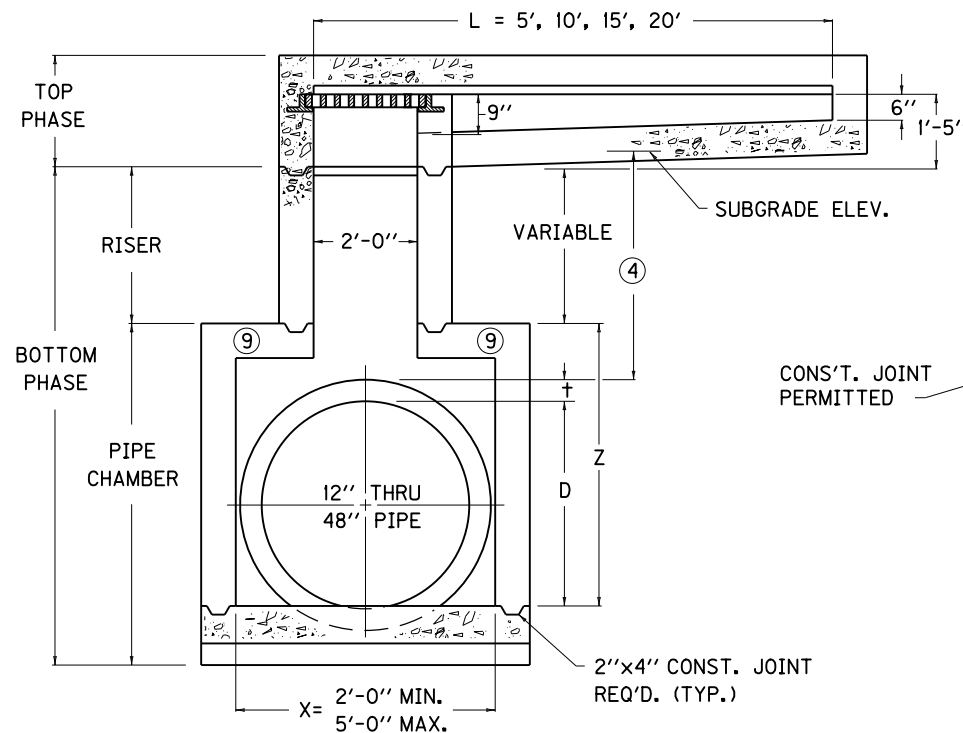
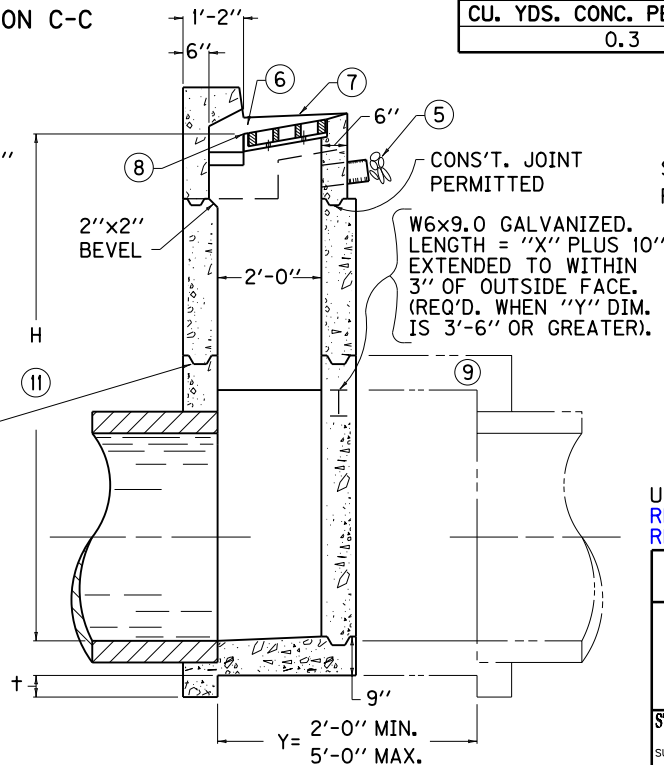


PLAN VIEW

SECTION C-C



SECTION A-A

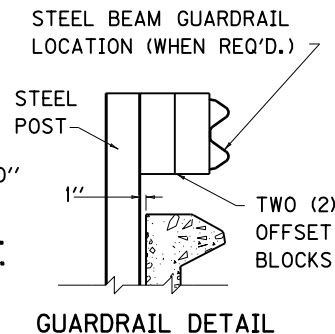


SECTION B-B

~ NOTES ~

- BID ITEM AND UNIT TO BID CURB BOX INLET TYPE B Δ EACH Δ (B) = BOTTOM PHASE ONLY Δ (T) = TOP PHASE ONLY NO SUFFIX INDICATES COMPLETE INLET.
- INLET SHALL BE CONSTRUCTED IN TWO PHASES (BOTTOM AND TOP).
 - SEE CUR. STD. DWGS. RDB-281, RDB-282, RDB-283, RDB-400, RDB-410, AND RDB-420 FOR STEEL PATTERN, DIMENSIONS AND QUANTITIES.
 - ALL WALLS, SLABS AND GUTTERS ARE 8" THICK UNLESS OTHERWISE INDICATED.
 - 24" DESIRED COVER, 12" MINIMUM COVER.
 - SPALLS OR CRUSHED STONE AROUND END OF A 4" OR 6" PIPE FOR SUBGRADE DRAINAGE.
 - 4" MINIMUM DRAWDOWN.
 - GUTTER CROSS SLOPE.
 - FLOW LINE (4" BELOW NORMAL GUTTERLINE ELEVATION).
 - LID MAY BE RAISED OR LOWERED IF APPROVED BY THE ENGINEER.
 - "t" IS CONCRETE PIPE WALL THICKNESS OR METAL PIPE CORRUGATION DEPTH.
 - MINIMUM HEIGHT $H = Z + 1'-4"$ FOR ALL CURB TYPES
 - SEE CUR. STD. DWG. RDB-282 FOR FRAME AND GRATE DETAIL.

RISER	
CU. YDS. CONC.	PER FT. HT.
0.3	



USE WITH CUR. STD. DWGS. RDB-281, RDB-282, RDB-283, RDB-400, RDB-410, RDB-420

KENTUCKY		
DEPARTMENT OF HIGHWAYS		
CURB BOX INLET		
TYPE B		
(DETAIL DRAWING)		
STANDARD DRAWING NO. RDB-280-06		
SUBMITTED	<i>William P. Gullett</i>	12-01-15
DATE	DIRECTOR, DIVISION OF DESIGN	DATE
APPROVED	<i>[Signature]</i>	12-01-15
DATE	STATE HIGHWAY ENGINEER	DATE