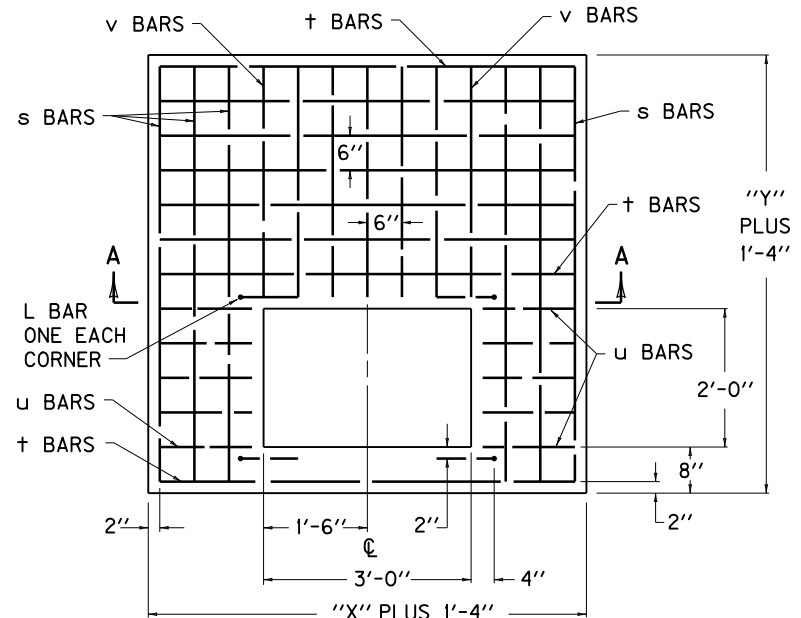


# REINFORCEMENT STEEL FOR 8" LID

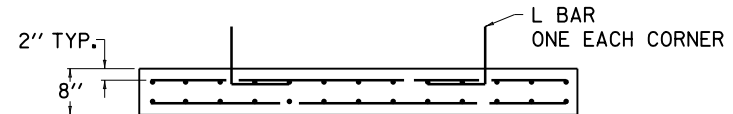
SIZE		NO. 5 STEEL BARS								LBS.
		BAR s		BAR †		BAR u		BAR v		
X	Y	QTY.	LIN. FT.	QTY.	LIN. FT.	QTY.	LIN. FT.	QTY.	LIN. FT.	
3'-0"	2'-0"	-	-	-	-	-	-	-	-	7
	2'-6"	4	3'-6"	6	4'-0"	-	-	0'-10"	59	
	3'-0"		4'-0"	8				1'-4"	77	
	3'-6"		4'-6"	10				1'-10"	94	
	4'-0"		5'-0"	12				2'-4"	112	
	4'-6"		5'-6"	14				2'-10"	130	
	5'-0"		6'-0"	16				3'-4"	147	
3'-6"	2'-0"	4	3'-0"	4	4'-6"	-	-	-	38	
	2'-6"		3'-6"	6				0'-10"	62	
	3'-0"		4'-0"	8				1'-4"	81	
	3'-6"		4'-6"	10				1'-10"	100	
	4'-0"		5'-0"	12				2'-4"	118	
	4'-6"		5'-6"	14				2'-10"	137	
	5'-0"	6'-0"	16	3'-4"	156					
4'-0"	2'-0"	8	3'-0"	4	5'-0"	20	0'-10"	-	70	
	2'-6"		3'-6"	6				0'-10"	97	
	3'-0"		4'-0"	8				1'-4"	119	
	3'-6"		4'-6"	10				1'-10"	141	
	4'-0"		5'-0"	12				2'-4"	163	
	4'-6"		5'-6"	14				2'-10"	185	
	5'-0"	6'-0"	16	3'-4"	207					
4'-6"	2'-0"	8	3'-0"	4	5'-6"	20	1'-1"	-	78	
	2'-6"		3'-6"	6				0'-10"	105	
	3'-0"		4'-0"	8				1'-4"	128	
	3'-6"		4'-6"	10				1'-10"	151	
	4'-0"		5'-0"	12				2'-4"	174	
	4'-6"		5'-6"	14				2'-10"	197	
	5'-0"	6'-0"	16	3'-4"	220					
5'-0"	2'-0"	12	3'-0"	4	6'-0"	20	1'-4"	-	97	
	2'-6"		3'-6"	6				0'-10"	127	
	3'-0"		4'-0"	8				1'-4"	154	
	3'-6"		4'-6"	10				1'-10"	180	
	4'-0"		5'-0"	12				2'-4"	207	
	4'-6"		5'-6"	14				2'-10"	233	
	5'-0"	6'-0"	16	3'-4"	259					

## ~ NOTES ~

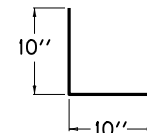
1. IN ADDITION TO THE CHARTED STEEL, FOUR "L" BARS ARE REQUIRED IN THE LID AND ARE INCLUDED IN THE TOTALS.
2. CONCRETE QUANTITIES FOR LID ARE INCLUDED ON "DIMENSIONS AND ESTIMATE OF QUANTITIES (PIPE CHAMBER)", SEE CUR. STD. DWG. RDB-410.
3. REINFORCEMENT SHALL HAVE A CLEAR DISTANCE OF 2" FROM THE OUTSIDE FACE UNLESS OTHERWISE SHOWN.



DETAIL OF 8" LID  
PLAN VIEW



SECTION A-A



L BAR DETAIL

USE WITH CUR. STD. DWGS.  
RDB-271, RDB-272, RDB-400,  
RDB-410, RDB-420, RDB-270

<b>KENTUCKY</b>	
<b>DEPARTMENT OF HIGHWAYS</b>	
<b>CURB BOX INLET</b>	
<b>TYPE A</b>	
(DETAIL & BAR CHART FOR 8" LID)	
STANDARD DRAWING NO. RDB-273-06	
SUBMITTED <i>William S. Gullett</i>	DATE 12-01-15
<small>DIRECTOR, DIVISION OF DESIGN</small>	
APPROVED <i>[Signature]</i>	DATE 12-01-15
<small>STATE HIGHWAY ENGINEER</small>	