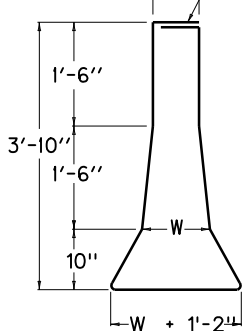
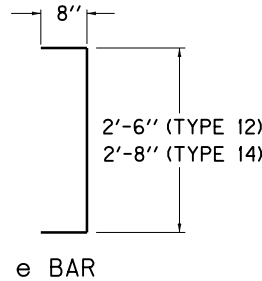


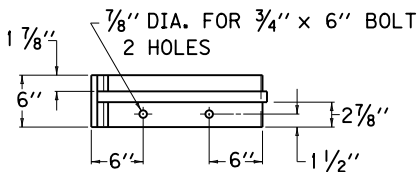
W MINUS 4"
LAP MAY BE AT TOP OR BOTTOM OR BOTH



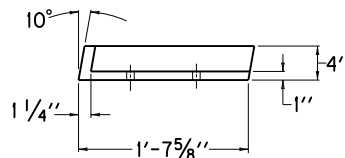
a BAR



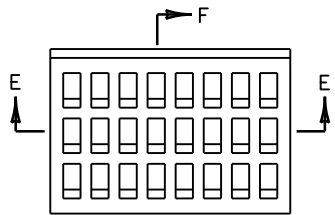
e BAR



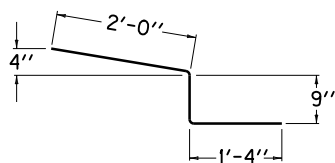
FRAME PLAN VIEW
(LEFT HALF)



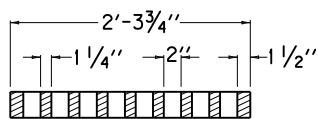
FRAME ELEVATION



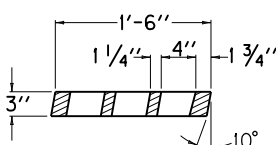
GRATE PLAN VIEW



m BAR



SECTION E-E



SECTION F-F

APPROX. QTYS. FOR 25' CONC. MEDIAN BARRIER

INLET	W	BAR a		BAR b		STEEL LBS. (8)	CONC. CU. YDS.
		QTY.	LENGTH	QTY.	LENGTH		
TYPE 12	12"	13	11'-6"	15	24'-8"	542	5.16
TYPE 14	14"	13	12'-0"	15	24'-8"	549	5.8

REINFORCEMENT BARS FOR BOX INLET

BAR	BOX TYPE							
	A1		A2		B1		B2	
	QTY.	LENGTH	QTY.	LENGTH	QTY.	LENGTH	QTY.	LENGTH
TYPE 12								
e	10	3'-9"	9	3'-9"				
TYPE 14								
e	10	3'-11"	9	3'-11"				
ALL TYPES								
d	12	4'-3"	6	7'-5"				
f	8	1'-0"	8	1'-0"				
g	2	6	4'-6"	1	5	4'-6"		
h	0	2	0	9'-8"	0	2	0	9'-8"
j	4	3'-3"	2	7'-0"				
k	4	8	2'-0"	4	8	2'-0"		
m	6	12	4'-1"	6	12	4'-1"		

~ NOTES ~

BID ITEM AND UNIT TO BID
CONC. MED BARR BOX INLET TY ☆ ⊗ ⊕ △ -50 EACH

☆ 12 OR 14 DEPENDING ON "W" WIDTH

⊗ = "A" FOR SAG VERTICALS

⊕ = "B" FOR STRAIGHT GRADE

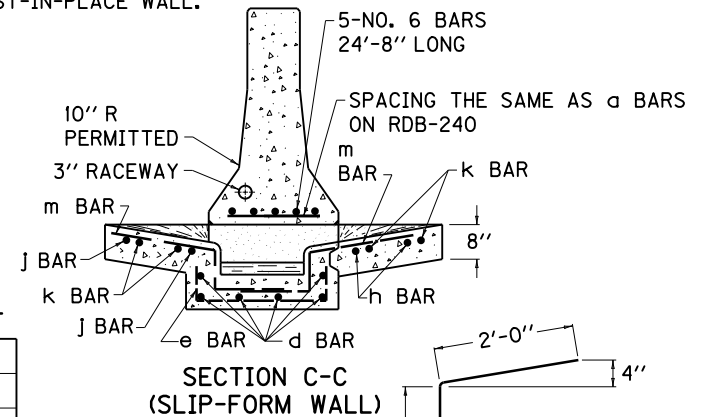
⊕ = 1 FOR OPENING ON ONE SIDE OF BOX INLET

⊕ 2 FOR OPENING ON BOTH SIDES OF BOX INLET

△ (b) = BOTTOM PHASE (+) = TOP PHASE

NO (b) OR (+) SUFFIX INDICATES COMPLETE INLET.

- ALL STEEL REINFORCEMENT BARS SHALL BE NO. 5 BARS.
- THE RATE OF INCREASE OF ADDITIONAL CLASS "A" CONCRETE PER FT. OF HEIGHT ABOVE THE MINIMUM 3'-10" SHALL BE 0.35 CU. YDS. FOR A TYPE 12 AND 0.37 CU. YDS. FOR A TYPE 14 BOX INLET.
- PLACE ALL STEEL REINFORCEMENT 2" MINIMUM FROM OUTSIDE FACE OF WALL, EXCEPT AS OTHERWISE SHOWN.
- SEE CUR. STD. DWG. RDB-420 FOR STEEL REINFORCEMENT IN BOTTOM OF BOX WHEN H = 8'-0" TO 15'-0".
- USE CHAMBER DIMENSIONS TO BEST FIT AND EQUALLY SPACE REINFORCEMENT STEEL.
- A SYMMETRICAL WALL IS DETAILED, AN ASYMMETRICAL WALL MAY BE REQUIRED (SEE PLANS).
- 2'-6" FOR MIN. HEIGHT OF 3'-10"
- STEEL QUANTITIES ARE FOR CAST-IN-PLACE WALL.



APPROX. QUANTITIES FOR INLET

TYPE	CLASS "A" CONC. CU. YDS.	STEEL
		LBS.
12A 1	3.96	158
12B 1	3.89	143
14A 1	4.09	159
14B 1	3.98	145

FOR APPROX. QUANTITIES FOR TYPE A2 OR B2 (ALL "W" WIDTHS) ADD 1.48 CU. YDS. CONCRETE AND 73 LBS. STEEL.

USE WITH CUR. STD. DWGS.
RDB-240, RDB-420

KENTUCKY
DEPARTMENT OF HIGHWAYS
CONCRETE MEDIAN
BARRIER BOX INLET
(50" TALL WALL
SLIP-FORM)

STANDARD DRAWING NO. RDB-241-02

SUBMITTED *Walter S. Gullett* 12-01-15
DATE
DESIGNED BY *Walter S. Gullett* 12-01-15
DATE
APPROVED *Walter S. Gullett* 12-01-15
DATE
STATE HIGHWAY ENGINEER