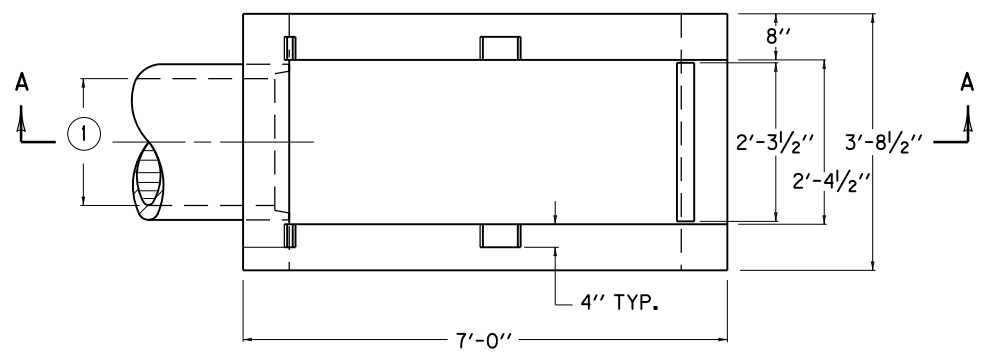


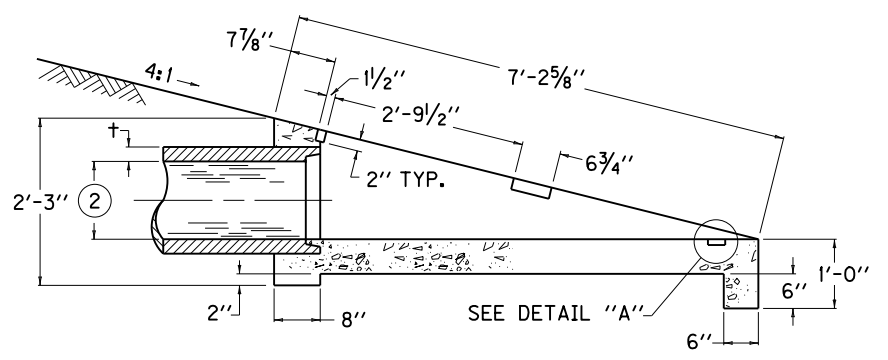
~ NOTES ~

BID ITEM AND UNIT TO BID  
SLOPED BOX INLET-OUTLET TYPE I EACH

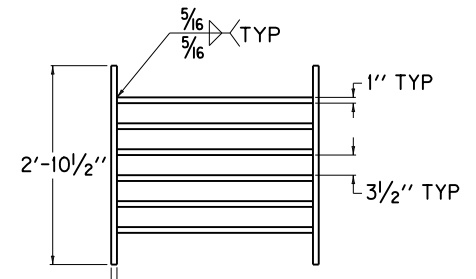
- ① INTERIOR SPAN
- ② INTERIOR RISE
- 3. THE UNIT PRICE BID FOR EACH STRUCTURE SHALL INCLUDE CONCRETE, STRUCTURAL STEEL GRATINGS, EXCAVATION, LABOR AND ALL INCIDENTALS NECESSARY FOR ITS CONSTRUCTION AS DETAILED ON THIS SHEET.
- 4. SIZE AND LOCATION OF PIPE SHALL BE SHOWN ON PLANS.
- 5. SLOPED BOX INLET OR OUTLET TYPE I IS INTENDED TO BE USED WITH THE FOLLOWING PIPE SIZES:  
METAL PIPE ARCH - ( 15" EQUIV. ROUND )  
METAL PIPE ARCH - ( 18" EQUIV. ROUND )  
CONCRETE ELLIPTICAL PIPE - ( 18" EQUIV. ROUND )



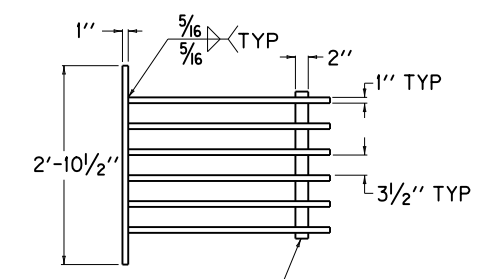
PLAN VIEW



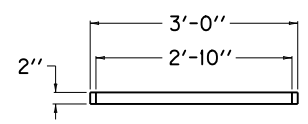
SECTION A-A



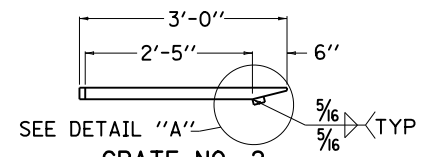
GRATE NO. 1  
PLAN VIEW



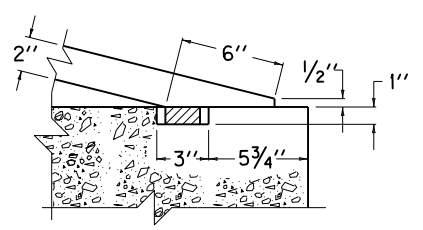
GRATE NO. 2  
PLAN VIEW



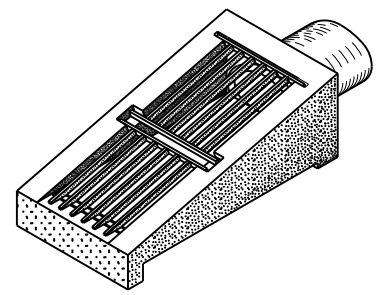
GRATE NO. 1  
SIDE ELEVATION



GRATE NO. 2  
SIDE ELEVATION



DETAIL "A"



ISOMETRIC VIEW

APPROXIMATE QUANTITIES				
CLASS "A" CONC.	GRATE	LBS STRUCTURAL STEEL		
		CU. YDS.	NUMBER	EACH GRATE
0.9	1		155	298
	2		143	

**KENTUCKY  
DEPARTMENT OF HIGHWAYS**

**SLOPED BOX  
INLET OR OUTLET  
TYPE I**

STANDARD DRAWING NO. RDB-110-08

SUBMITTED: *William P. Gullett* DATE: 12-01-15  
DIRECTOR, DIVISION OF DESIGN

APPROVED: *[Signature]* DATE: 12-01-15  
STATE HIGHWAY ENGINEER