

① ADDITIONAL STEEL REINFORCEMENT FOR PIPE CHAMBER
(H = 8' TO 15', GRADE CONDITION)

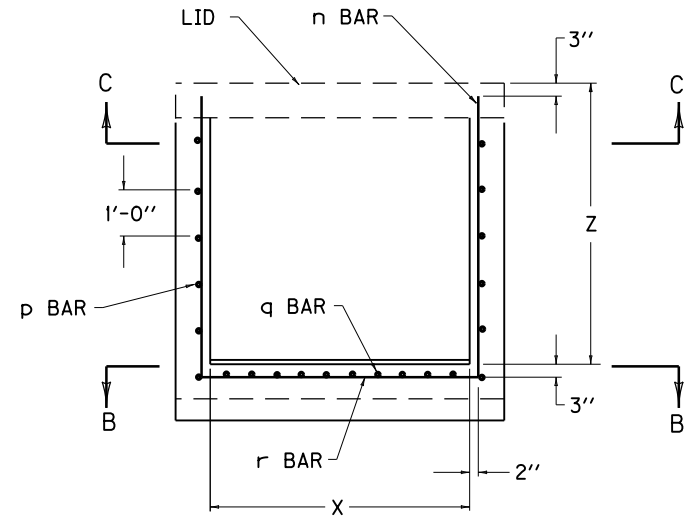
SIZE ②		NO. 5 STEEL BARS									
X	Y	BAR n ③		BAR p ④		BAR q		BAR r		LBS. ⑤	
		QTY.	LIN. FT.	QTY.	LIN. FT.	QTY.	LIN. FT.	QTY.	LIN. FT.	TOTAL	⑥
2'-3"	2'-0"	20		10'-9"	4	2'-6"	4	2'-9"	214	32	
	2'-6"	22		11'-9"	4	3'-0"	5		238	35	
2'-6"	2'-0"			11'-3"	5	2'-6"	4	3'-0"	234		
	2'-6"	24		12'-3"	6	3'-0"	5		258	38	
3'-0"	2'-0"			12'-3"	6	2'-6"	4	3'-6"	257		
	2'-6"	26	6'-0"	13'-3"	7	3'-0"	5		283	41	
3'-6"	2'-0"			13'-3"	7	2'-6"	4	4'-0"	281		
	2'-6"	28		14'-3"	8	3'-0"	5		307	44	
4'-0"	2'-0"			14'-3"	8	2'-6"	4	4'-6"	304		
	2'-6"	26		15'-3"	9	3'-0"	5		332	47	
4'-6"	2'-0"			15'-3"	9	2'-6"	4	5'-0"	328		
	2'-6"	30		16'-3"	10	3'-0"	5		356	50	
5'-0"	2'-0"			16'-3"	10	2'-6"	4	5'-6"	351		
	2'-6"	34		17'-3"	10	3'-0"	5		381	53	

① ADDITIONAL STEEL REINFORCEMENT FOR PIPE CHAMBER
(H = 8' TO 15', SAG CONDITION)

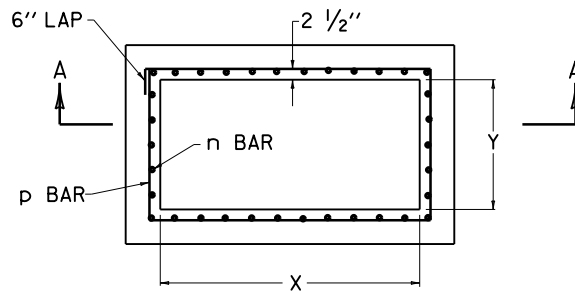
SIZE ②		NO. 5 STEEL BARS									
X	Y	BAR n ③		BAR p ④		BAR q		BAR r		LBS. ⑤	
		QTY.	LIN. FT.	QTY.	LIN. FT.	QTY.	LIN. FT.	QTY.	LIN. FT.	TOTAL	⑥
4'-11"	2'-0"	32	6'-0"	6	16'-1"	10	2'-6"	4	5'-5"	350	50
	2'-6"	34		6	17'-1"	10	3'-0"	5		379	53

~ NOTES ~

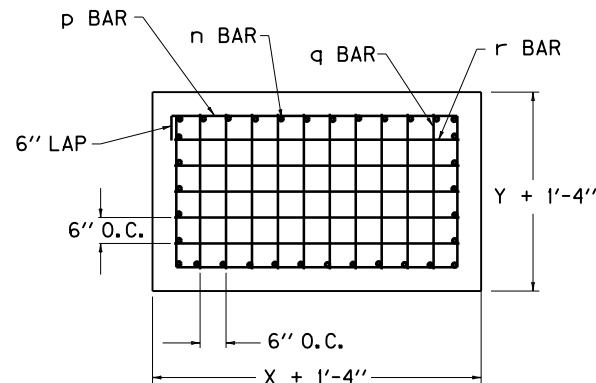
- ① BASED ON "Z" AS EQUAL TO 6'-0".
- ② SEE CUR. STD. DWG. RDB-030 FOR LOCATION AND DIMENSIONS.
- ③ LENGTH OF "n" BAR IS ALWAYS SAME AS "Z" DIMENSION.
- ④ ADD OR SUBTRACT ONE "p" BAR PER EVEN FT. VARIANCE FROM 6'-0" "Z".
- ⑤ NO DEDUCTIONS HAVE BEEN MADE FOR PIPE.
- ⑥ ADD OR SUBTRACT LBS. STEEL PER FT. VARIANCE FROM 6'-0" "Z".
7. REINFORCEMENT SHALL HAVE A CLEAR DISTANCE OF 2" FROM THE FACE UNLESS OTHERWISE SHOWN.



SECTION A-A



SECTION C-C



SECTION B-B

USE WITH CUR. STD. DWGS.
RDI-200, RDB-014, RDB-030,
RDB-031, RDB-032, RDB-033,
RDB-034

KENTUCKY	
DEPARTMENT OF HIGHWAYS	
DROP BOX INLET	
TYPE 16	
(ADDITIONAL STEEL- CHAMBER)	
STANDARD DRAWING NO. RDB-035-04	
SUBMITTED	DATE
<i>William S. Gullett</i>	12-01-15
<small>DIRECTOR, DIVISION OF DESIGN</small>	
APPROVED	DATE
<i>John</i>	12-01-15
<small>STATE HIGHWAY ENGINEER</small>	