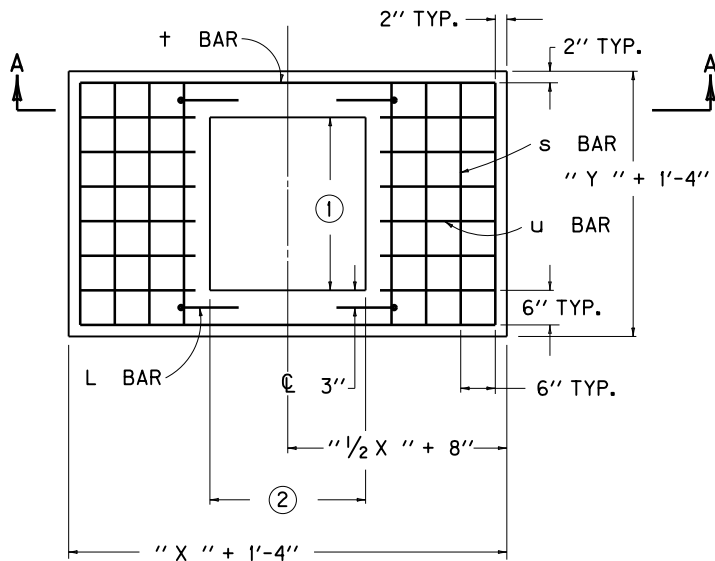


**REINFORCEMENT STEEL FOR 8" LID  
( GRADE CONDITION )**

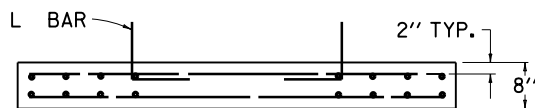
SIZE		NO. 5 STEEL BARS						LBS.
X	Y	BAR s		BAR †		BAR u		
		QTY.	LIN. FT.	QTY.	LIN. FT.	QTY.	LIN. FT.	
2'-3"	2'-0"	4	3'-0"	4	3'-3"	--	--	33
	2'-6"		3'-6"			--	--	35
2'-6"	2'-0"	8	3'-0"	4	3'-6"	--	--	47
	2'-6"		3'-6"			--	--	51
3'-0"	2'-0"	8	3'-0"	4	4'-0"	--	--	49
	2'-6"		3'-6"			--	--	53
3'-6"	2'-0"	12	3'-0"	4	4'-6"	20	0'-11"	82
	2'-6"		3'-6"			24	0'-11"	89
4'-0"	2'-0"	12	3'-0"	4	5'-0"	20	1'-2"	86
	2'-6"		3'-6"			24	1'-2"	101
4'-6"	2'-0"	16	3'-0"	4	5'-6"	20	1'-5"	110
	2'-6"		3'-6"			24	1'-5"	124
5'-0"	2'-0"	16	3'-0"	4	6'-0"	20	1'-8"	117
	2'-6"		3'-6"			24	1'-8"	132

~ NOTES ~

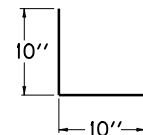
- ① 2'-0" FOR 12", 15", AND 18" OR 2'-6" FOR 24" SLOTTED DRAIN PIPE.
- ② DIMENSION VARIES DEPENDING UPON LOCATION OF BOX:  
GRADE CONDITION = 2'-3"  
SAG CONDITION = 4'-11"
3. IN ADDITION TO THE CHARTED STEEL, FOUR "L" BARS ARE REQUIRED IN THE LID AND ARE INCLUDED IN THE TOTALS.
4. CONCRETE QUANTITIES FOR LID ARE INCLUDED ON " DIMENSIONS AND ESTIMATE OF QUANTITIES FOR D.B.I. TYPE 16". SEE CUR. STD. DWG. [RDB-033](#)
5. LID REINFORCING STEEL NOT REQUIRED IN SAG LOCATION.
6. REINFORCEMENT SHALL HAVE A CLEAR DISTANCE OF 2" FROM THE OUTSIDE FACE UNLESS OTHERWISE SHOWN.



**DETAIL OF 8" LID  
PLAN VIEW**



**SECTION A-A**



**L BAR DETAIL**

USE WITH CUR. STD. DWGS.  
[RDI-200](#), [RDB-014](#), [RDB-030](#),  
[RDB-031](#), [RDB-033](#), [RDB-034](#),  
[RDB-035](#)

<b>KENTUCKY DEPARTMENT OF HIGHWAYS</b>	
<b>DROP BOX INLET TYPE 16</b>	
( DETAIL & BAR CHART FOR LID )	
STANDARD DRAWING NO. RDB-032-04	
SUBMITTED <i>William P. Gullett</i>	DATE 12-01-15
DIRECTOR, DIVISION OF DESIGN	
APPROVED <i>[Signature]</i>	DATE 12-01-15
STATE HIGHWAY ENGINEER	