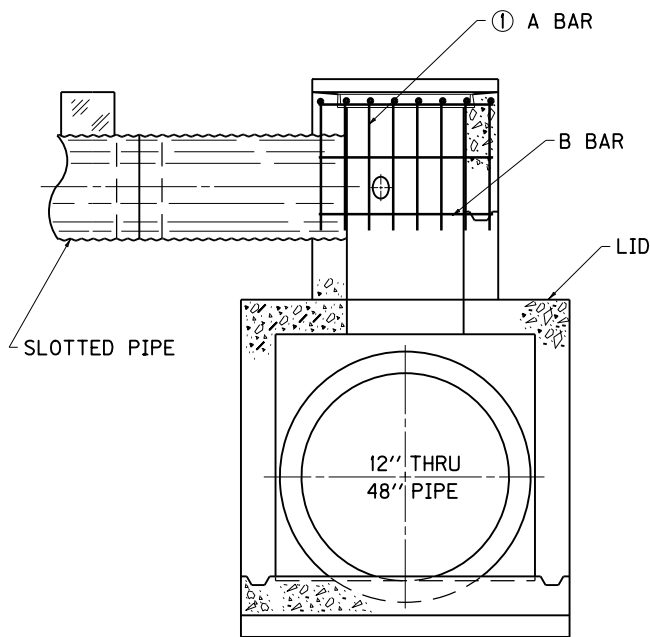


PLAN VIEW

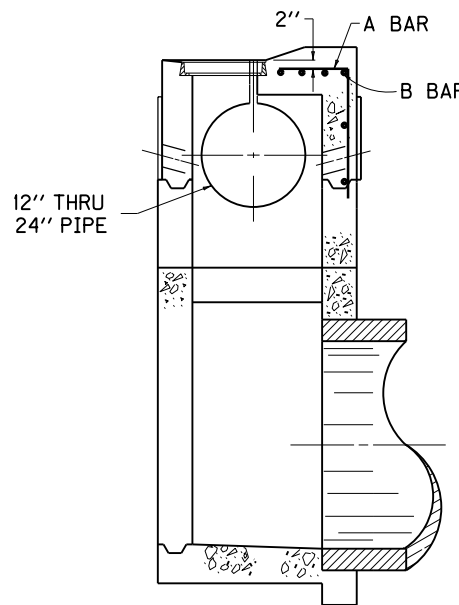
- ~ NOTES ~
- ① SLOTTED PIPE SIZE DENOTES WHICH "A" BAR TO USE, SEE STEEL CHART ON THIS DRAWING.
 2. SEE CUR. STD. DWG. RDB-032 FOR LID REINFORCEMENT.
 3. REINFORCEMENT SHALL HAVE A CLEAR DISTANCE OF 2" FROM THE OUTSIDE FACE UNLESS OTHERWISE SHOWN.
 4. SPACE "A" BARS APPROXIMATELY 6" CENTER TO CENTER.
 5. SPACE "B" BARS AS SHOWN.

STEEL REINFORCEMENT CHART

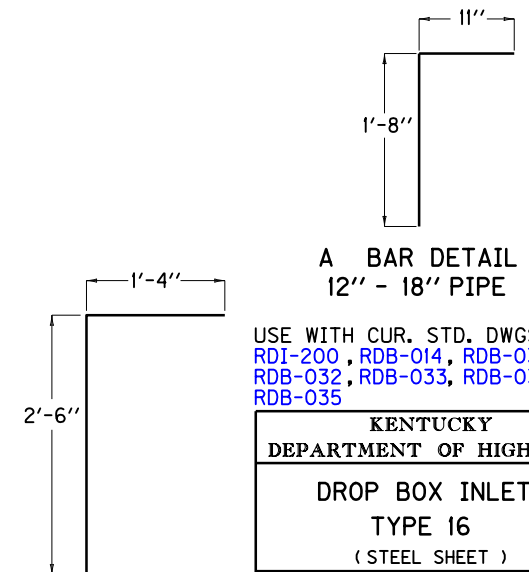
NO. 5 BAR	SLOTTED PIPE SIZE	CONDITION	QTY.	LGTH.	TOTAL LBS
A BAR	12" THRU 18"	GRADE	8	2'-7"	22
B BAR		GRADE	6	3'-3"	20
A BAR	18"	SAGE	13	2'-7"	35
B BAR		SAGE	6	5'-11"	37
A BAR	24"	GRADE	8	3'-10"	32
B BAR		GRADE	6	3'-3"	20
A BAR	24"	SAGE	13	3'-10"	52
B BAR		SAGE	6	5'-11"	37



SECTION A-A



SECTION B-B



A BAR DETAIL
12" - 18" PIPE

A BAR DETAIL
24" PIPE

USE WITH CUR. STD. DWGS.
RDI-200, RDB-014, RDB-030,
RDB-032, RDB-033, RDB-034,
RDB-035

KENTUCKY
DEPARTMENT OF HIGHWAYS

DROP BOX INLET
TYPE 16
(STEEL SHEET)

STANDARD DRAWING NO. RDB-031-04

SUBMITTED	<i>William P. Gullett</i>	DATE	12-01-15
APPROVED	<i>[Signature]</i>	DATE	12-01-15
	DIRECTOR, DIVISION OF DESIGN		
	STATE HIGHWAY ENGINEER		