

BID ITEM AND UNIT TO BID
 DROP BOX INLET TYPE 16 (Δ) (*)

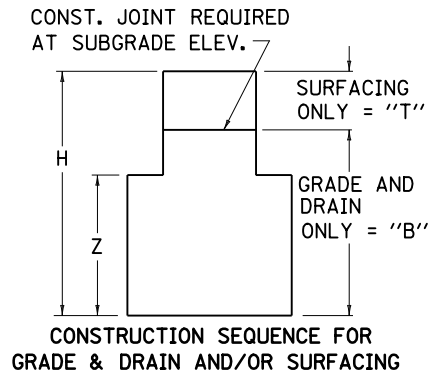
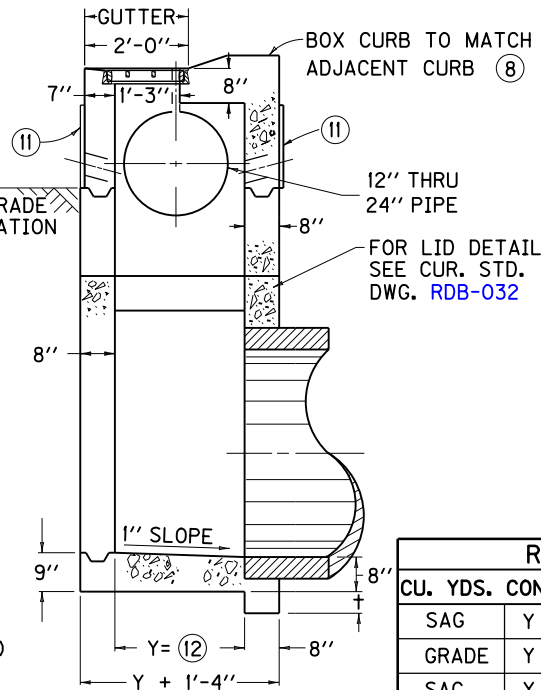
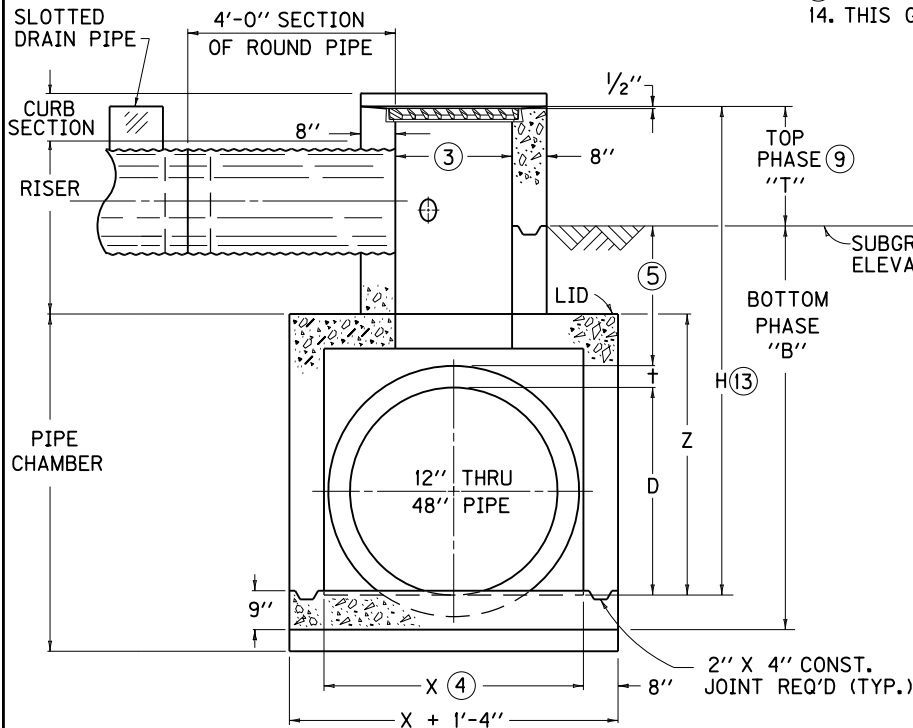
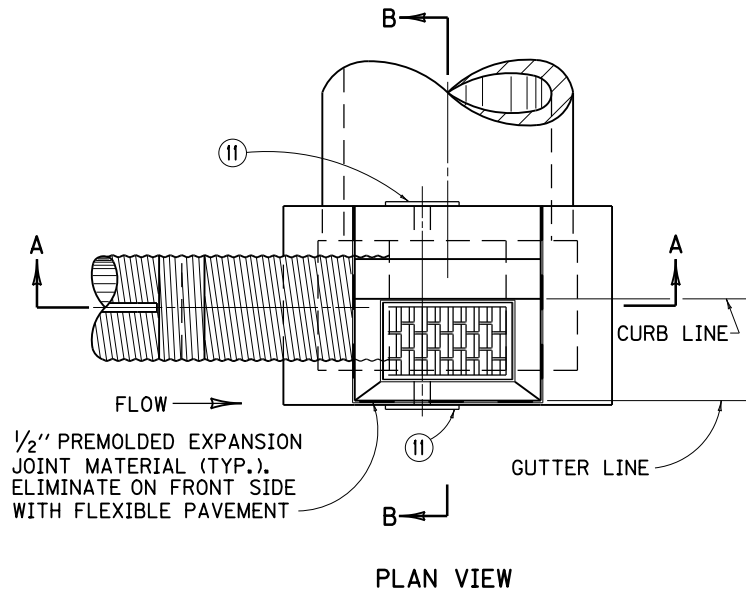
(Δ) = "S" (SAG CONDITION)
 (Δ) = "G" (GRADE CONDITION)
 (*) = "T" (TOP PHASE)
 (*) = "B" (BOTTOM PHASE)

~ NOTES ~

EACH

WITH NO "T" OR "B" SUFFIX A COMPLETE INLET IS REQUIRED.

1. BOX INLET MAY BE CONSTRUCTED IN TWO PHASES (BOTTOM AND TOP) AND MAY BE CONSTRUCTED IN A SAG VERTICAL CURVE OR ON GRADE.
2. FOR ILLUSTRATION PURPOSES THIS DRAWING DEPICTS A BOX LOCATED ON A GRADE CONDITION. SEE CUR. STD. DWG. [RDB-014](#), FOR DETAILS OF SAG AND GRADE CONDITIONS.
3. DIMENSION VARIES DEPENDING UPON LOCATION OF BOX: GRADE CONDITION = 2'-3", SAG CONDITION = 4'-11".
4. GRADE CONDITION: X = 2'-3" MIN. TO 5'-0" MAX., SAG CONDITION: X=4'-11".
5. 2'-0" DESIRED COVER, 1'-0" MIN. COVER OVER PIPE AND/OR LID.
6. "+" IS CONCRETE PIPE WALL THICKNESS OR METAL CORRUGATION DEPTH.
7. ALL WALLS AND SLABS ARE 8" THICK UNLESS OTHERWISE SHOWN.
8. THE CURB ON THE BOX SHALL BE CONSTRUCTED TO MATCH THE ADJOINING CURB WITH THE SAME CONSTRUCTION AND MATERIAL DETAILS (SEE CUR. STD. DWG. [RPM-100](#)). THIS DRAWING DEPICTS A LIP CURB APPLICATION.
9. THE TOP PHASE SHALL BE CAST AFTER THE ADJOINING CURB AND GUTTER HAVE BEEN CAST.
10. SEE CUR. STD. DWG. [RDB-014](#) FOR FRAME AND GRATE DETAIL. SEE CUR. STD. DWG. [RDB-031](#) FOR STEEL PATTERN. SEE CUR. STD. DWG. [RDB-033](#) FOR DIMENSIONS AND QUANTITIES.
11. FABRIC WRAPPED BACKFILL DRAIN, (ONE PER WEEP HOLE).
12. 2'-0" FOR 12", 15", AND 18" OR 2'-6" FOR 24" SLOTTED DRAIN PIPE.
13. MINIMUM HEIGHT FOR LONGITUDINAL PIPE SHALL BE H = 11" + INSIDE DIAMETER OF PIPE.
14. THIS GRATE IS BICYCLE FRIENDLY.



USE WITH CUR. STD. DWGS.
[RDB-014](#), [RDB-031](#), [RDB-032](#),
[RDB-033](#), [RDB-034](#), [RDB-035](#),
[RDI-200](#)

RISER		
CU. YDS.	CONC.	PER FT. HT.
SAG	Y = 2'-0"	0.4
GRADE	Y = 2'-0"	0.3
SAG	Y = 2'-6"	0.4
GRADE	Y = 2'-6"	0.3

KENTUCKY
 DEPARTMENT OF HIGHWAYS

**DROP BOX INLET
 TYPE 16**
 (DETAIL SHEET)

STANDARD DRAWING NO. [RDB-030-04](#)

SUBMITTED: *[Signature]* DATE: 12-01-15
DIRECTOR, DIVISION OF DESIGN

APPROVED: *[Signature]* DATE: 12-01-15
STATE HIGHWAY ENGINEER