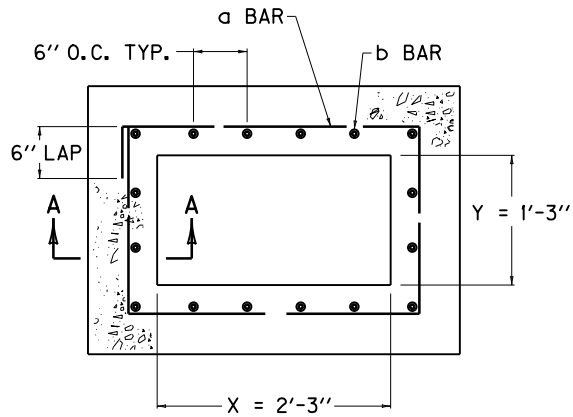
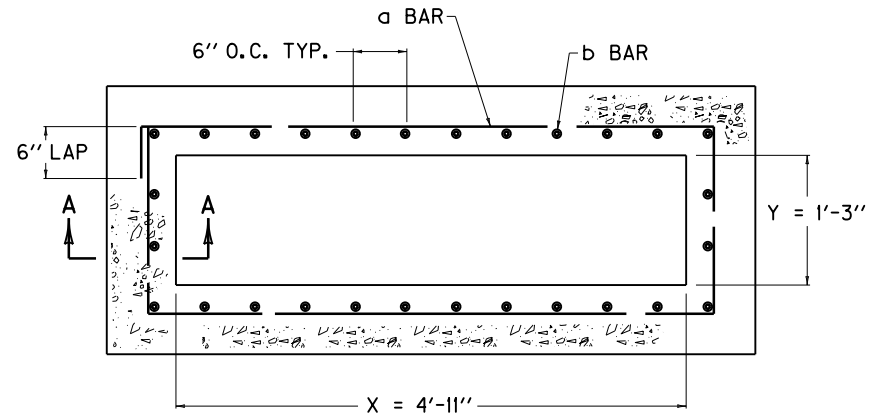


ADDITIONAL STEEL REINFORCEMENT REQUIREMENTS
(RISER, H = 8'-0" TO 15'-0", GRADE AND SAG CONDITION)



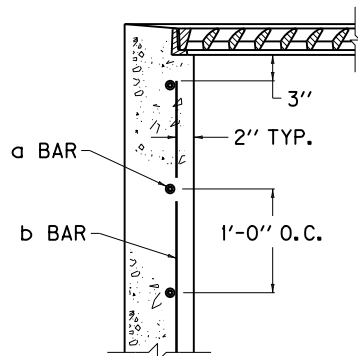
GRADE CONDITION



SAG CONDITION

~ NOTES ~

1. STEEL REINFORCEMENT SHALL HAVE A CLEAR DISTANCE OF 2" FROM THE FACE UNLESS OTHERWISE SHOWN.
2. ALL STEEL REINFORCEMENT SHALL BE NO. 5 BARS.



SECTION A-A

APPROXIMATE RISER QUANTITIES PER ONE FOOT IN HEIGHT							
COND- ITION	SIZE		BAR a		BAR b		LBS STEEL
	X	Y	QTY.	LIN. FT.	QTY.	LIN. FT.	
GRADE	2'-3"	1'-3"	3	9'-3"	16	1'-0"	26
SAG	4'-11"		3	14'-7"	28		44

USE WITH CUR. STD. DWGS.
RDB-013, RDB-014, RDB-015,
RDB-016, RDB-017, RDB-019,

KENTUCKY
DEPARTMENT OF HIGHWAYS

DROP BOX INLET
TYPE 13
(ADDITIONAL STEEL - RISER)

STANDARD DRAWING NO. RDB-018-04

SUBMITTED <i>William P. Galbraith</i>	DATE 12-01-15
<small>DIRECTOR, DIVISION OF DESIGN</small>	
APPROVED <i>[Signature]</i>	DATE 12-01-15
<small>STATE HIGHWAY ENGINEER</small>	<small>DATE</small>