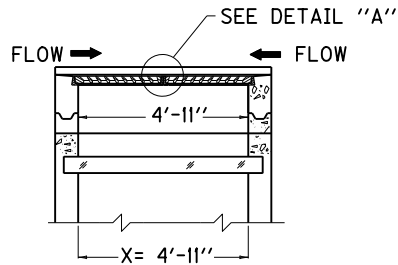


GRADE CONDITION

(1 GRATE & 1 FRAME REQ'D.)



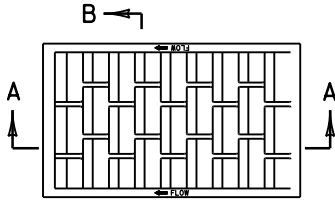
SAG CONDITION

(2 GRATES & 2 FRAMES REQ'D.)

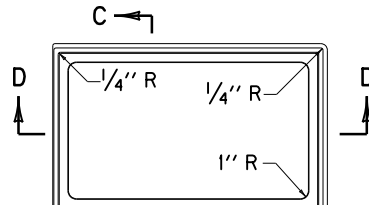
~ NOTES ~

1. ALL FILLETS AND ROUNDS SHALL BE $\frac{1}{8}$ " R.
2. THE FRAME AND GRATE SHALL BE MANUFACTURED OF CAST GRAY IRON CONFORMING TO ASTM A-48 CLASS 35B.

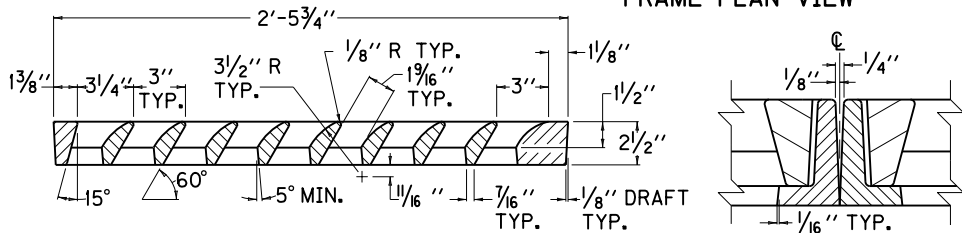
APPROX. WEIGHT	
1 GRATE	160 LBS.
1 FRAME	70 LBS.



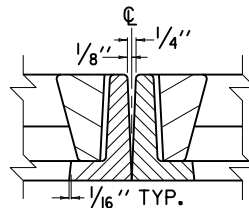
GRATE PLAN VIEW



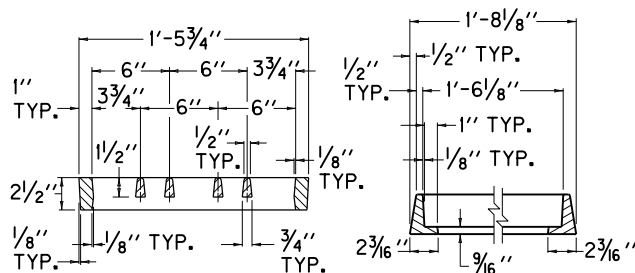
FRAME PLAN VIEW



SECTION A-A

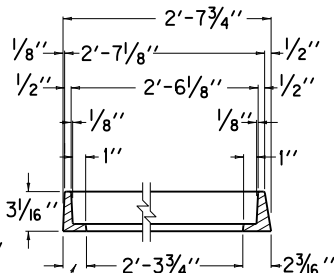


DETAIL "A"



SECTION B-B

SECTION C-C

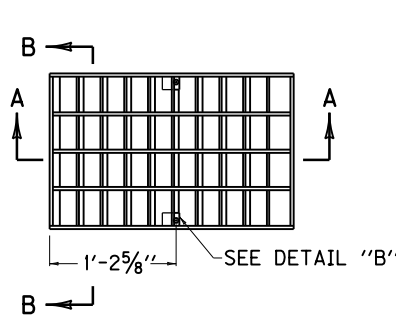


SECTION D-D

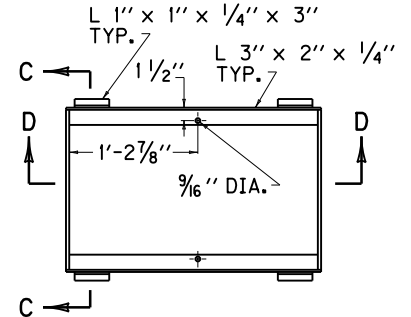
GRAY IRON CASTING

~ NOTES ~

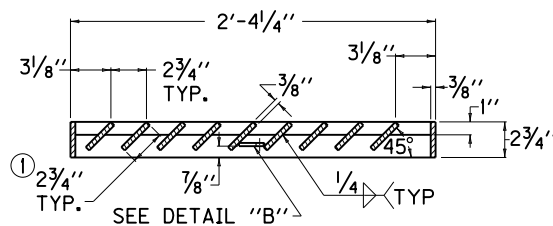
- ① THE $2\frac{3}{4}$ " BAR SHALL BE NOTCHED TO RECEIVE THE 1" BAR.
2. THE FRAME AND GRATE SHALL BE ASSEMBLED WITH 2 (TWO) $\frac{1}{2}$ " X $2\frac{1}{4}$ " STAINLESS HEX HEAD BOLTS AND NUTS (COMMERCIAL QUALITY).
- ③ ALL STRUCTURAL STEEL SHALL CONFORM TO ASTM A-36.



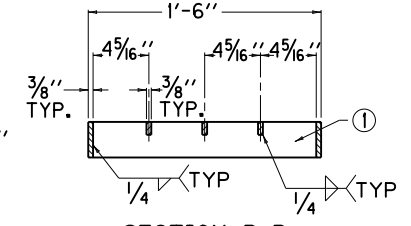
GRATE PLAN VIEW



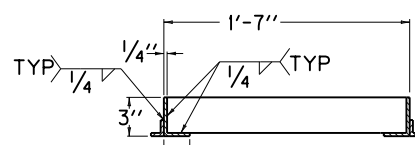
FRAME PLAN VIEW



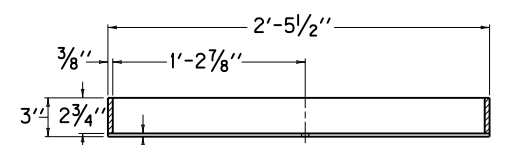
SECTION A-A



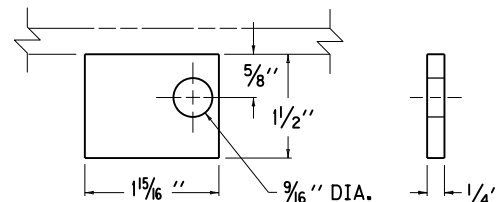
SECTION B-B



SECTION C-C



SECTION D-D



DETAIL "B"

③ STR. STEEL WTS.		
1 GRATE	TOTAL	1 FRAME
82 LBS.	126 LBS.	44 LBS.

STRUCTURAL STEEL

USE WITH CUR. STD. DWGS.
 RDB-013, RDB-015, RDB-016,
 RDB-017, RDB-018, RDB-019,
 RDB-030, RDB-031, RDB-032,
 RDB-033, RDB-034, RDB-035,

KENTUCKY DEPARTMENT OF HIGHWAYS	
DROP BOX INLET TYPE 13 AND TYPE 16 (FRAME AND GRATE DETAILS)	
STANDARD DRAWING NO. RDB-014-06	
SUBMITTED <i>William P. Gallego</i>	DATE 12-01-15
DESIGNED BY DIVISION OF DESIGN	DATE
APPROVED <i>[Signature]</i>	DATE 12-01-15
STATE HIGHWAY ENGINEER	DATE