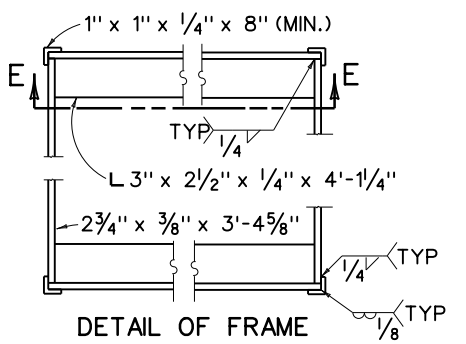
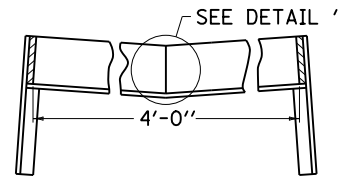


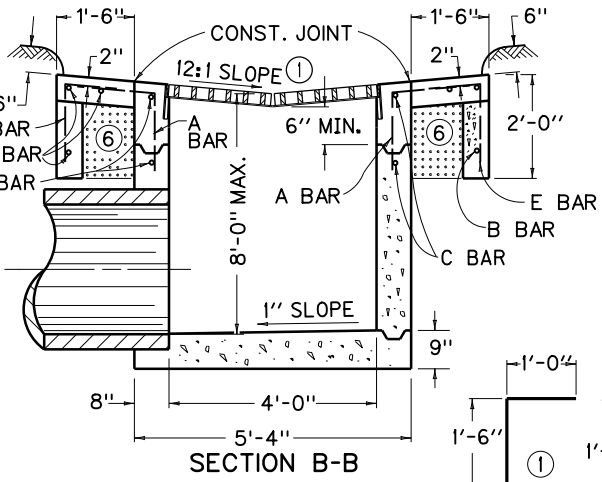
SECTION D-D
DETAIL OF GRATE
(TWO REQUIRED)



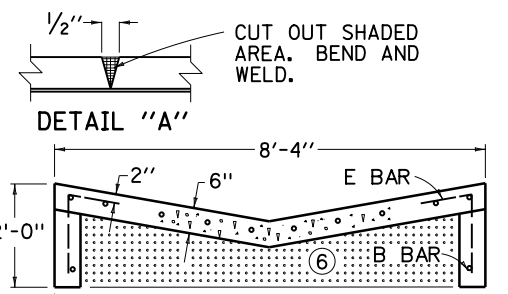
DETAIL OF FRAME



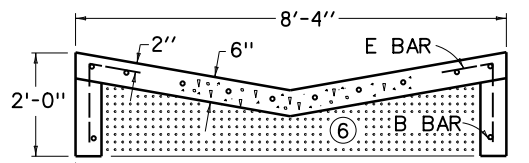
SECTION E-E
DETAIL OF FRAME



SECTION B-B



DETAIL "A"



SECTION C-C

BILL OF REINFORCEMENT

BAR	NO. OF BARS	SIZE	LENGTH
A	30 OR 38	#5	3'-0"
B	29 OR 36	#4	4'-8"
E	26 OR 24	#5	2'-6"

NOTE: PRIMARY USE (DEPRESSED MEDIAN)

~ NOTES ~

- BID ITEM AND UNIT TO BID
DROP BOX INLET TYPE 5 (A, B, C, D, E, F) EACH
- RELATES TO MEDIAN CROSS SLOPE - 5A=12:1, 5B=6:1, 5C=5:1, 5D=4:1, 5E=3:1, 5F EQUALS ANY ADDITIONAL SLOPE AS SPECIFIED BY THE ENGINEER
 - WHEN A BOX INLET IS PLACED IN A SAG CONSTRUCT APRON 4'-0" ON EACH SIDE AS SHOWN.
 - RATE OF INCREASE OR DECREASE 0.41 CU. YD. PER FT. IN HEIGHT.
 - DEDUCT APPROX. 0.10 CU. YD OF CONCRETE FOR 15", 18", 24" PIPE AND 0.20 CU. YD. OF CONCRETE FOR A 30" PIPE.
 - DETAILS ARE SHOWN FOR A TYPE 5A. IT IS NECESSARY TO REVISE VARIOUS DETAILS INCLUDING FRAME FOR TYPES B, C, D, E, AND F.
 - COMPACT THIS VOLUME WITH D.G.A. BASE OR GRAVEL BASE AND INCLUDE IN THE UNIT PRICE OF THE BOX.
 - WHEN D.B.I. TYPE 5 IS CONSTRUCTED IN CONJUNCTION WITH PAVED DITCH TYPE 3, SEE PAVED DITCH TYPE 3 DETAIL FOR ADDITIONAL STEEL REQUIREMENTS.

STR. STEEL WTS.		
1 GRATE	TOTAL	FRAME
198 LBS	396 LBS	64 LBS

APPROX. QUANTITIES		
TYPE	CONCRETE	REINF. STEEL
SAG	4.0 CU. YD. (4)	304 LBS
GRADE	3.4 CU. YD. (4)	262 LBS

KENTUCKY
DEPARTMENT OF HIGHWAYS

DROP BOX
INLET TYPE
5A-5B-5C-5D-5E & 5F

STANDARD DRAWING NO. RDB-005-09

SUBMITTED: *William P. Gullett* 12-01-15
DATE: 12-01-15
DESIGNED BY: *William P. Gullett*
APPROVED: *William P. Gullett* 12-01-15
DATE: 12-01-15
STATE HIGHWAY ENGINEER