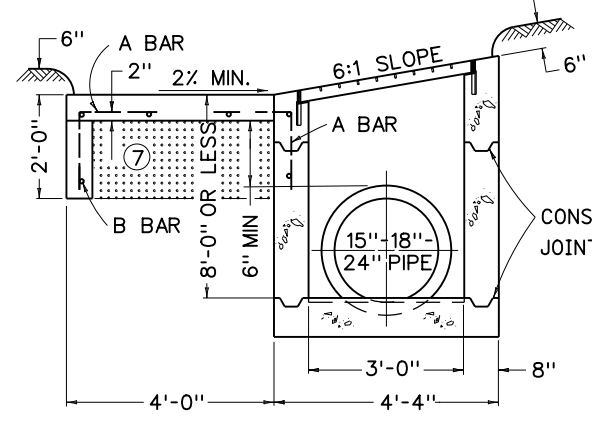
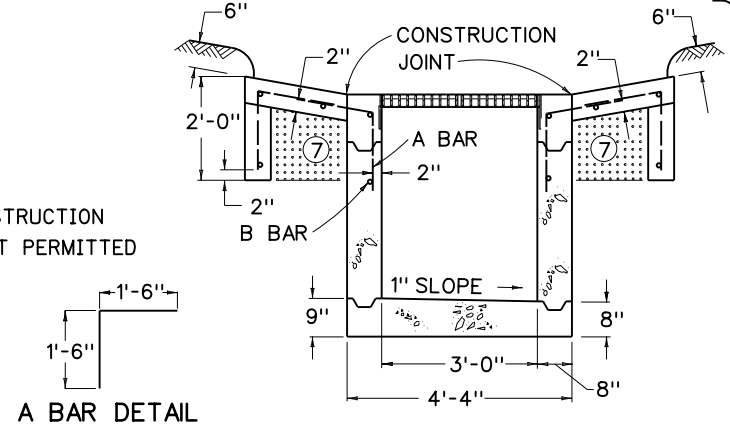


STR. STEEL WTS.		
1 GRATE	TOTAL	FRAME
138.5 LBS	277 LBS	51 LBS

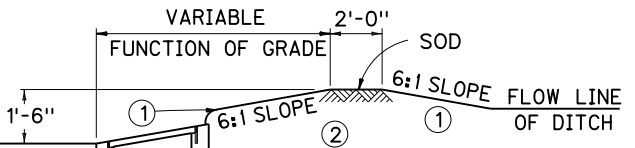
⑤ SECTION D-D
DETAIL OF GRATE
(TWO REQUIRED)



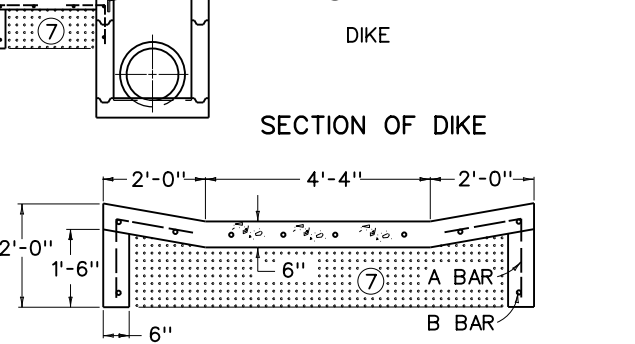
SECTION B-B



SECTION A-A



SECTION OF DIKE



SECTION C-C

BILL OF REINFORCEMENT

BAR	NO. OF BARS	SIZE	LENGTH	APPROX. SPACING
A	40 OR 56	*5	3'-0"	1'-0" C TO C
B	25 OR 40	*4	4'-0"	AS SHOWN

~ NOTES ~

- 1 6:1 SLOPES ARE WITH REFERENCE TO DITCH GRADE.
- 2 WHEN A BOX INLET IS PLACED IN A SAG, OMIT THE EARTH DIKE AND LONGITUDINAL SLOPE OF THE GRATE, AND PROVIDE A CONCRETE APRON ON EACH SIDE OF THE INLET.
- 3 RATE OF INCREASE OR DECREASE 0.36 CU. YD. PER FOOT IN HEIGHT.
- 4 DEDUCT APPROX. 0.1 CU. YD. OF CONCRETE PER PIPE.
- 5 RELIANCE STEEL (CAT. NO. H2-12D) AND GARY STEEL (CAT. NO. HW3-D-300) ARE ACCEPTABLE ALTERNATES PROVIDED MATCHED GRATES ARE SUPPLIED.
- 6 THE 2 3/4" BAR SHALL BE NOTCHED TO RECEIVE THE 1" BAR.
- 7 COMPACT THIS VOLUME WITH D.G.A. BASE OR GRAVEL BASE AND INCLUDE IN THE UNIT PRICE OF THE BOX.
8. DOWNSTREAM DIKE COMPLETE AND IN PLACE IS INCLUDED IN THE CONTRACT UNIT PRICE OF THE INLET. SODDING IS NOT INCLUDED.

NOTE: PRIMARY USE (ROADSIDE DITCH LOCATION)

APPROX. QUANTITIES

TYPE	CONCRETE	REINF. STEEL
3'-9" ③ BOX	4.4 CU. YD. ④	282 LBS
GRADE	3.4 CU. YD. ④	192 LBS

KENTUCKY
DEPARTMENT OF HIGHWAYS

DROP BOX
INLET
TYPE 3

STANDARD DRAWING NO. RDB-003-08

SUBMITTED *W. S. Galt* 12-01-15
DATE
APPROVED *W. S. Galt* 12-01-15
DATE
STATE HIGHWAY ENGINEER