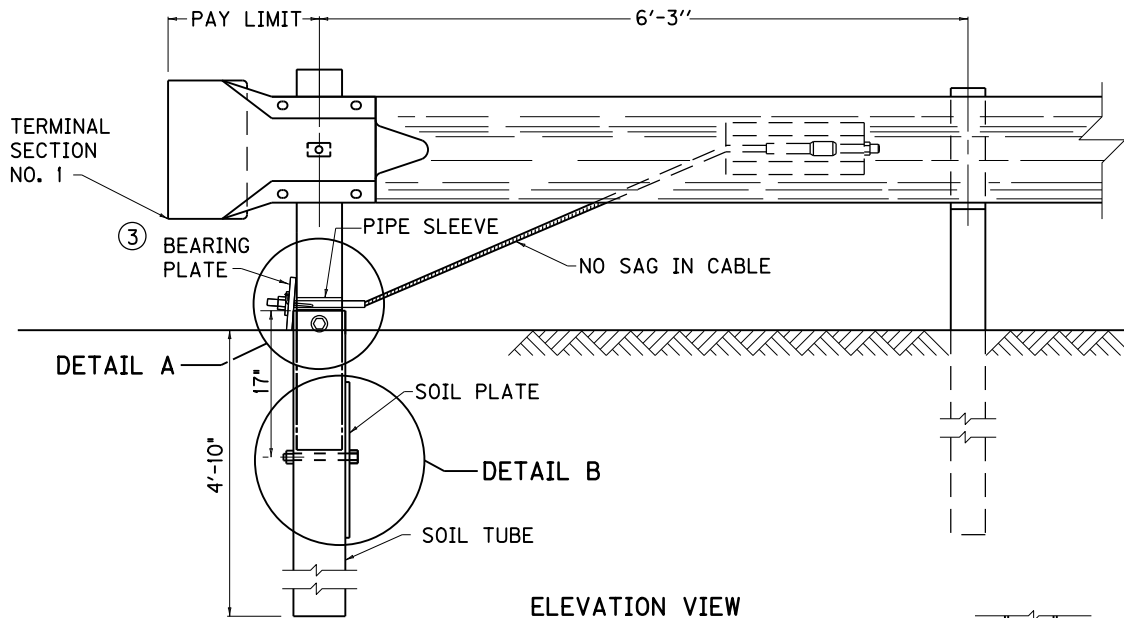
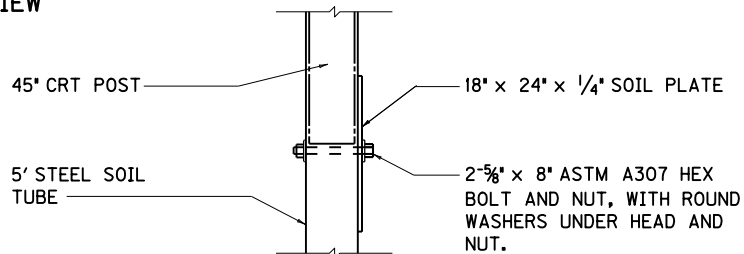


PLAN VIEW



ELEVATION VIEW



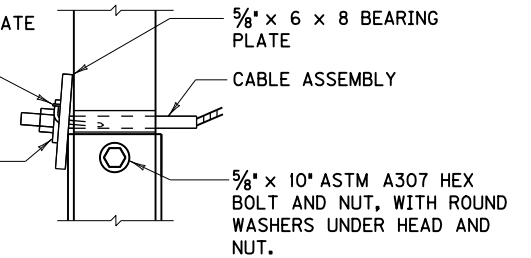
DETAIL B

~ NOTES ~

- BID ITEM AND UNIT TO BID
 GUARDRAIL END TREATMENT TYPE 2A EACH
1. GUARDRAIL END TREATMENT TYPE 2A SHALL BE TO THE PAY LIMITS AS DETAILED. THE CONTRACT UNIT BID IS EACH AND SHALL INCLUDE A TERMINAL SECTION NO. 1, RAIL ANCHOR ASSEMBLY, CABLE ANCHOR ASSEMBLY, SOIL TUBE, SOIL PLATE AND ALL OTHER INCIDENTALS NECESSARY FOR A COMPLETE INSTALLATION AS DETAILED.
 2. IN THE EVENT SOLID ROCK IS ENCOUNTERED, THE SOIL TUBE MAY BE SHORTENED, PROVIDED IT EXTENDS INTO THE SOLID GROUND A MINIMUM OF 3 FEET.
 - ③ INSTALL BEARING PLATE SO THAT THE "V" OPENING IS AT THE TOP.

2-16d NAILS TO PREVENT PLATE ROTATION (THRU 5/16" DIA. HOLES IN PLATE AND BENT)

3/8" x 3" x 4" PLATE WASHER



DETAIL A

USE WITH CUR. STD. DWGS.
 RBI-001, RBI-002, RBI-003
 RBR-010

KENTUCKY DEPARTMENT OF HIGHWAYS	
GUARDRAIL END TREATMENT TYPE 2A	
STANDARD DRAWING NO. RBR-025-05	
SUBMITTED <i>William P. Galt</i>	DATE 12-01-15
<small>DIRECTOR, DIVISION OF DESIGN</small>	
APPROVED <i>[Signature]</i>	DATE 12-01-15
<small>STATE HIGHWAY ENGINEER</small>	