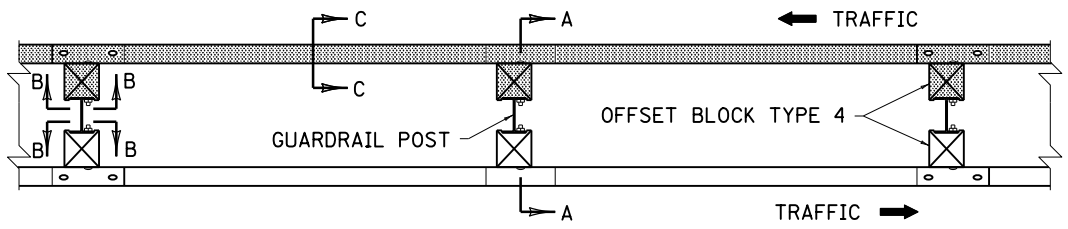
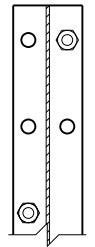


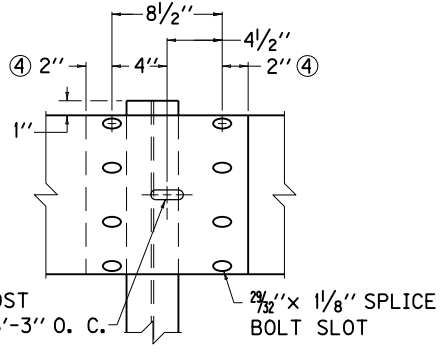
ELEVATION VIEW



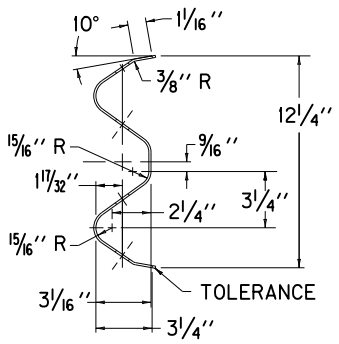
PLAN VIEW
(DOUBLE FACE RAIL OR SINGLE FACE RAIL)



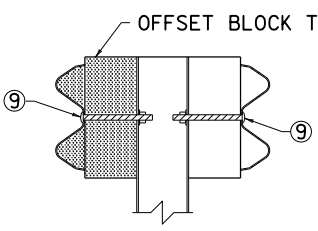
SECTION B-B



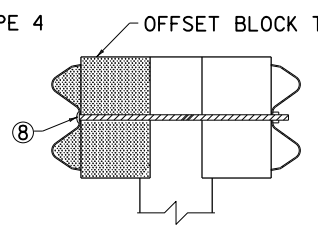
RAIL SPLICE ⑤



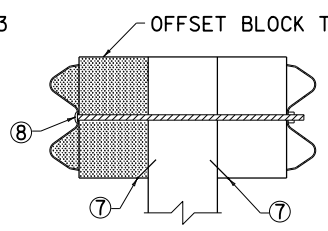
SECTION C-C
(RAIL CORRUGATED SHEET STEEL BEAM)



SECTION A-A
DOUBLE FACE RAIL WITH STEEL POST (W6x9) (TIMBER OFFSET BLOCK)



SECTION A-A
DOUBLE FACE RAIL WITH ROUND TIMBER POST



SECTION A-A
DOUBLE FACE RAIL WITH TIMBER POST

~ NOTES ~

- BID ITEM AND UNIT TO BID
GUARDRAIL-STEEL W BEAM-S FACE LF
OR
GUARDRAIL-STEEL W BEAM-D FACE LF
- 1. DIMENSIONAL TOLERANCES NOT SHOWN OR IMPLIED ARE INTENDED TO BE THOSE CONSISTENT WITH THE PROPER FUNCTIONING OF THE PART, INCLUDING ITS APPEARANCE AND ACCEPTED MANUFACTURING PRACTICES.
- 2. THE RAIL ELEMENT SHALL COMPLY WITH AASHTO M-180 -CLASS A, TYPE II.
- 3. ALL LAPS SHALL BE PLACED IN THE DIRECTION OF TRAFFIC FLOW.
- ④ TOLERANCE + 1/4", -1/4"
- ⑤ 8-5/8" x 1 1/4" LONG BUTTON HEAD BOLTS AND HEX HEAD RECESS NUTS REQUIRED FOR EACH RAIL SPLICE.
- ⑥ LENGTH EQUALS POST AND BLOCK WIDTH PLUS 2" FOR BOLT OR 2 1/4" FOR THREADED ROD.
- ⑦ GALVANIZED STEEL 10d COMMON COATED NAIL (DRIVE NAIL AT THE TOP OR BOTTOM CENTER OF BLOCK AND POST AFTER BOLT IS INSTALLED).
- ⑧ 5/8" x ⑥ STEEL THREADED ROD AND TWO (2) HEX HEAD NUTS OR 5/8" x ⑥ BUTTON OR HEX HEAD BOLT AND HEX HEAD NUT.
- ⑨ 5/8" x 8" BUTTON HEAD BOLT, HEX HEAD RECESS NUT AND ONE 5/8" ROUND WASHER (TYP.). BOLT SHALL HAVE A MINIMUM THREAD LENGTH OF 2".
 REQUIRED FOR DOUBLE RAIL
- 10. BOTH 12'-6" AND 25' LENGTHS OF "W" BEAM GUARDRAIL SECTIONS WILL BE PERMITTED UNLESS OTHERWISE DIRECTED BY THE ENGINEER.

KENTUCKY DEPARTMENT OF HIGHWAYS		
STEEL BEAM GUARDRAIL ("W" BEAM)		
STANDARD DRAWING NO. RBR-001-12		
SUBMITTED <i>W. P. Hall</i>	DATE	12-01-15
DIRECTOR, DIVISION OF DESIGN		
APPROVED <i>[Signature]</i>	DATE	12-01-15
STATE HIGHWAY ENGINEER		