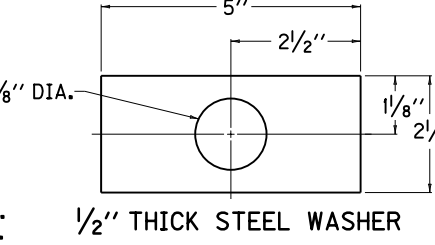


- ~ NOTES ~
- BID ITEM AND UNIT TO BID CONCRETE BARRIER WALL TYPE 9T LF
- 2" DIA. LIFTING HOLE - 2 REQUIRED FOR EACH SECTION. FORMED WITH 2" P.V.C. PIPE OR EQUAL.
 - TAPER NOT INCLUDED IN BASE WIDTH.
 - SHOP DRAWINGS SHALL BE APPROVED PRIOR TO MANUFACTURE.
 - BASED ON 150 LBS./CU. FT.
 - PLACE ALL STEEL REINFORCEMENT A CLEAR DISTANCE OF 2" MIN. FROM OUTSIDE FACE OF WALL, EXCEPT WHERE SHOWN OTHERWISE.
 - LIFTING BARS SHALL BE REQUIRED TO PREVENT SPALLING OF CONCRETE AROUND HOLES.
 - PREVIOUS WALL MANUFACTURED ACCORDING TO STANDARD DRAWING RBM-115-07 MAY STILL BE USED. ANY NEW BARRIER WALL TYPE 9T MANUFACTURED SHALL COMPLY TO THIS STANDARD DRAWING.
 - A PERMISSIBLE ALTERNATE FOR THE PIN AND LOOP CONNECTOR IS JJ HOOK MANUFACTURED BY EASI-SET INDUSTRIES OUT OF MIDLAND, VA. SEE MANUFACTURER'S SHOP DRAWINGS FOR DETAILS ON JJ HOOK CONNECTOR AND RECOMMENDED REINFORCEMENT. THE BARRIER WALL'S DIMENSIONS, SHAPE, LENGTH AND THE DRAIN SLOT DIMENSIONS AND LOCATIONS SHALL MATCH THIS DRAWINGS CURRENT DIMENSIONS. ① ⑥



APPROXIMATE QUANTITIES

| 20' | | | |
|--------|-------------|----------|--|
| REINF. | CONC. | WEIGHT ④ | |
| LBS. | CU. YD./FT. | TONS | |
| 195 | 0.12 | 5.0 | |

USE WITH CUR. STD. DWG. RBM-120

KENTUCKY DEPARTMENT OF HIGHWAYS

CONCRETE BARRIER WALL TYPE 9T (TEMPORARY)

STANDARD DRAWING NO. RBM-115-10

SUBMITTED *William P. Gullett* 12-01-15
DIRECTOR, DIVISION OF DESIGN DATE

APPROVED *[Signature]* 12-01-15
STATE HIGHWAY ENGINEER DATE