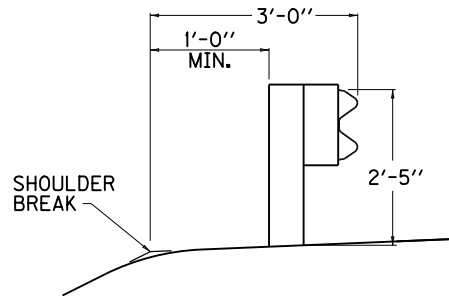
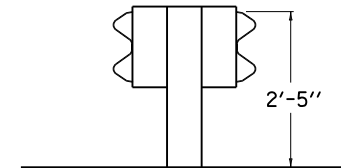


APPROACH ROADS

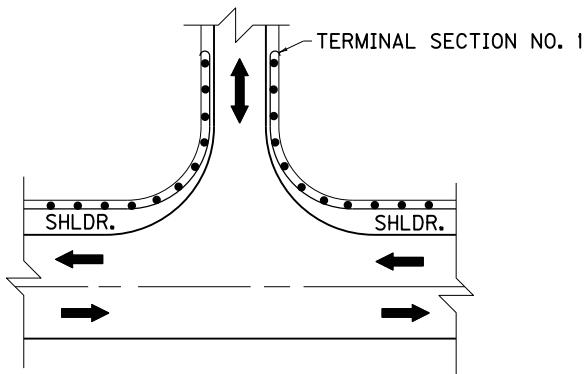
- ~ NOTES ~
1. FOR END TREATMENT TYPE 4A USE CUR. STD. DWG. [RBR-035](#) FOR OFFSETS.
  2. THE MINIMUM LENGTH OF GUARDRAIL, INCLUDING THE END TREATMENT, PRECEDING A FIXED OBJECT IS 200 FEET; (LENGTH MAY BE REDUCED SHOULD FIELD CONDITIONS WARRANT).



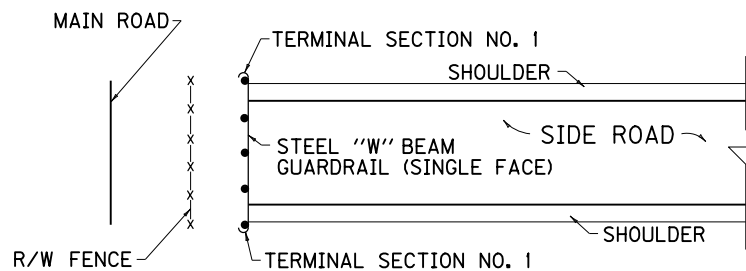
NORMAL GUARDRAIL INSTALLATION



TYPICAL DOUBLE FACE GUARDRAIL INSTALLATION



ENTRANCES



GUARDRAIL USED AS A BARRICADE

USE WITH CUR. STD. DWG.  
[RBI-002](#), [RBR-035](#)

**KENTUCKY  
DEPARTMENT OF HIGHWAYS**

**TYPICAL GUARDRAIL  
INSTALLATIONS**

STANDARD DRAWING NO. RBI-001-11

SUBMITTED *William S. Gullett* 12-01-15  
DATE DIRECTOR, DIVISION OF DESIGN

APPROVED *[Signature]* 12-01-15  
DATE STATE HIGHWAY ENGINEER