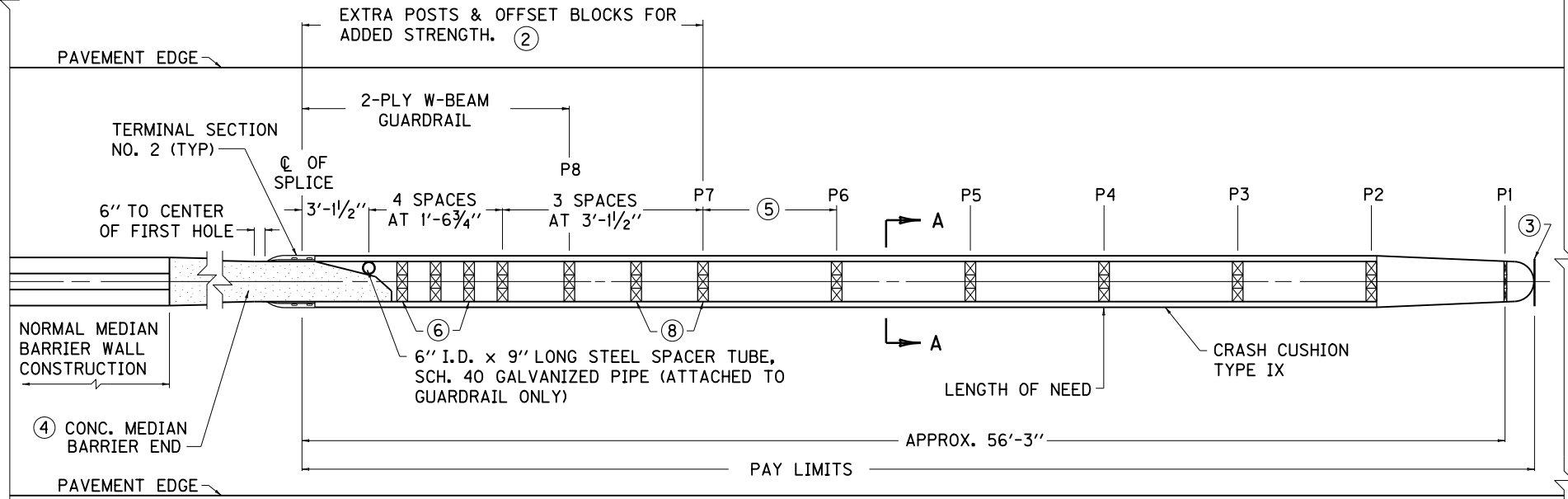


← TRAFFIC

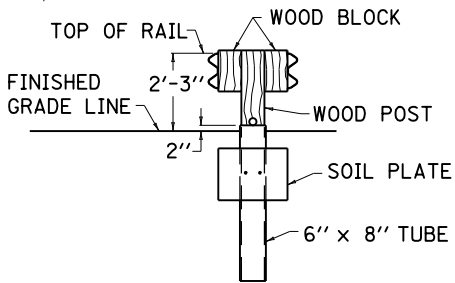


TRAFFIC → ⑪ PLAN VIEW

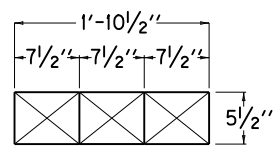
~ NOTES ~

1. CRASH CUSHION TYPE IX SHALL BE PAID FOR AT THE CONTRACT UNIT PRICE EACH, AND INCLUDES TERMINAL SECTIONS NO. 2, POST, RAIL ELEMENTS, SPACER TUBE, OBJECT MARKER TYPE I, HARDWARE, AND ALL OTHER INCIDENTALS NECESSARY TO COMPLETE THE INSTALLATION AS DETAILED.
- ② POSTS AND OFFSET BLOCKS MAY BE WOOD OR STEEL POSTS AND WOOD OFFSET BLOCKS.
- ③ OBJECT MARKER TYPE I, (SEE CURRENT MUTCD MANUAL FOR DETAILS) CENTER HORIZ. AND VERT.
- ④ SEE CUR. STD. DWG. [RBE-070](#) FOR DETAILS OF CRASH CUSHION BARRIER END.
- ⑤ POST P1 THROUGH P7 ARE SPACED 6'-3" ON CENTER.
- ⑥ GUARDRAIL NOT REQUIRED TO BE ATTACHED TO POST AT THESE LOCATIONS.
7. CRASH CUSHION TYPE IX IS A PATENTED (ONE SOURCE) PRODUCT MANUFACTURED BY TRINITY INDUSTRIES, INC. OF DALLAS TX.
- ⑧ BACK-UP PLATES REQUIRED AT THESE POSTS.
9. THE MANUFACTURER SHALL FURNISH TWO (2) SETS OF SHOP PLANS TO THE CONTRACTOR WITH EACH INSTALLATION.
10. FOR NON-PAVEMENT APPLICATIONS SEE ROADWAY PLANS FOR GRADING DETAILS
- ⑪ SEE [RBE-070](#) FOR ALTERNATE END DEPENDENT ON TRAFFIC DIRECTION.

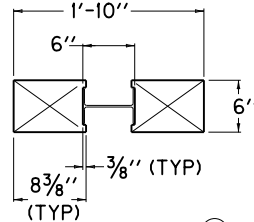
EACH



SECTION A-A



WOOD POST ②
WOOD OFFSET BLOCKS



STEEL POST ②
WOOD OFFSET BLOCKS

USE WITH CUR. STD. DWG. [RBE-070](#)

KENTUCKY	
DEPARTMENT OF HIGHWAYS	
CRASH CUSHION	
TYPE IX	
STANDARD DRAWING NO. RBE-200-06	
SUBMITTED <i>William P. Galbraith</i>	DATE 12-01-15
<small>DIRECTOR, DIVISION OF DESIGN</small>	
APPROVED <i>[Signature]</i>	DATE 12-01-15
<small>STATE HIGHWAY ENGINEER</small>	
<small>DATE</small>	