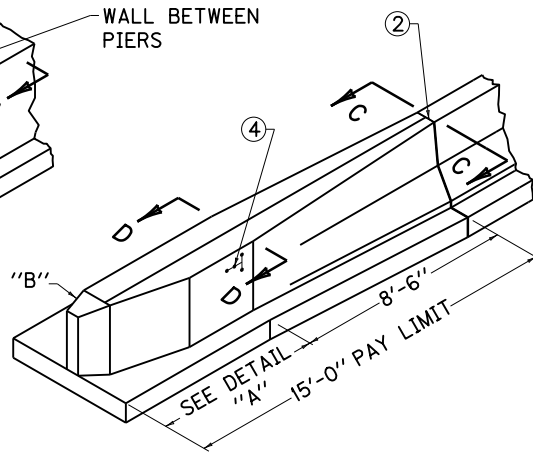


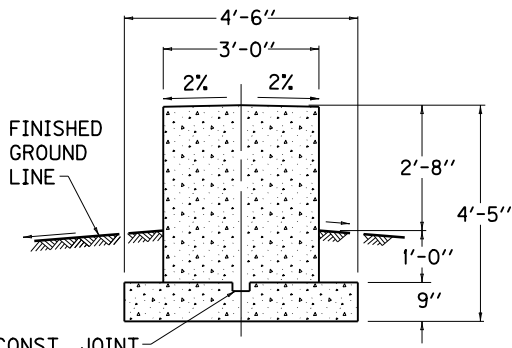
**BARRIER END FOR VERTICAL WALL BETWEEN BRIDGE PIERS**



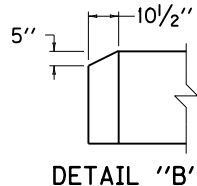
**BARRIER END FOR CONCRETE MEDIAN BARRIER**

**~ NOTES ~**

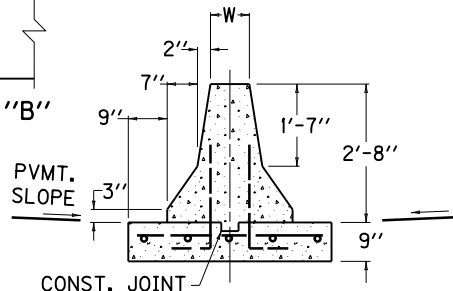
1. THE CONTRACT UNIT PRICE SHALL INCLUDE ALL MATERIALS, TOOLS, FORMS, LABOR, EXCAVATION, AND INCIDENTALS NECESSARY TO COMPLETE THE WORK IN ACCORDANCE WITH THIS DRAWING.
  2. 1/2" PREMOLD EXPANSION JOINT MATERIAL REQUIRED.
  3. STEEL REINFORCING BARS SHALL BE EVENLY SPACED AS SHOWN AND SHALL BE GRADE 40 MINIMUM.
  4. 4-BOLT INSERT ASSEMBLIES ARE REQUIRED. (SEE CURRENT STD. DWG. RBC-100 FOR INSERT DETAIL).
  5. CONCRETE QUANTITIES AT BRIDGE PIERS ARE BASED ON A BRIDGE PIER WIDTH OF 3'-0".
  6. WHEN THE CONCRETE MEDIAN BARRIER END IS PLACED AT A PIER WIDER THAN 3'-0" THE BARRIER END TRANSITION SHALL BE CONSTRUCTED ON A 12:1 MIN. TAPER AND ADDITIONAL CONCRETE AND STEEL QUANTITIES SHALL BE CALCULATED.
  7. ALTERNATE END DEPENDENT ON TRAFFIC DIRECTION.
- BID ITEMS AND UNIT TO BID  
 STEEL REINFORCEMENT  
 CONCRETE-CLASS A LB  
CUYD



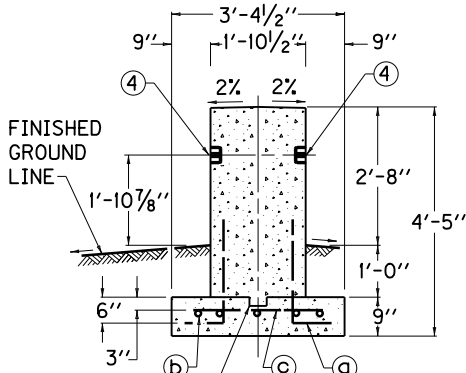
**SECTION A-A (WALL BETWEEN BRIDGE PIERS)**



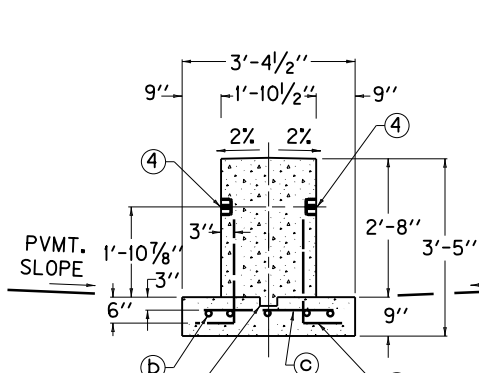
**DETAIL "B"**



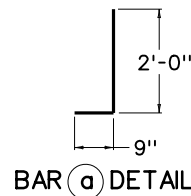
**SECTION C-C**



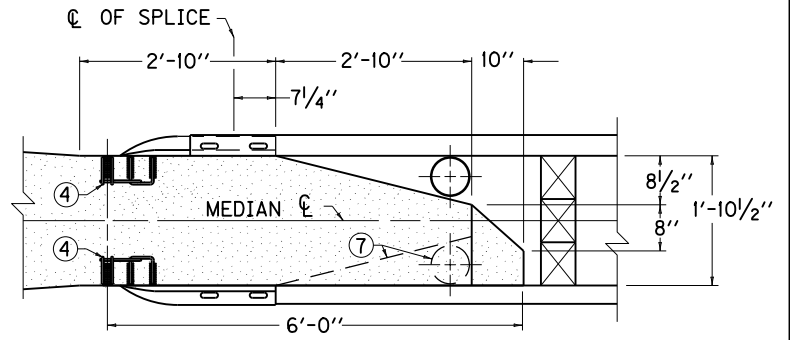
**SECTION B-B**



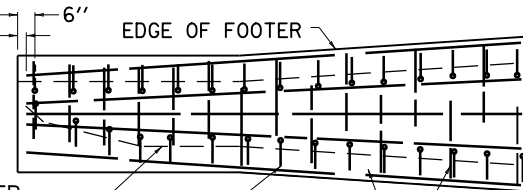
**SECTION D-D**



**BAR C DETAIL**



**DETAIL "A"**



**TYPICAL STEEL PLACEMENT**

CONDITION	NO. 5 STEEL REINF. BARS						POUNDS OF STEEL	CU. YDS. CLASS "A" CONC.
	Ⓐ BAR QTY.	Ⓐ BAR LGTH.	Ⓑ BAR QTY.	Ⓑ BAR LGTH.	Ⓒ BAR QTY.	Ⓒ BAR LGTH.		
BARRIER END AT BRIDGE PIERS								⑤
9" WALL	30	2'-9"	5	14'-4"	15	2'-3"	196	5.73
12" WALL								3.71
14" WALL								3.87
								3.96

**QUANTITIES FOR ONE CONCRETE MEDIAN BARRIER END**

USE WITH CUR. STD. DWG.  
 RBC-100, RBE-200

**KENTUCKY DEPARTMENT OF HIGHWAYS**

**CONCRETE MEDIAN BARRIER END FOR CRASH CUSHION TYPE IX**

STANDARD DRAWING NO. RBE-070-06

SUBMITTED: *William S. Gullett* 12-01-15  
 DIRECTOR, DIVISION OF DESIGN DATE  
 APPROVED: *[Signature]* 12-01-15  
 STATE HIGHWAY ENGINEER DATE