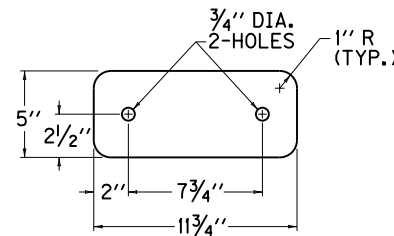
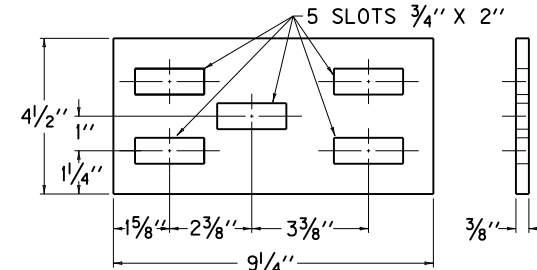
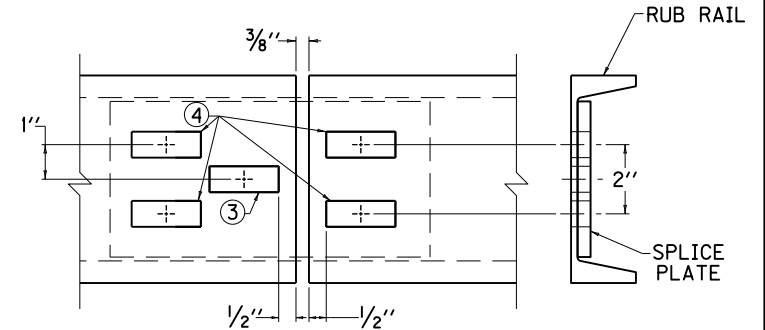
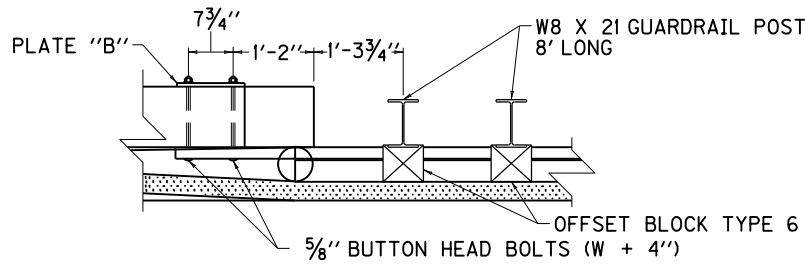
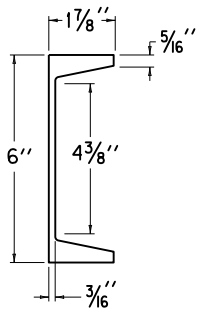


C6 X 8.2 RUB RAIL



USE WITH CUR. STD. DWG.
RBC-003, RBC-005

KENTUCKY
DEPARTMENT OF HIGHWAYS

GUARDRAIL CONNECTOR
TO BRIDGE END
TYPE A COMPONENTS

STANDARD DRAWING NO. RBC-002-03

SUBMITTED	<i>William P. Gullett</i>	DATE	12-01-15
APPROVED	<i>[Signature]</i>	DATE	12-01-15
	DIRECTOR, DIVISION OF DESIGN		
	STATE HIGHWAY ENGINEER		

- ~ NOTES ~
- RUB RAIL IS DETAILED AS ONE CONTINUOUS PIECE, A SPLICE IS PERMITTED PROVIDING IT IS DONE AT A GUARDRAIL POST. SEE "RUB RAIL SPLICE" DETAIL.
 - MATERIAL REQUIREMENTS
 - ALL HARDWARE SHALL BE GALVANIZED. (AASHTO M-232)
 - 5/8" STEEL PLATE "B" (AASHTO M-270)
 - 3/8" STEEL PLATE "RUB RAIL SPLICE PLATE" (AASHTO M-270)
 - 5/8" BUTTON HEAD BOLTS (AASHTO M-180)
 - 5/8" HEAVY HEX NUTS (5/8" THICK) (AASHTO M-291)
 - 5/8" FLAT WASHERS (1/8" THICK) (AASHTO M-293)
 - C6 X 8.2 RUB RAIL (AASHTO M160 AND M270)
 - GRADE 36, GALVANIZED ACCORDING TO AASHTO M111 AFTER PUNCHING AND CUTTING ARE COMPLETE.
 - THIS SLOT FOR BOLTING RAIL AND SPLICE PLATE TO GUARDRAIL POST WITH A 5/8" X 3/2" BUTTON HEAD BOLT AND HEX HEAD NUT.
 - THESE SLOTS FOR BOLTING RAIL TO SPLICE PLATE WITH A 5/8" X 1/2" BUTTON HEAD BOLT AND HEX HEAD NUT.