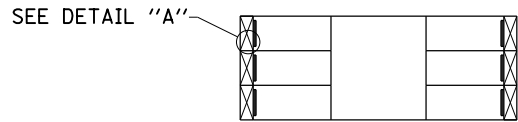
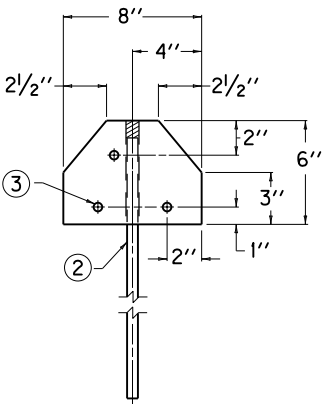


SKewed PARKING

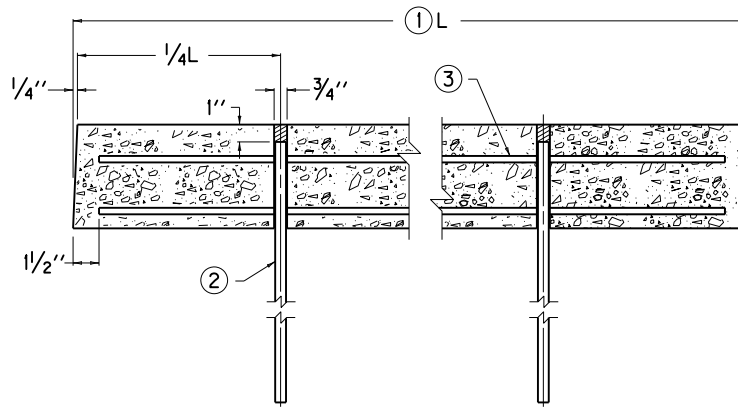


PERPENDICULAR PARKING

**TYPICAL VEHICLE STOP
INSTALLATION**



END VIEW

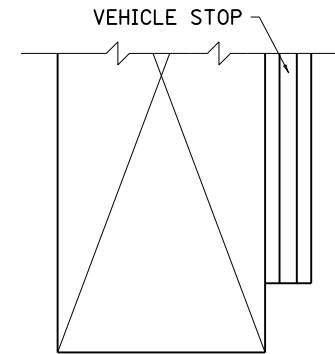


SECTIONAL ELEVATION

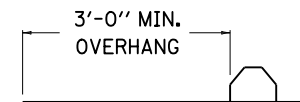
NOTES

THE UNIT PRICE BID PER LINEAR FOOT FOR "PRECAST VEHICLE STOP" SHALL INCLUDE ALL CLASS "A" CONCRETE, STEEL REINFORCEMENT, STEEL DOWELS, LABOR AND ALL INCIDENTALS NECESSARY FOR A COMPLETE INSTALLATION.

- ① THE PLANS SHALL SPECIFY THE LENGTHS OF THE INDEPENDENT UNITS. 2'-0", 4'-0", 6'-0" AND 8'-0" ARE STANDARD LENGTHS. 3'-0", 5'-0" AND 7'-0" LENGTHS MAY BE USED WHEN REQUIRED.
 - ② NO. 5 BARS - 1'-6" MIN. LENGTH. FILL VOID WITH BUTYL RUBBER CAULKING (COMMERCIAL GRADE) OR OTHER APPROVED MATERIAL.
 - ③ NO. 3 DEFORMED BARS (OR LARGER) 3 REQUIRED.
- THE MINIMUM REQUIREMENT FOR REINFORCING STEEL SHALL BE GRADE 40.
THE UNIT WEIGHS APPROXIMATELY 38 POUNDS PER FOOT.
OTHER TYPES OF STOPS MAY BE PERMITTED IF APPROVED IN WRITING BY THE ENGINEER.



PLAN VIEW



END ELEVATION

DETAIL "A"

KENTUCKY DEPARTMENT OF HIGHWAYS	
PRECAST VEHICLE STOP	
STANDARD DRAWING NO. RPM-130-03	
SUBMITTED <i>John B. Sackett</i> DIRECTOR DIVISION OF DESIGN	12-1-99 DATE
APPROVED <i>J. M. Howell</i> STATE HIGHWAY ENGINEER	12-1-99 DATE