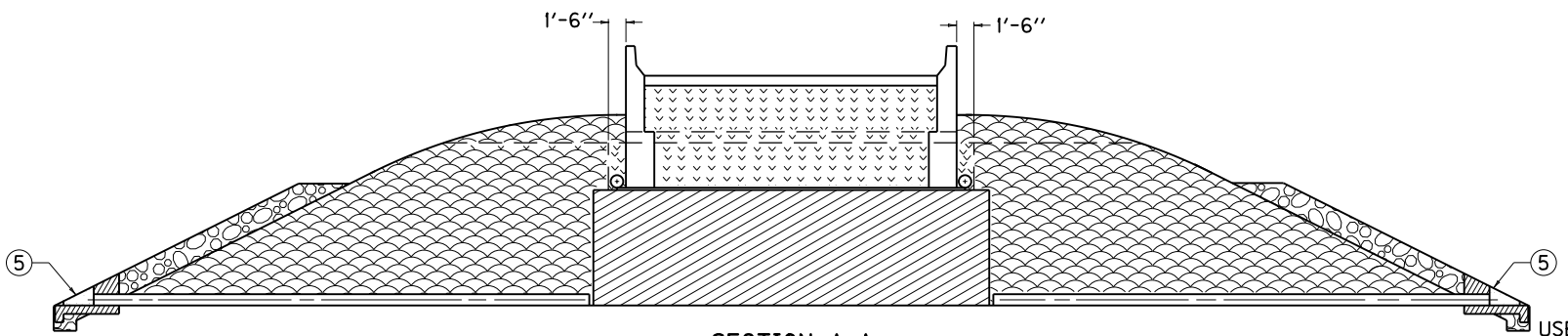


- LEGEND**
- ① SLOPE PROTECTION (SEE BRIDGE PLANS)
  - ② EMBANKMENT (GRANULAR, ROCK OR SOIL PER PLANS)
  - ③ GRANULAR PILE CORE OR COHESIVE PILE CORE
  - ④ STRUCTURE GRANULAR BACKFILL

PLAN VIEW



SECTION A-A

**NOTES:**

- THE PURPOSE OF THIS DRAWING AND CURRENT STANDARD DRAWING [RGX-105](#) IS TO DEFINE THE LIMITS OF THE FOUR MATERIALS SHOWN. FOR SIMPLICITY PURPOSES, AN END-BENT ON A ZERO DEGREE SKEW IS SHOWN. THE SAME PRINCIPLES WOULD APPLY FOR MORE VARIED STRUCTURES.
- ① SLOPE PROTECTION REQUIRED WHEN AND AS NOTED ON THE BRIDGE PLANS.
  - ② GRANULAR OR ROCK EMBANKMENT REQUIRED WHEN AND AS NOTED ON THE ROADWAY PLANS.
  - ③ GRANULAR PILE CORE REQUIRED WITH GRANULAR OR ROCK EMBANKMENT. COHESIVE PILE CORE REQUIRED WITH DRILLED SHAFTS AND PRE-DRILLED PILES.
  - ④ STRUCTURE GRANULAR BACKFILL REQUIRED AT ALL TIMES.
  - ⑤ 8" PERFORATED UNDERDRAIN PIPE. FOR HEADWALL CONSTRUCTION SEE CURRENT STD. DWG [RDP-010](#).

USE WITH CUR. STD. DWG. [RGX-105](#)

<b>KENTUCKY</b>	
<b>DEPARTMENT OF HIGHWAYS</b>	
<b>TREATMENT OF EMBANKMENTS AT END-BENTS</b>	
STANDARD DRAWING NO. <a href="#">RGX-100-05</a>	
SUBMITTED: <i>David Kott</i>	11-21-07
DIRECTOR DIVISION OF DESIGN	DATE
APPROVED: <i>Matthew M. Matthews</i>	11-21-07
STATE HIGHWAY ENGINEER	DATE