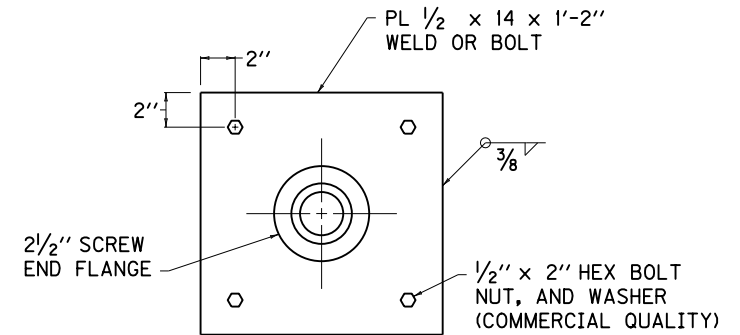
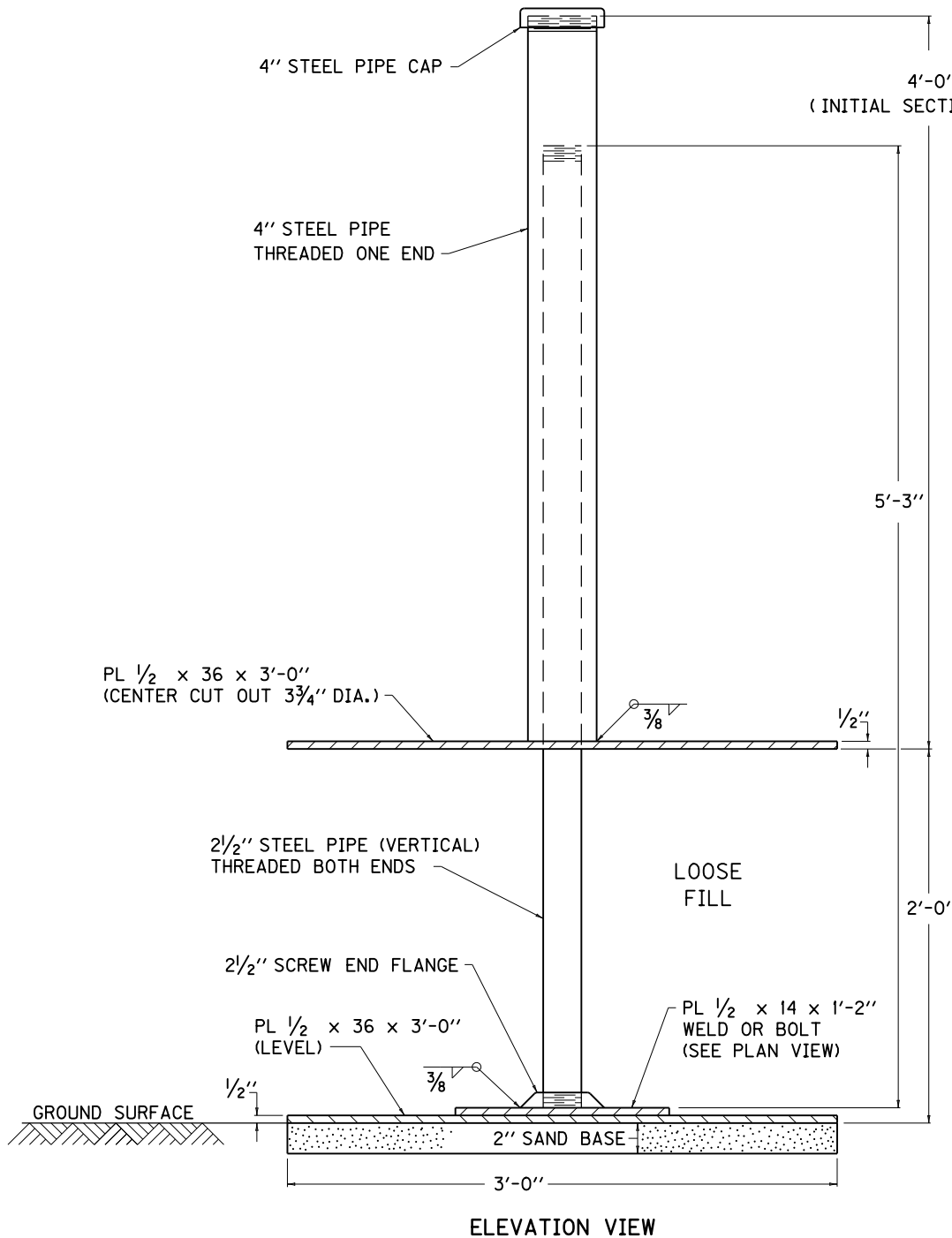


NOTES

ADDITIONAL PIPE SHALL BE FURNISHED IN 5'-3" SECTIONS (DUE TO COMMERCIAL PIPE LENGTHS OF 21'-0") THREADED ON BOTH ENDS, PAID FOR PER LINEAR FOOT AND SHALL MEET THE REQUIREMENTS OF SECTION 810.05.03 OF THE CURRENT STANDARD SPECIFICATIONS.

PIPE SIZES ARE GIVEN IN NOMINAL DIAMETERS.



PLAN VIEW

KENTUCKY DEPARTMENT OF HIGHWAYS		
SETTLEMENT PLATFORM		
STANDARD DRAWING NO. RGX-015-02		
SUBMITTED: <i>John B. Sackett</i>	12-1-99	DATE
<small>DIRECTOR, DIVISION OF DESIGN</small>		
APPROVED: <i>J. M. Howell</i>	12-1-99	DATE
<small>STATE HIGHWAY ENGINEER</small>		