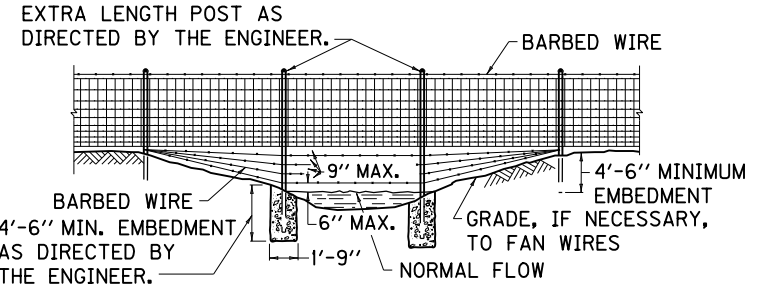
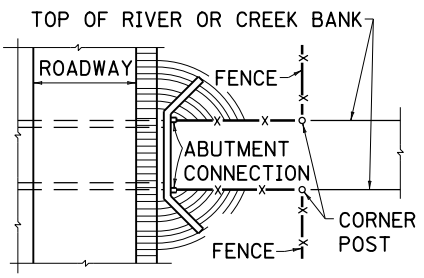


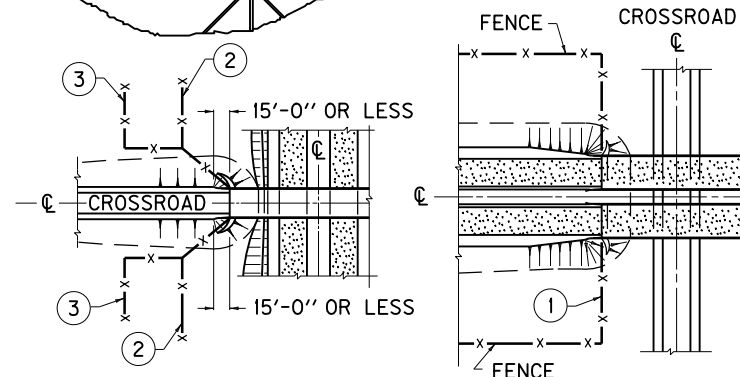
**TYPE A CROSSING**



**TYPE B CROSSING**



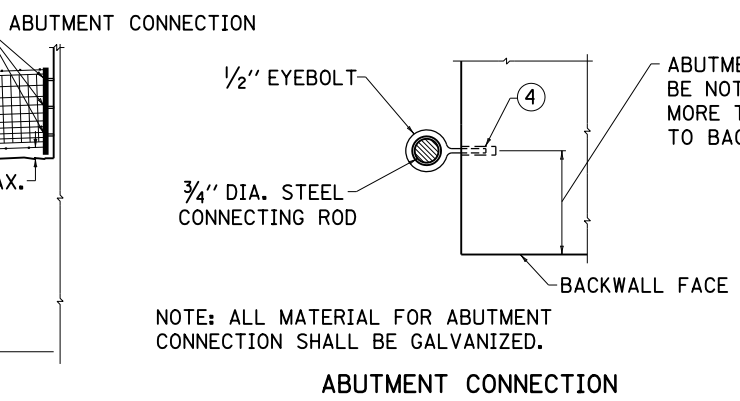
**TYPICAL FENCE INSTALLATION FOR BOX CULVERT USED AS CATTLE CROSSING**



**HIGHWAY UNDER CROSSROAD**  
**HIGHWAY OVER CROSSROAD**

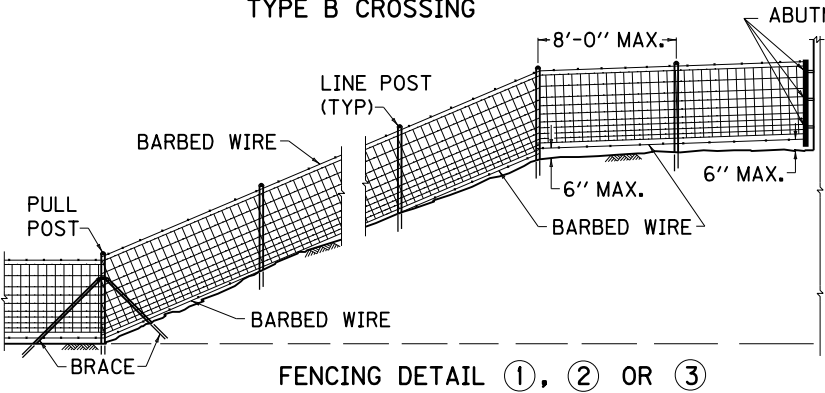
**NOTES**

- DETAIL ① NORMAL WAY OF HANDLING FENCE WHEN THE HIGHWAY IS OVER THE CROSSROAD IS AS SHOWN.
- DETAIL ② WHEN HIGHWAY RIGHT-OF-WAY IS WITHIN 15'-0" OR LESS OF THE FACE OF BACKWALL PROJECTED, ANGLE FENCE INTO ABUTMENT FROM TOE OF SLOPE AS SHOWN.
- DETAIL ③ WHEN HIGHWAY RIGHT-OF-WAY IS GREATER THAN 15'-0" FROM THE FACE OF BACKWALL PROJECTED, ANGLE FENCE PARALLEL TO THE CENTERLINE OF CROSSROAD AND INTERSECT DETAIL ② AS SHOWN.
- ④ 1/2"x2" SELF-DRILL ANCHOR AND EYEBOLT ASSEMBLY.



NOTE: ALL MATERIAL FOR ABUTMENT CONNECTION SHALL BE GALVANIZED.

**ABUTMENT CONNECTION**



**FENCING DETAIL ①, ② OR ③**

<b>KENTUCKY DEPARTMENT OF HIGHWAYS</b>	
<b>FENCING DETAILS</b>	
STANDARD DRAWING NO. RFW-001-05	
SUBMITTED: <i>[Signature]</i>	12-2-11
DIRECTOR, DIVISION OF DESIGN	DATE
APPROVED: <i>[Signature]</i>	12-2-11
STATE HIGHWAY ENGINEER	DATE