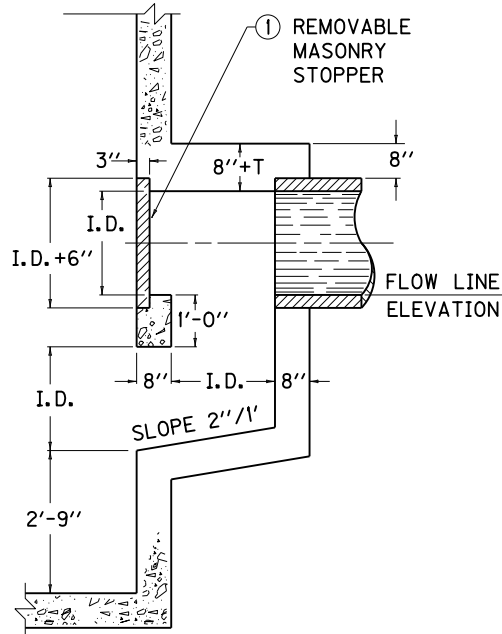
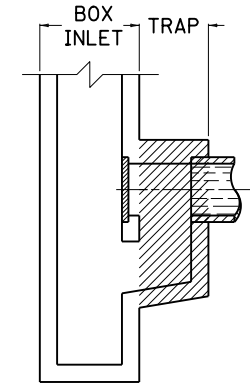
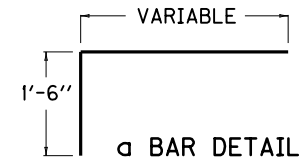
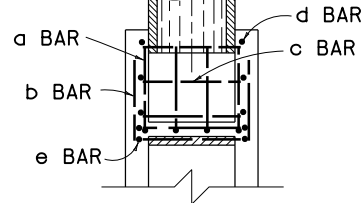


FRONT ELEVATION



RIGHT SECTIONAL ELEVATION

PIPE SIZE	NO. 5 REINFORCEMENT BARS										LBS.	CLASS A CONC. CU. YD.
	QUANTITY - LENGTH AND WEIGHT											
	QTY.	a	QTY.	b	QTY.	c	QTY.	d	QTY.	e		
12"	6	2'-10"	8	1'-4"	11	1'-8"	4	3'-4"	4	6'-4"	88	0.52
15"	6	3'-1"	10	1'-7"	12	2'-0"	4	3'-10"	4	6'-10"	105	0.69
18"	8	3'-4"	10	1'-10"	13	2'-3"	6	4'-4"	4	7'-4"	135	0.87
21"	8	3'-7"	12	2'-1"	14	2'-7"	6	4'-10"	4	7'-10"	157	1.09
24"	8	3'-10"	12	2'-4"	15	2'-10"	6	5'-4"	4	8'-4"	174	1.32
30"	10	4'-4"	14	2'-10"	17	3'-5"	8	6'-4"	4	9'-4"	239	1.87
36"	10	4'-10"	16	3'-4"	19	4'-0"	8	7'-4"	4	10'-4"	290	2.52
42"	12	5'-4"	18	3'-10"	21	4'-7"	10	8'-4"	4	11'-4"	373	3.28
48"	12	5'-10"	20	4'-4"	23	5'-2"	10	9'-4"	4	12'-4"	436	4.15



TYPICAL TRAPPED BOX INLET

NOTES

QUANTITIES SHOWN FOR STEEL AND CONCRETE ARE FOR INFORMATIONAL PURPOSES ONLY, AND ARE INCLUDED IN THE BID ITEM. FOR EXAMPLE: "CURB BOX INLET TYPE AA TRAPPED". STEEL BARS SPACED APPROXIMATELY 12" O.C. THE MINIMUM REQUIREMENT FOR REINFORCING STEEL SHALL BE GRADE 40. NO CONSTRUCTION JOINTS PERMITTED BELOW FLOW LINE ELEVATION.

THIS INLET TRAP MAY BE APPLIED TO ANY BOX INLET WITH A FLAT VERTICAL FACE.

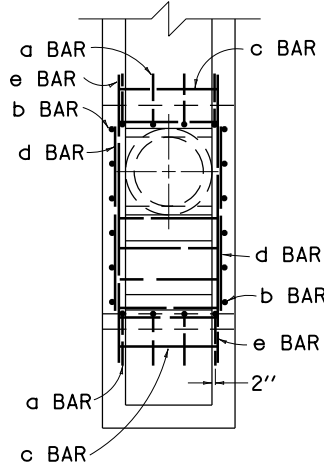
CAST IRON OR OTHER TYPES OF STOPPERS WILL BE PERMITTED IF APPROVED BY THE ENGINEER.

T = PIPE THICKNESS.

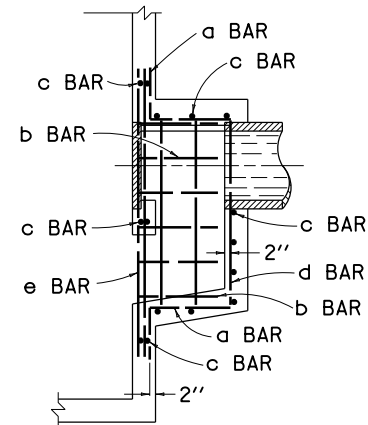
I.D. = INSIDE DIAMETER OF PIPE.

O.D. = OUTSIDE DIAMETER OF PIPE.

DRAWING IS FOR TRAP PORTION OF INLET ONLY AND MUST BE CONSTRUCTED AS AN INTEGRAL PART OF THE BOX INLET.



STEEL PATTERN



KENTUCKY DEPARTMENT OF HIGHWAYS

TRAP FOR BOX INLETS

STANDARD DRAWING NO. RDX-020-04

SUBMITTED: *John B. Sackett* DIRECTOR DIVISION OF DESIGN 12-1-99 DATE  
 APPROVED: *J. M. Powell* STATE HIGHWAY ENGINEER 12-1-99 DATE