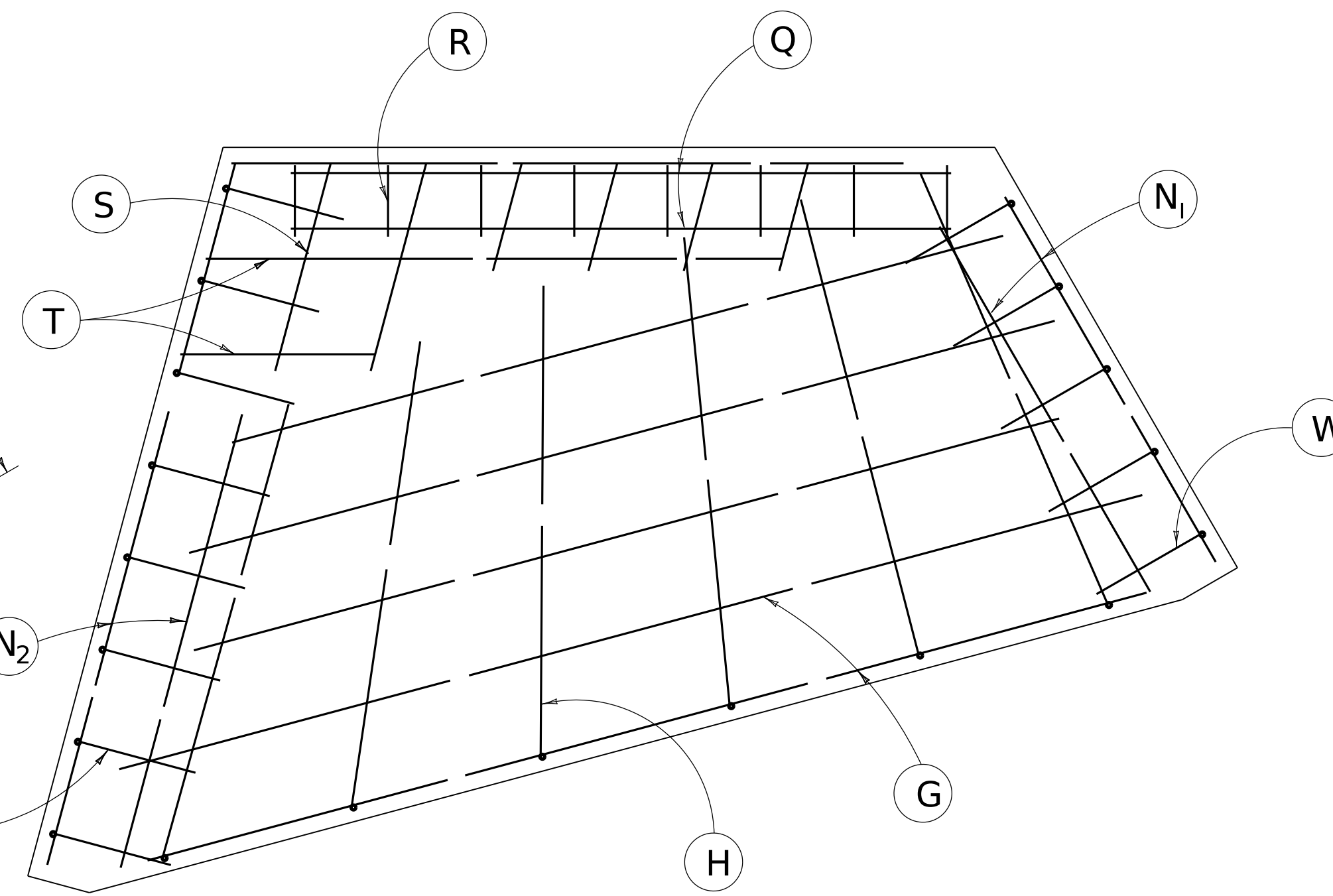
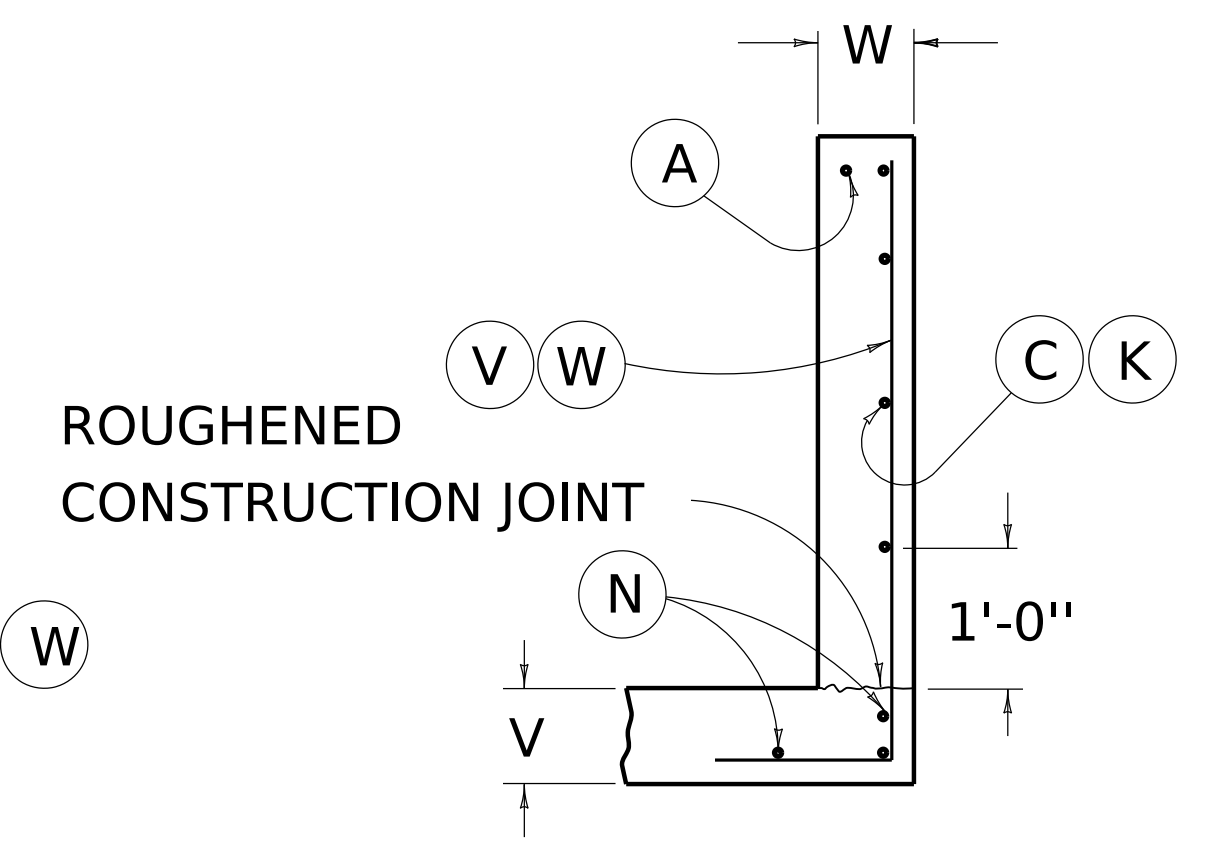


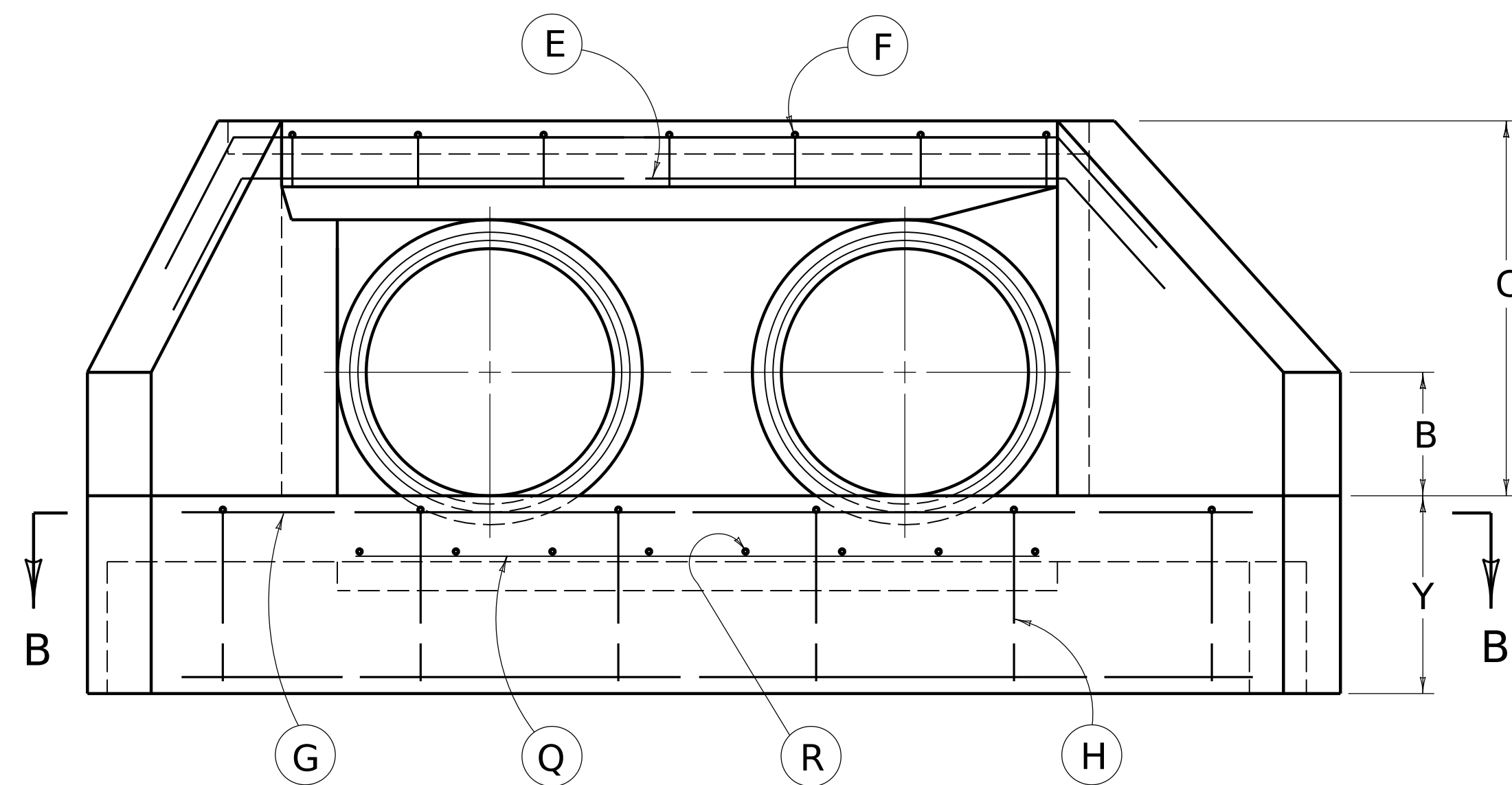
PLAN VIEW



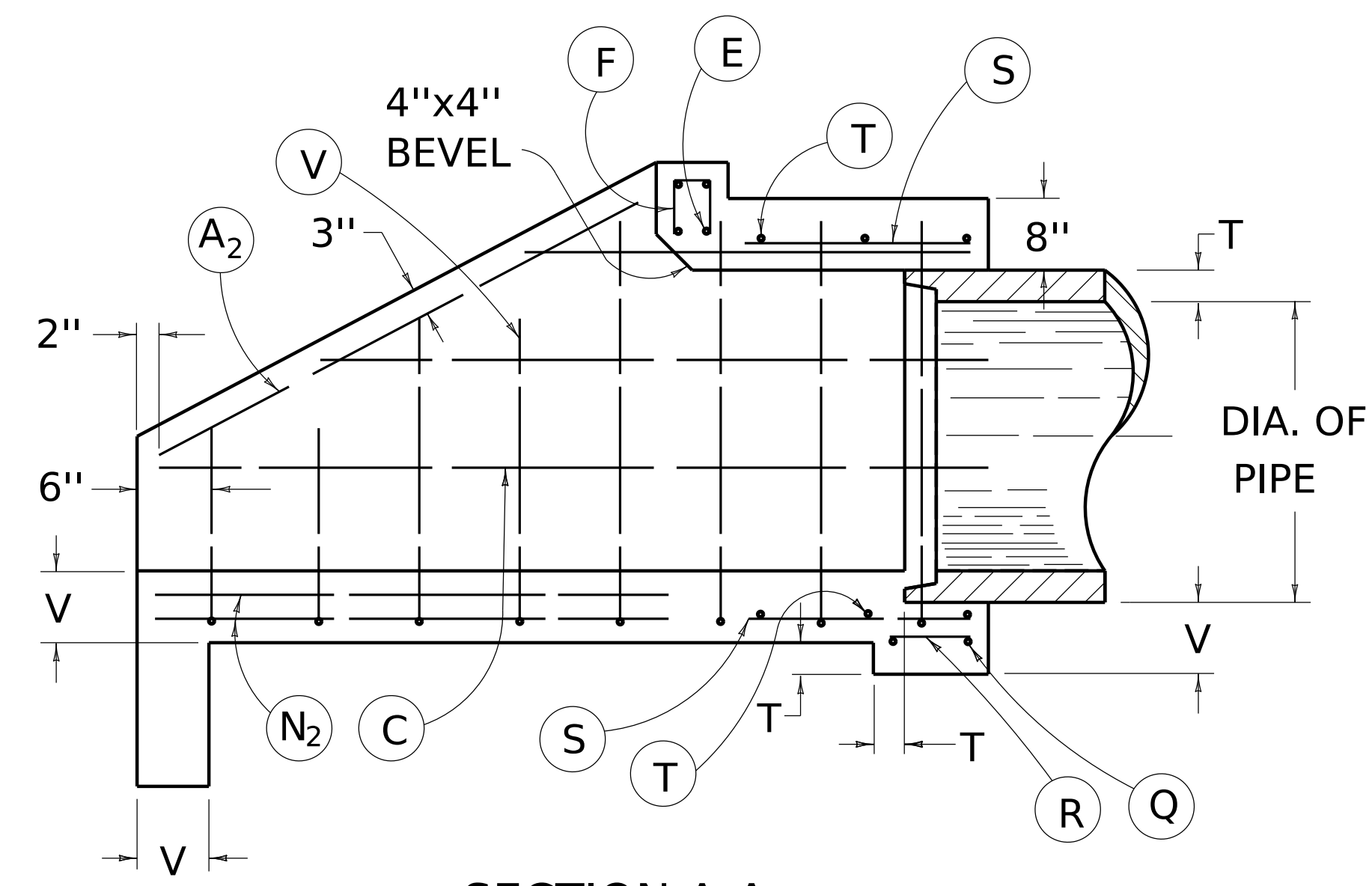
SECTION B-B



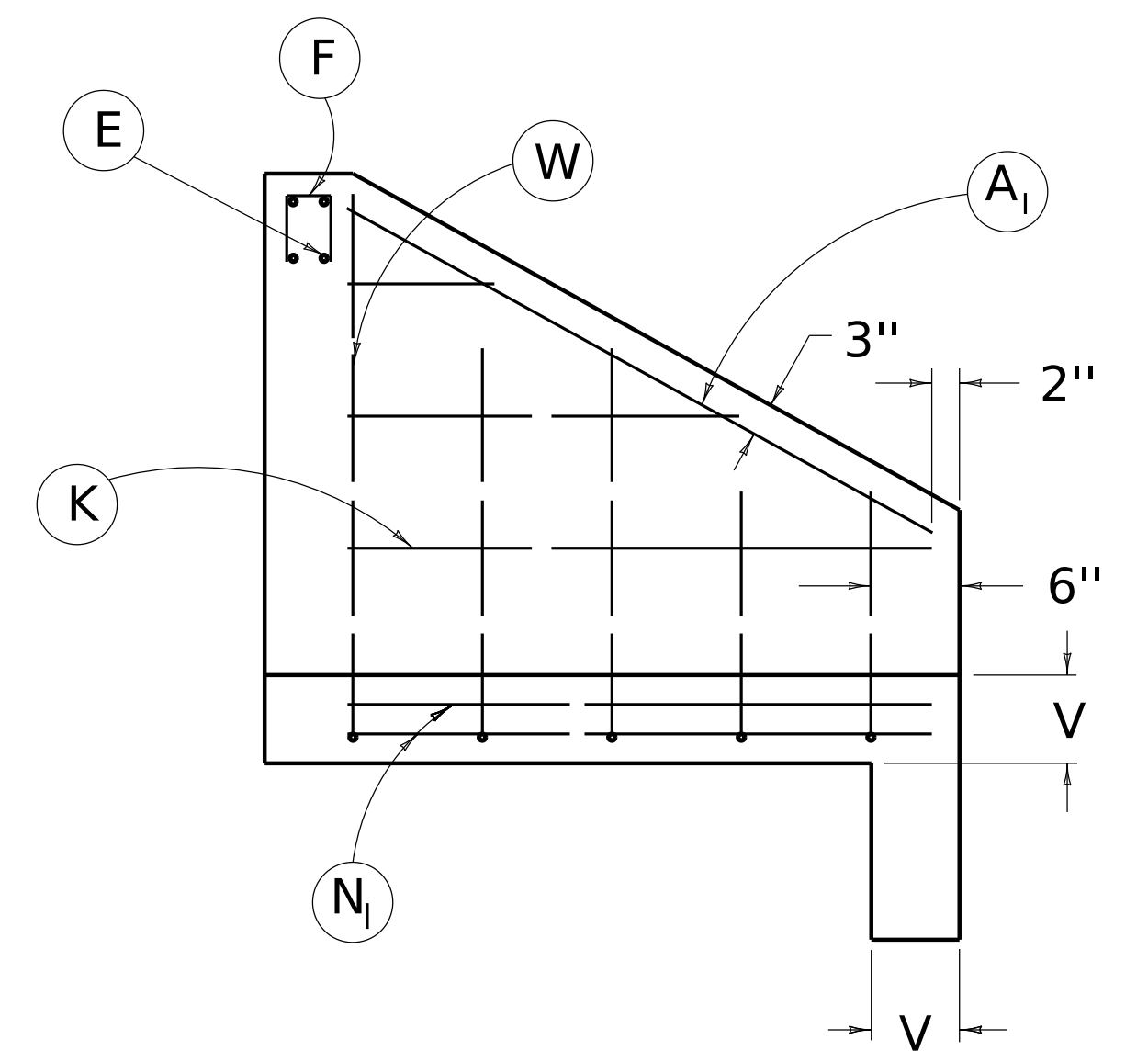
WING SECTION



FRONT ELEVATION



SECTION A-A



SHORT WING SECTION

~ NOTES ~

1. SEE CURRENT STANDARD DRAWINGS RDH-532, 534 AND 536 FOR DIMENSIONS, QUANTITIES AND BILL OF REINFORCEMENT.
2. DIMENSIONS FROM FACE OF CONCRETE TO STEEL SHALL BE 2" CLEAR DISTANCE.
3. ENCIRCLED LETTERS, ○, INDICATE STEEL BAR LOCATIONS.
4. BARS ○C, ○G, ○V ARE SPACED 1'-0" O.C. ALL OTHER BARS SHALL BE EVENLY SPACED.
5. BARS ○V AND ○W ARE PLACED IN ORDER OF INCREASING LENGTHS, BEGINNING AT THE END OF EACH WING.
6. BARS ○C AND ○K ARE PLACED IN ORDER OF INCREASING LENGTHS, BEGINNING AT THE TOP OF EACH WING.
7. HEADWALLS LOCATED AT EDGE OF SHOULDER SHALL BE PARALLEL TO CENTERLINE OF THE ROAD.
8. APRON BETWEEN WINGS SHALL BE SLOPED IN DIRECTION OF FLOW EQUAL TO SLOPE OF PIPE. FRONT FACE OF HEADWALL AND ENDS OF WINGS SHALL REMAIN VERTICAL.

(LAYOUT AND STEEL PATTERN)

KENTUCKY  
DEPARTMENT OF HIGHWAYS

DOUBLE PIPE  
CULVERT HEADWALLS  
15° -30° & 45° SKEW

STANDARD DRAWING NO. RDH-530-04

SUBMITTED \_\_\_\_\_ DIRECTOR DIVISION OF DESIGN \_\_\_\_\_ DATE \_\_\_\_\_

APPROVED \_\_\_\_\_ STATE HIGHWAY ENGINEER \_\_\_\_\_ DATE \_\_\_\_\_