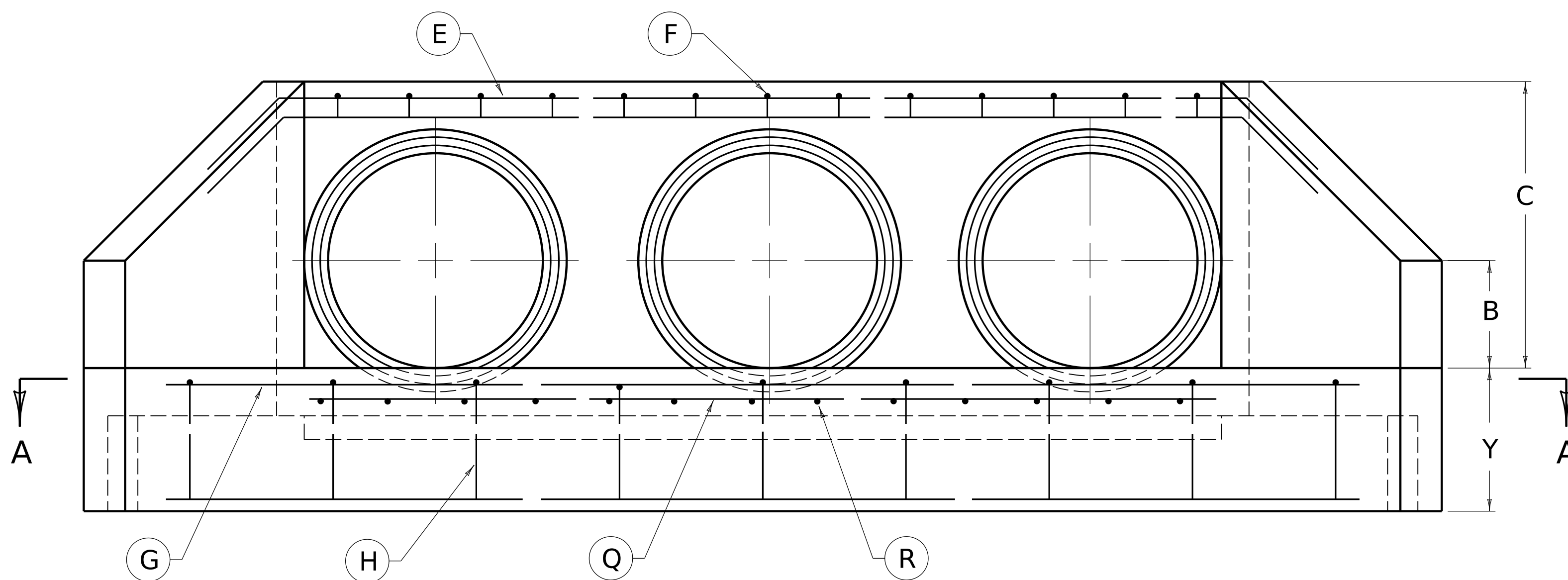
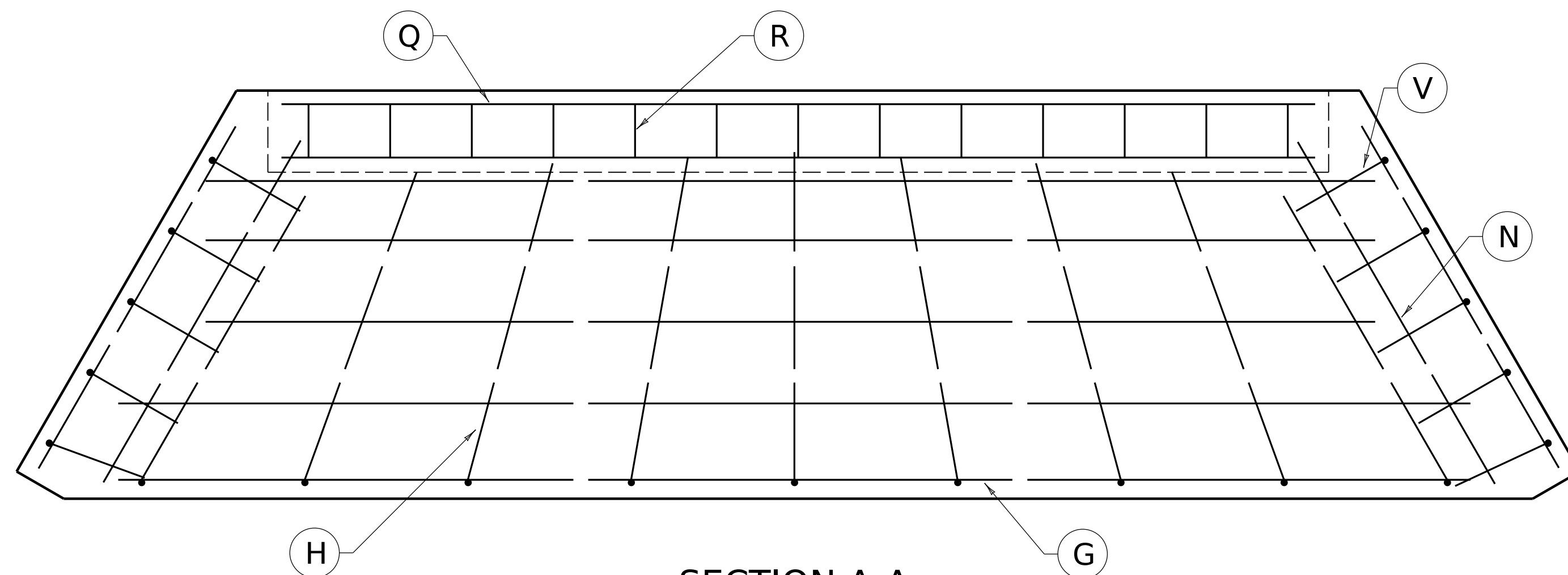


PLAN VIEW

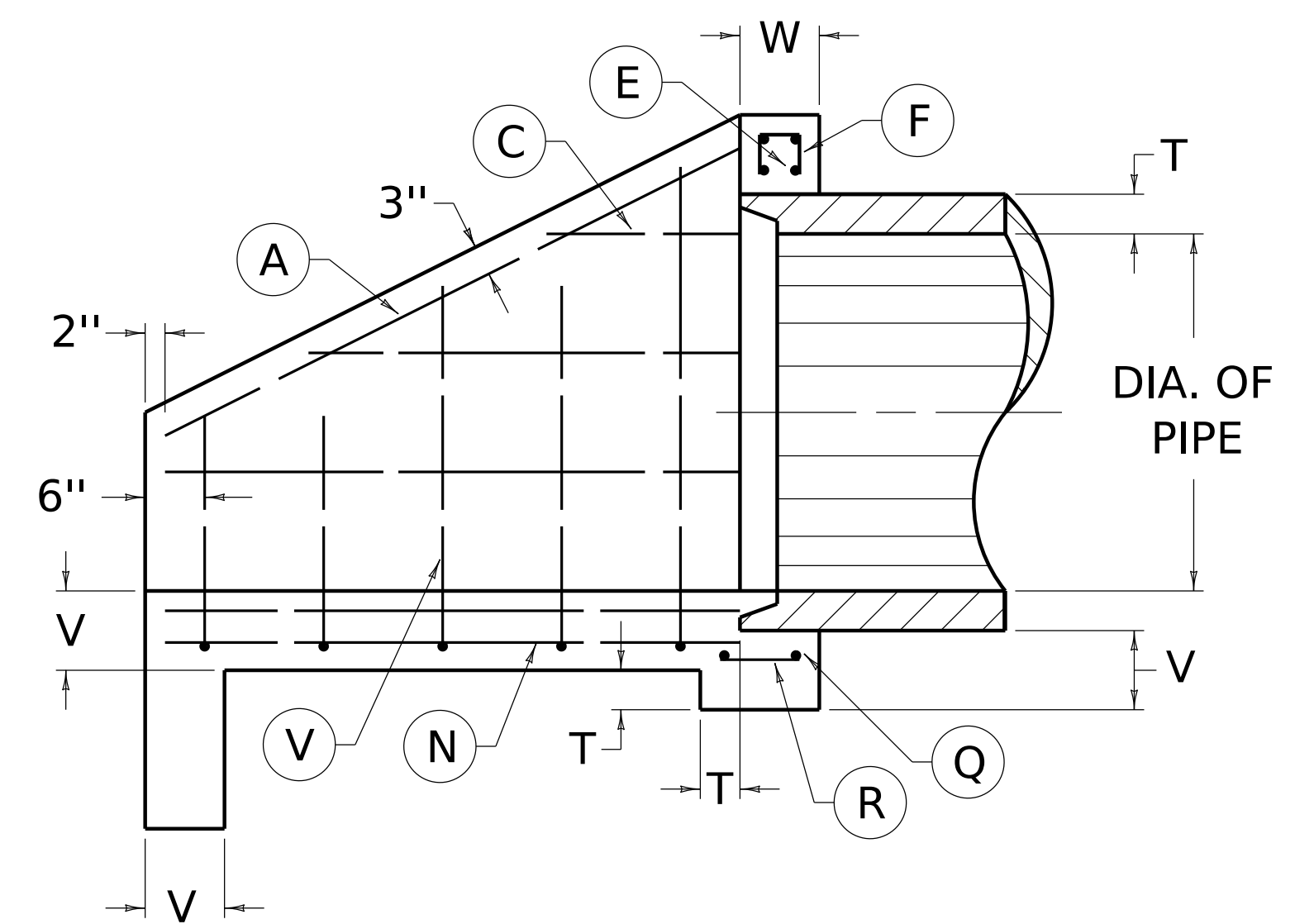


FRONT ELEVATION

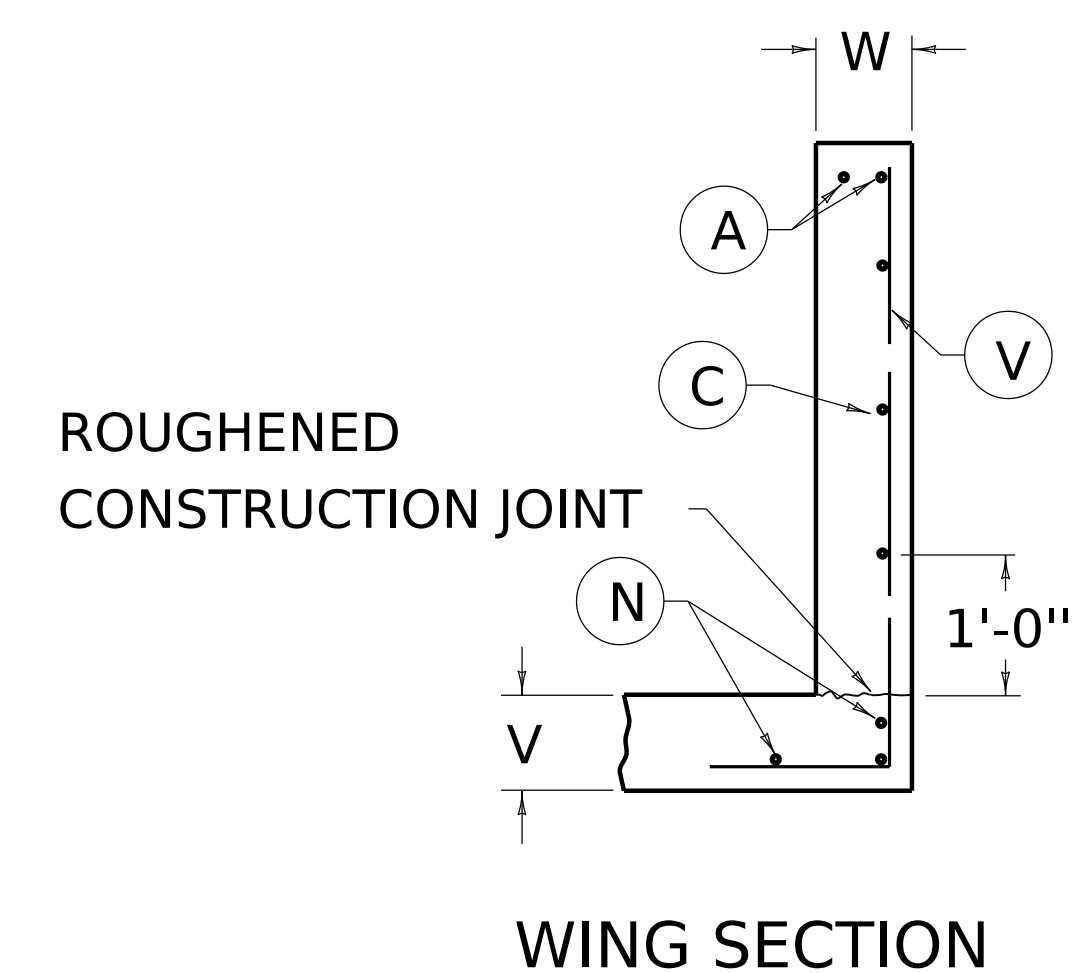


SECTION A-A

- ~ NOTES ~
1. SEE CURRENT STANDARD DRAWING RDH-522 AND 524 FOR DIMENSIONS, QUANTITIES AND BILL OF REINFORCEMENT.
 2. ENCIRCLED LETTERS, ○, INDICATE STEEL BAR LOCATIONS.
 3. BARS ○, ○, ○ ARE SPACED 1'-0" O.C. ALL OTHER BARS SHALL BE EVENLY SPACED.
 4. BARS ○ ARE PLACED IN ORDER OF INCREASING LENGTHS, BEGINNING AT THE END OF EACH WING.
 5. BARS ○ ARE PLACED IN ORDER OF INCREASING LENGTHS, BEGINNING AT THE TOP OF EACH WING.
 6. HEADWALLS LOCATED AT EDGE OF SHOULDER SHALL BE PARALLEL TO CENTERLINE OF THE ROAD.
 7. APRON BETWEEN WINGS SHALL BE SLOPED IN DIRECTION OF FLOW EQUAL TO SLOPE OF PIPE. FRONT FACE OF HEADWALL AND ENDS OF WINGS SHALL REMAIN VERTICAL.
 8. DIMENSIONS FROM FACE OF CONCRETE TO STEEL SHALL BE 2" CLEAR DISTANCE.



SECTION B-B



WING SECTION

KENTUCKY DEPARTMENT OF HIGHWAYS	
<i>TRIPLE PIPE CULVERT HEADWALLS 0° SKEW</i>	
STANDARD DRAWING NO. RDH-520-05	
SUBMITTED _____	DIRECTOR DIVISION OF DESIGN _____ DATE _____
APPROVED _____	STATE HIGHWAY ENGINEER _____ DATE _____